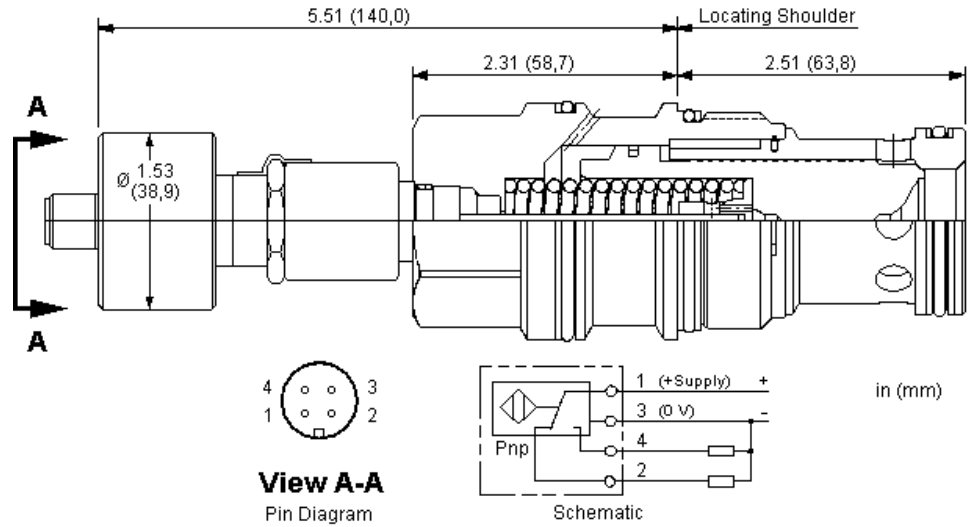


CONFIGURATION

Cracking Pressure
Seal Material



These unbalanced, pilot-to-close logic valves are 2-way switching elements that are spring biased closed. Pressure at either work port 1 or 2 will oppose the spring and tend to open the valve while pressure at port 3 will tend to close it. The force generated by the pressure at port 3, plus the spring force, must be greater than the sum of the forces generated by the pressures at ports 1 and 2 for the valve to remain closed. This valve incorporates a position switch to provide confirmation that the valve is closed.

TECHNICAL DATA

Maximum Operating Pressure	5000 psi
Area Ratio, A3 to A1	1.8:1
Area Ratio, A3 to A2	2.25:1
Maximum Valve Leakage at 110 SUS (24 cSt)	1 drops/min.
Pilot Passage into Valve	.09 in.
Pilot Volume Displacement	.42 in ³
Transition leakage at 110 SUS (24 cSt)	2 in ³ /min.@1000 psi
Seal kit - Cartridge	Buna: 990-019-007
Seal kit - Cartridge	Polyurethane: 990-019-002
Seal kit - Cartridge	Viton: 990-019-006

CONFIGURATION OPTIONS

Model Code Example: **LOJ CZN**

CRACKING PRESSURE

(D) SEAL MATERIAL

(V)

D 50 psi (3,5 bar)

V Viton

N Buna-N