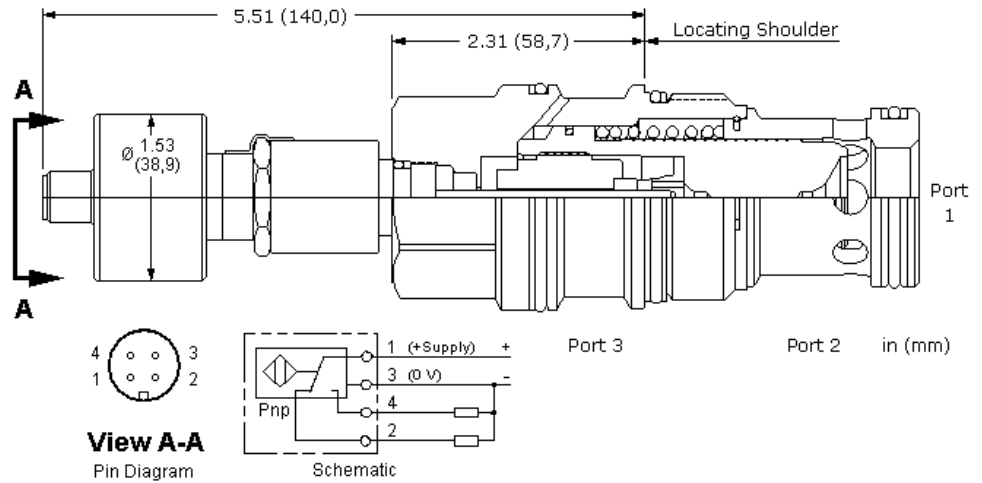


**CONFIGURATION**

Cracking Pressure  
Seal Material



These unbalanced, pilot-to-close logic valves are 2-way switching elements that are spring biased open. Pressure at either work port 1 or 2 will tend to keep the valve open while pressure at port 3 will tend to close it. The force generated at port 3 must be greater than the sum of the forces acting at port 1 and port 2 plus the spring force for the valve to close. NOTE: The pilot area (port 3) is 1.8 times the area at port 1 and 2.25 times the area at port 2. This valve incorporates a position switch to provide confirmation that the valve is spring biased to the fully open position.

**TECHNICAL DATA**

Maximum Operating Pressure	5000 psi
Area Ratio, A3 to A1	1.8:1
Area Ratio, A3 to A2	2.25:1
Maximum Valve Leakage at 110 SUS (24 cSt)	1 drops/min.
Pilot Passage into Valve	.09 in.
Pilot Volume Displacement	.42 in <sup>3</sup>
Seal kit - Cartridge	Buna: 990-019-007
Seal kit - Cartridge	Polyurethane: 990-019-002
Seal kit - Cartridge	Viton: 990-019-006

**CONFIGURATION OPTIONS**

Model Code Example: **LOJOZN**

CRACKING PRESSURE

(D)

SEAL MATERIAL

(V)

**D** 50 psi (3,5 bar)

**V** Viton

**N** Buna-N