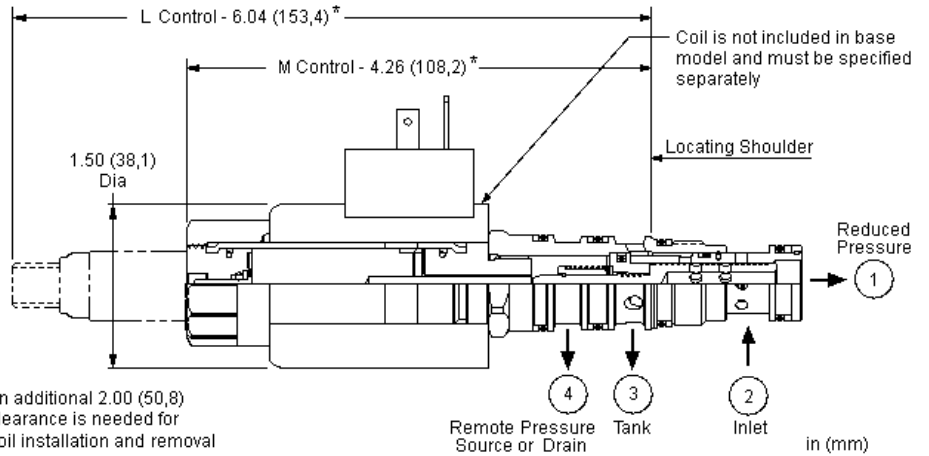


CONFIGURATION

L



2 1 1 3 2

TECHNICAL DATA

	350 bar
110 SUS (24 cSt)	330 cc/min.
-	5
	15 mm
	9 - 10 Nm

: • Sun

CONFIGURATION OPTIONS

Model Code Example: PSDLLMDN

(L)	(S)	(V)	(212)
L	S 10 - 100 psi (0,7 - 7 bar)	V	212 DIN 43650 A 12 VDC
M ()	B 100 - 1125 psi (7 - 77,5 bar)	N	224 DIN 43650 A 24 VDC
	D 50 - 485 psi (3,5 - 33,5 bar)		224NX01 DIN 43650 A 24 VDC (TVS) XMD-01
	E 25 - 250 psi (1,7 - 18 bar)		224NX02 DIN 43650 A 24 VDC (TVS) XMD-02
			912 Deutsch DT04-2P 12 VDC
			912NX01 Deutsch DT04-2P 12 VDC (TVS) XMD-01
			912NX02 Deutsch DT04-2P 12 VDC (TVS) XMD-02
			924 Deutsch DT04-2P 24 VDC
			924NX01 Deutsch DT04-2P 24 VDC (TVS) XMD-01
			924NX02 Deutsch DT04-2P 24 VDC (TVS) XMD-02