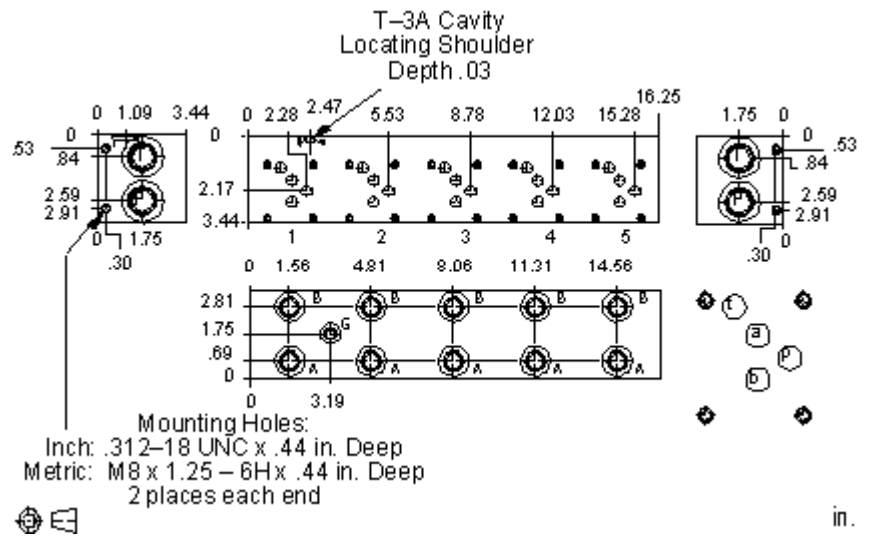




## CONFIGURATION

Modifier



- NOTES:**
- For mounting bracket information, see catalog or drawing 991-021-\*\*\*
  - **Important:** Carefully consider the maximum system pressure. The pressure rating of the manifold is dependent on the manifold material, with the port type/size a secondary consideration. Manifolds constructed of aluminum are not rated for pressures higher than 3000 psi (210 bar), regardless of the port type/size specified.

MODIFIER

(/S3)

**/S3** 65-45-12 Ductile Iron, Buna-N, Trivalent Clear Zinc with Top Sealer

6061-T651 Aluminum, Buna-N

**/11** 6061-T651 Aluminum, Buna-N, Clear Anodize - Per MIL SPEC 8625F Type II, Class I

**/10** 6061-T651 Aluminum, Buna-N, Black Anodize - Per MIL SPEC 8625F Type II, Class II

**/S** 65-45-12 Ductile Iron, Buna-N, Dewatering Oil

**/S4** 65-45-12 Ductile Iron, Buna-N, Chem. Black