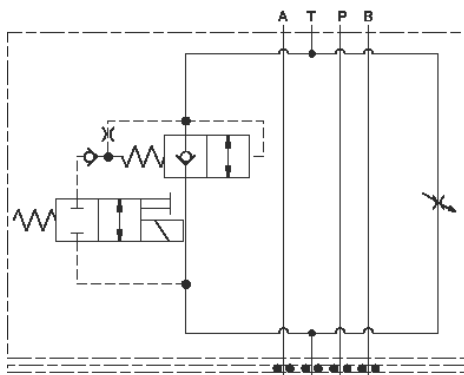
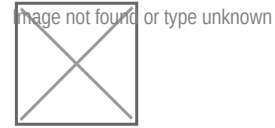


Meter in P



Meter out T



This assembly consists of a needle valve which is a fully-adjustable orifice used to regulate flow. It is infinitely adjustable from fully closed up to the maximum orifice diameter. It is not pressure-compensated. It may be used as flow controls or as shutoff valves. The rapid or feed rate is selected by a solenoid operated (normally open or closed) 2-way, 2-position valve.

TECHNICAL DATA NOTE: DATA MAY VARY BY CONFIGURATION. SEE CONFIGURATION SECTION.

| | |
|---------------------------------|---------------------------|
| Body Type | Sandwich |
| Interface | ISO 03 |
| Capacity | 15 gpm |
| Body Features | Meter in P or Meter out T |
| Control Flow Range | 0 - 7 gpm |
| Seal Plate Included (see notes) | Yes |
| Stack Height | 1.75 in. |

- NOTES:**
- Customer to install locating pin (included) for functional orientation desired.
 - Stack height value in technical data table includes seal retainer plate.
 - For detailed information regarding the cartridges contained in this assembly, click on the models codes shown in the Included Components tab.
 - **Important:** Carefully consider the maximum system pressure. The pressure rating of the manifold is dependent on the manifold material, with the port type/size a secondary consideration. Manifolds constructed of aluminum are not rated for pressures higher than 3000 psi (210 bar), regardless of the port type/size specified.

OPTION SELECTION EXAMPLE: X2CNLCNFA224

| CONTROL | (L) MAXIMUM ORIFICE DIAMETER | (C) SEAL MATERIAL | (N) |
|---|------------------------------|-------------------|-----|
| L Standard Screw Adjustment | C .19 in. (4,8 mm) | N Buna-N | |
| H Calibrated Handknob with Detent Lock | D .09 in. (2,3 mm) | V Viton | |
| K Handknob | | | |

INCLUDED COMPONENTS

| Part | Description | Quantity |
|--------------|---------------------|----------|
| 500-001-012* | O-Ring | 4 |
| 700-002* | Seal Plate | 1 |
| 811-001-006* | Pin | 1 |
| DFCA8DN | Cartridge | 1 |
| DTAFMHN224 | Cartridge | 1 |
| NFCCLCN | Cartridge - Primary | 1 |

TECHNICAL FEATURES

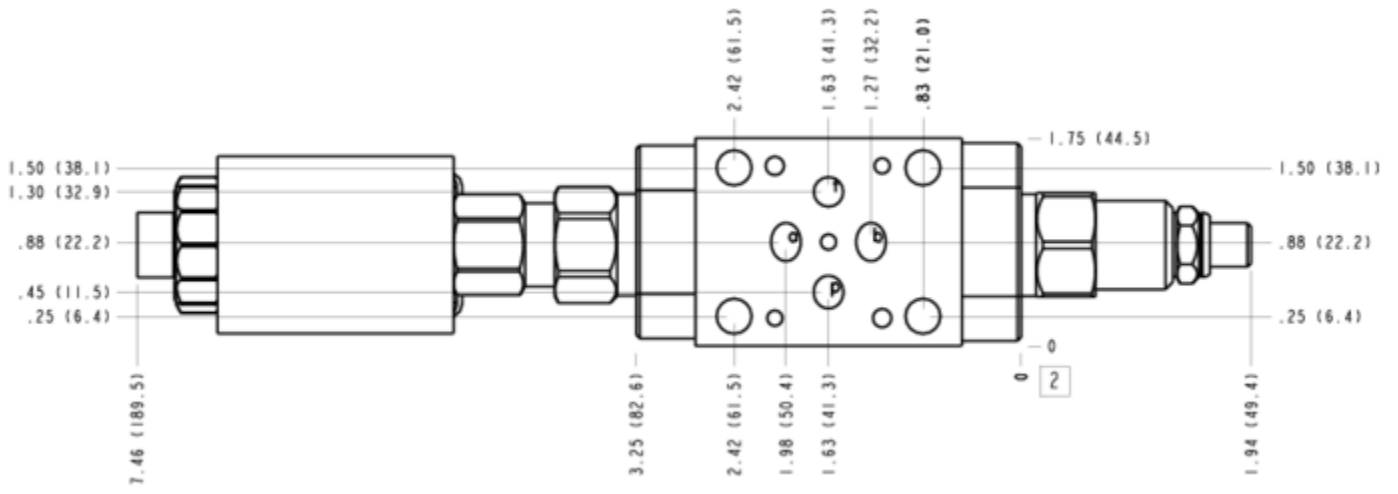
- The sharp-edged orifice design minimizes flow variations due to viscosity changes.
- A balanced adjustment mechanism allows for easy adjustment even at high pressures.
- Because needle valves are non-compensating devices, the fixed orifice size will regulate flow through the valve in proportion to the square root of the pressure differential across ports 1 and 2.
- Now available with FLeX Series solenoid valves. See CONFIGURATION section, SOLENOID DESIGNATION to specify.

MANIFOLD FACES

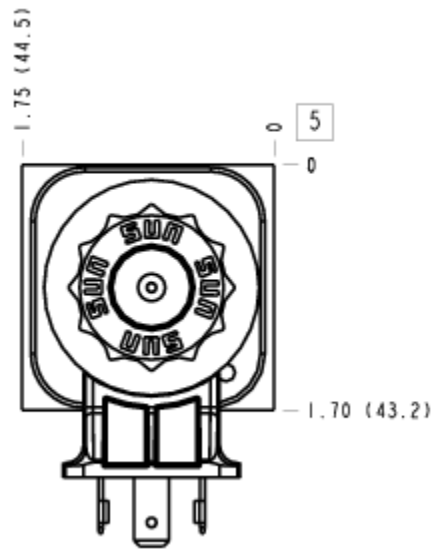
FACE GRID

| | | | |
|---|----|----|----|
| 1 | 2 | 3 | 4 |
| 5 | 6 | 7 | 8 |
| 9 | 10 | 11 | 12 |

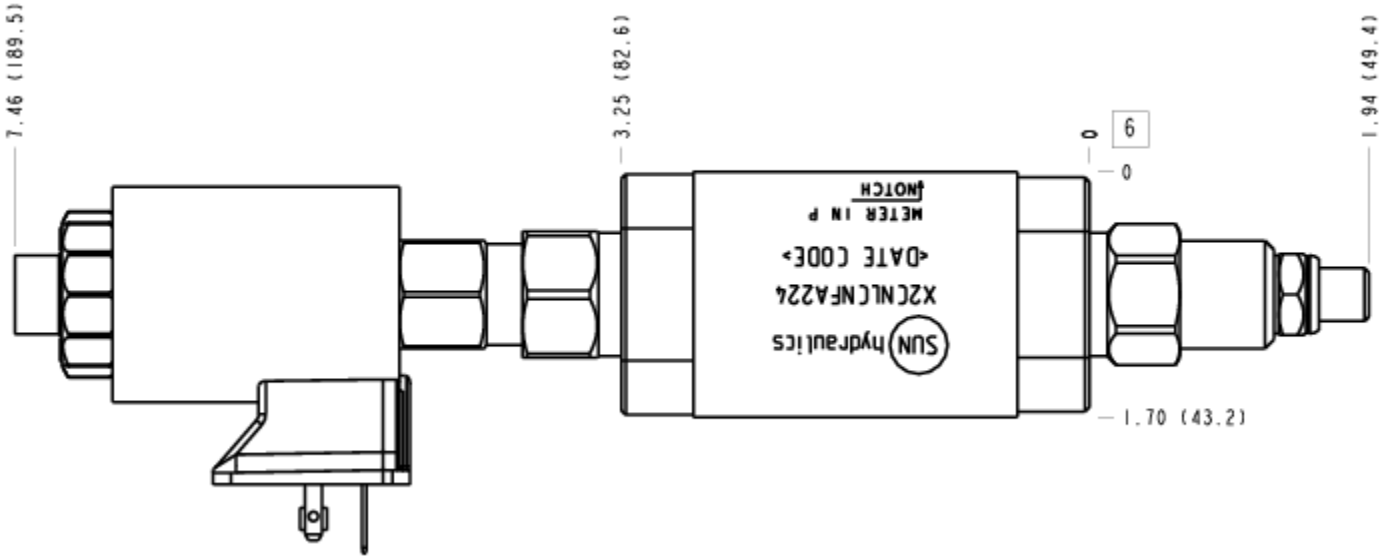
FACE 2



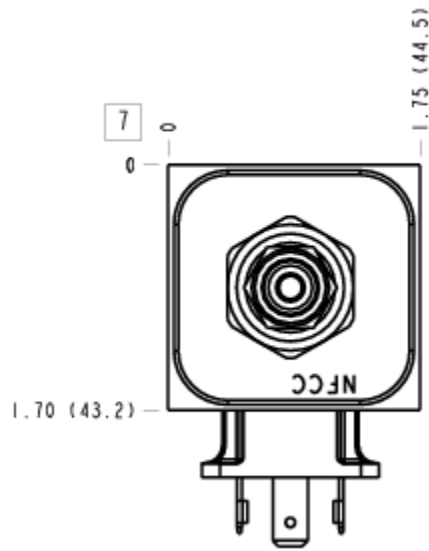
FACE 5



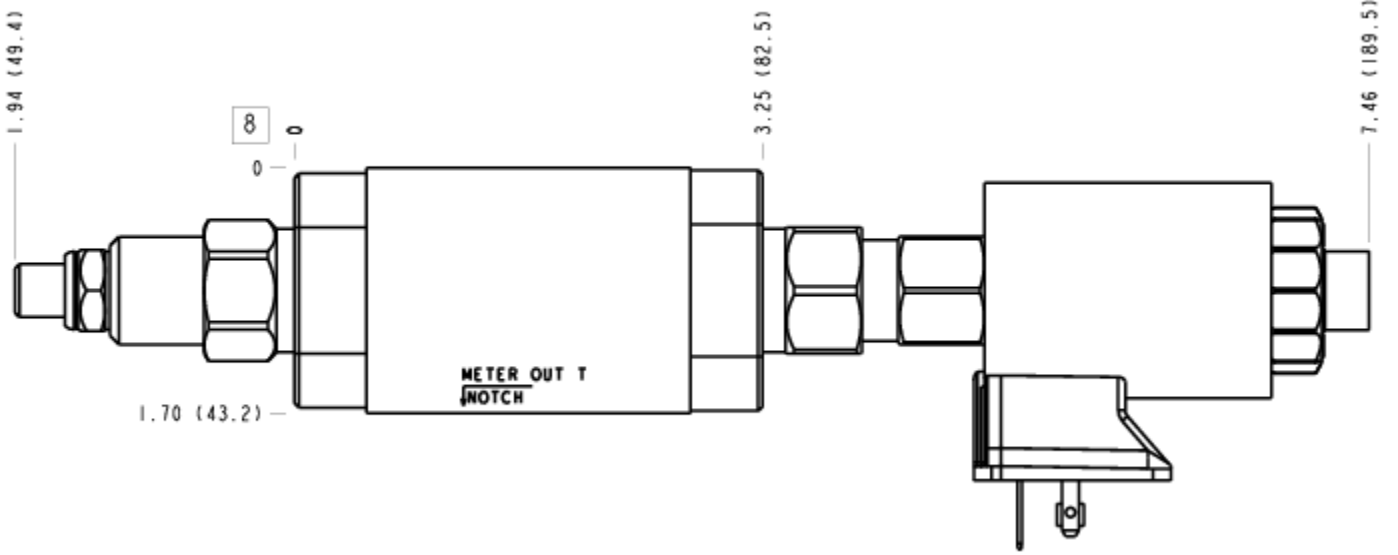
FACE 6



FACE 7



FACE 8



FACE 10

