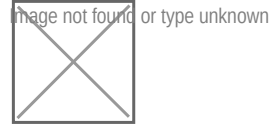


Meter in P Normally Open



**TECHNICAL DATA** NOTE: DATA MAY VARY BY CONFIGURATION. SEE CONFIGURATION SECTION.

Body Type	apilables
Interface	ISO 05
Capacity	120 L/min.
Body Features	alimentación regulada en P
Control Flow Range	0 - 12 gpm
Seal Plate Included (see notes)	No
Stack Height	62 mm

**OPTION SELECTION EXAMPLE: X2DXLANFA224**

CONTROL	(L) SETTING RANGE	(A) SEAL MATERIAL	(N)
<b>L</b> Tuning Adjustment	<b>A</b> Replaceable Orifice .1 - 12 gpm (0,4 - 45 L/min.)	<b>N</b> Buna-N	
X Not Adjustable	<b>B</b> Permanent Orifice .1 - 12 gpm (0,4 - 45 L/min.)	<b>V</b> Viton	
	<b>I</b> Incomplete (no orifice) 17 gpm (64 L/min.)		

**INCLUDED COMPONENTS**

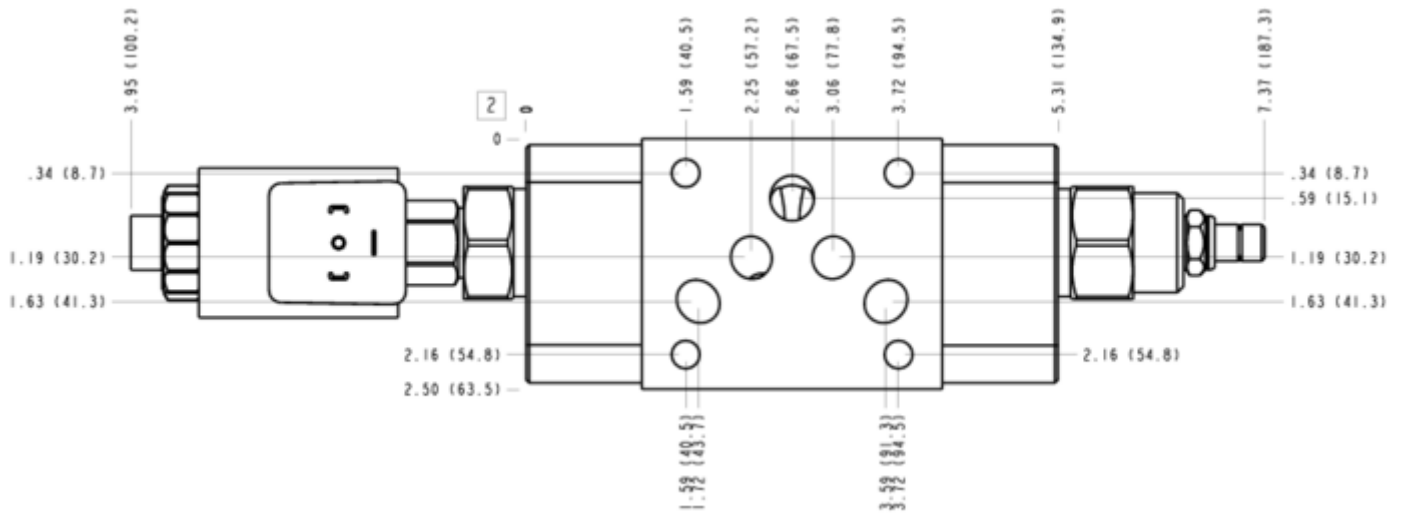
Part	Description	Quantity
500-001-014*	O-Ring	5
DFDA8DN	Cartridge	1
DTAFMHN224	Cartridge	1
FXDALAN	Cartridge - Primary	1

**MANIFOLD FACES**

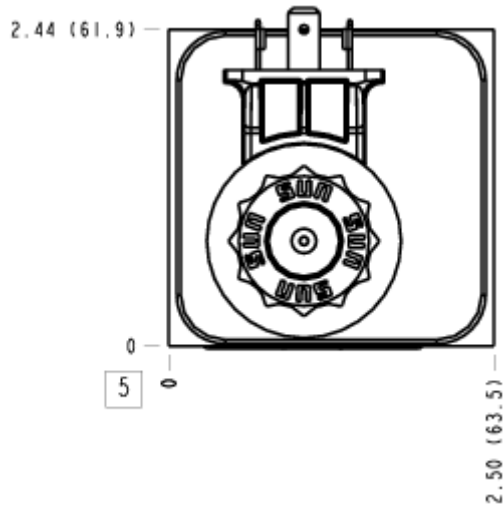
**FACE GRID**

1	2	3	4
5	6	7	8
9	10	11	12

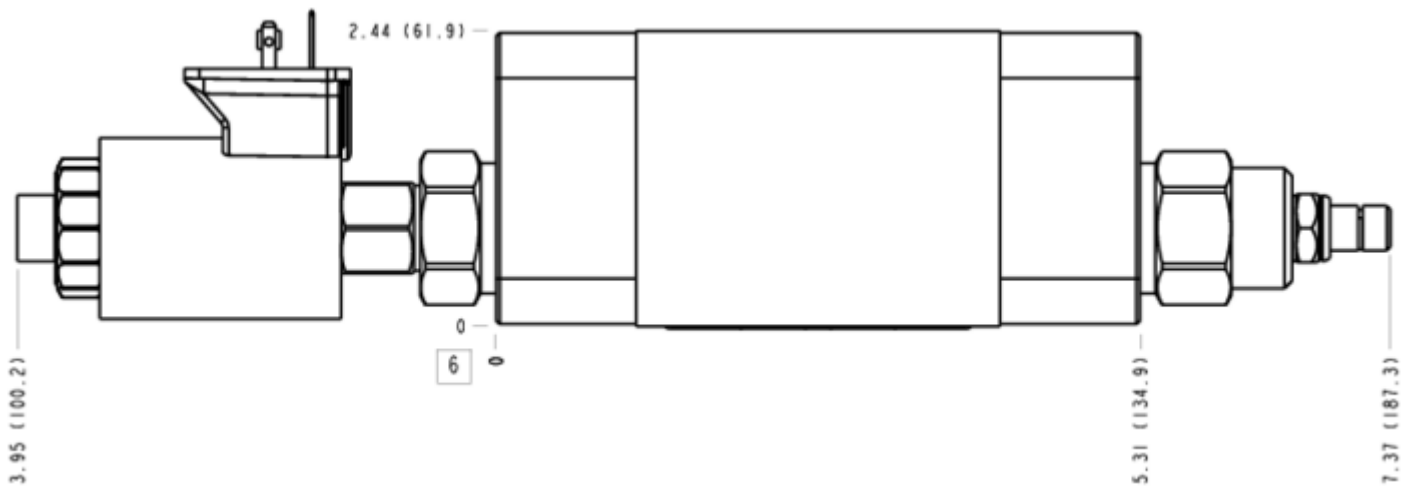
### FACE 2



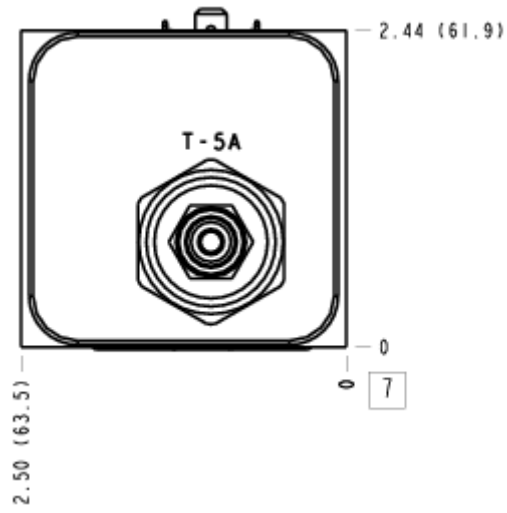
### FACE 5



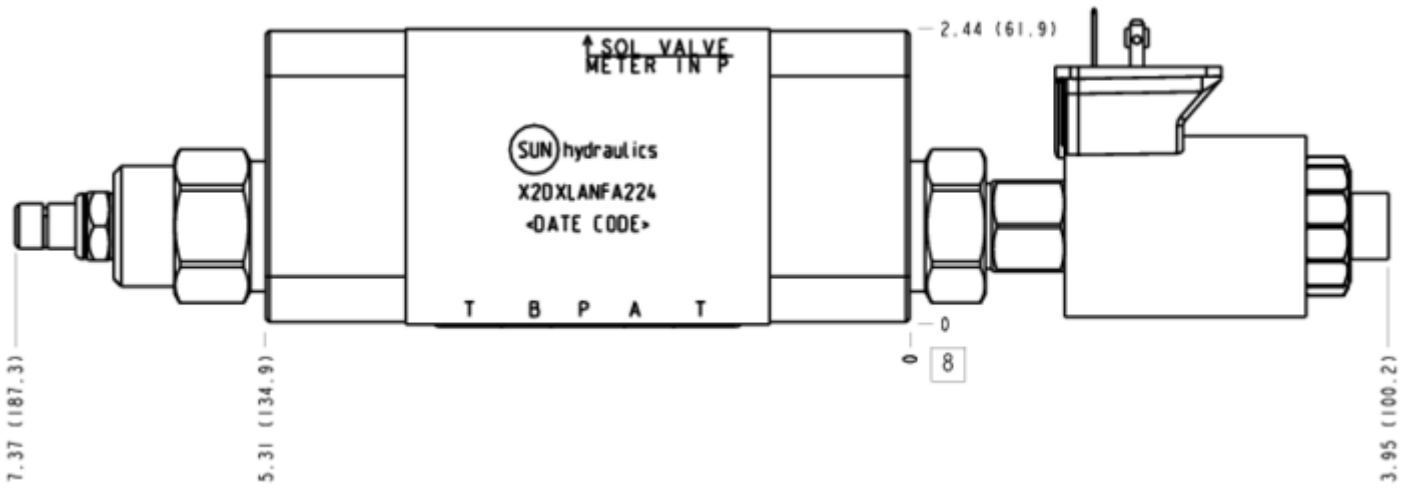
### FACE 6



### FACE 7



### FACE 8



### FACE 10

