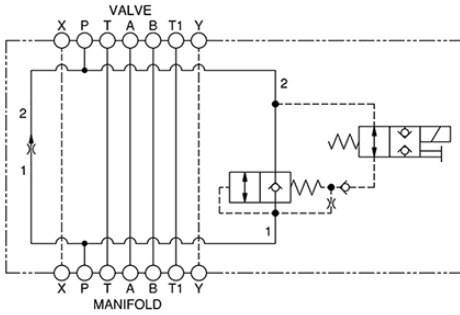


Meter In P Normally Closed



Meter In P Normally Open

TECHNICAL DATA NOTE: DATA MAY VARY BY CONFIGURATION. SEE CONFIGURATION SECTION.

Body Type	aplilables
Interface	ISO 05 - X&Y
Capacity	120 L/min.
Body Features	alimentación regulada en P
Control Flow Range	0 - 12 gpm
Seal Plate Included (see notes)	No
Stack Height	63 mm

OPTION SELECTION EXAMPLE: X2EXXANFA

CONTROL	(X) SETTING RANGE	(A) SEAL MATERIAL	(N)
X Not Adjustable	A Replaceable Orifice .1 - 12 gpm (0,4 - 45 L/min.)	N Buna-N	
C Tamper Resistant - Factory Set	B Permanent Orifice .1 - 12 gpm (0,4 - 45 L/min.)	V Viton	
K manilla	I Incomplete (no orifice) 17 gpm (64 L/min.)		
L Tuning Adjustment			

INCLUDED COMPONENTS

Part	Description	Quantity
DFDA8DN	Cartridge	1
DTAFMHN	Cartridge	1
FXDAXAN	Cartridge - Primary	1