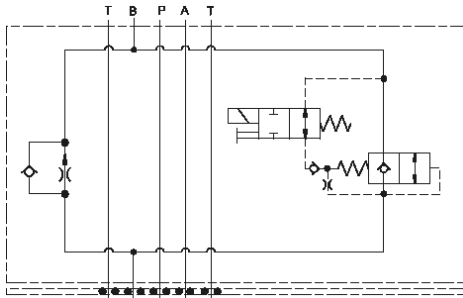
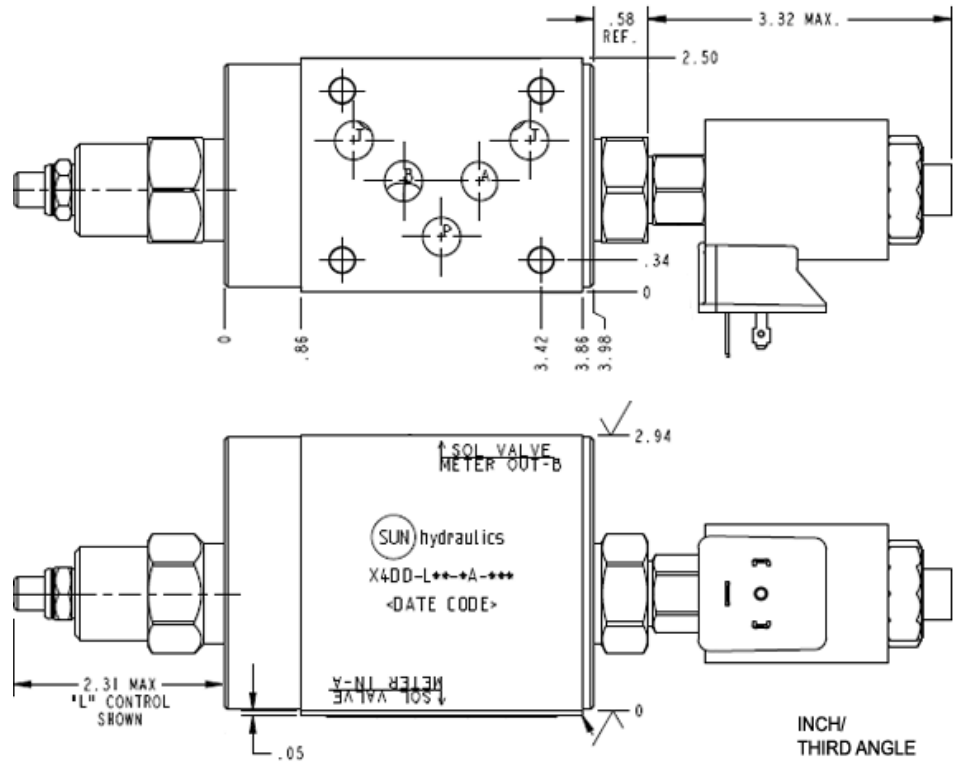


Meter in A Normally Open



Meter out B Normally Open



TECHNICAL DATA NOTE: DATA MAY VARY BY CONFIGURATION. SEE CONFIGURATION SECTION.

Body Type	apilables
Interface	ISO 05
Body Features	Meter in on A or meter out on B
Control Flow Range	0 - 12 gpm
Seal Plate Included (see notes)	Yes
Stack Height	76 mm

CONFIGURATION OPTIONS

Model Code Example: X4DDLANFA224

CONTROL	(L) ADJUSTMENT RANGE	(A) SEAL MATERIAL	(N)
L Standard Screw Adjustment	A .2 - 12 gpm (0,8 - 45 L/min.)	N Buna-N	
	B .2 - 3 gpm (0,8 - 11 L/min.)	V Viton	

INCLUDED COMPONENTS

Part	Description	Quantity
500-001-014*	O-Ring	5
700-001*	Seal Plate	1
DFDA8DN	Cartridge	1
DTAFMHN224	Cartridge	1
FDCBLAN	Cartridge - Primary	1