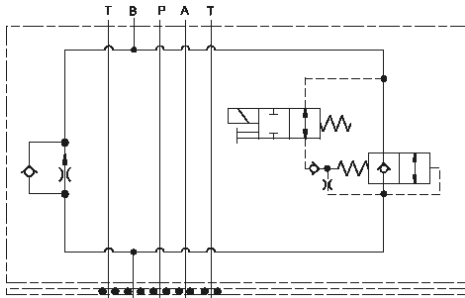
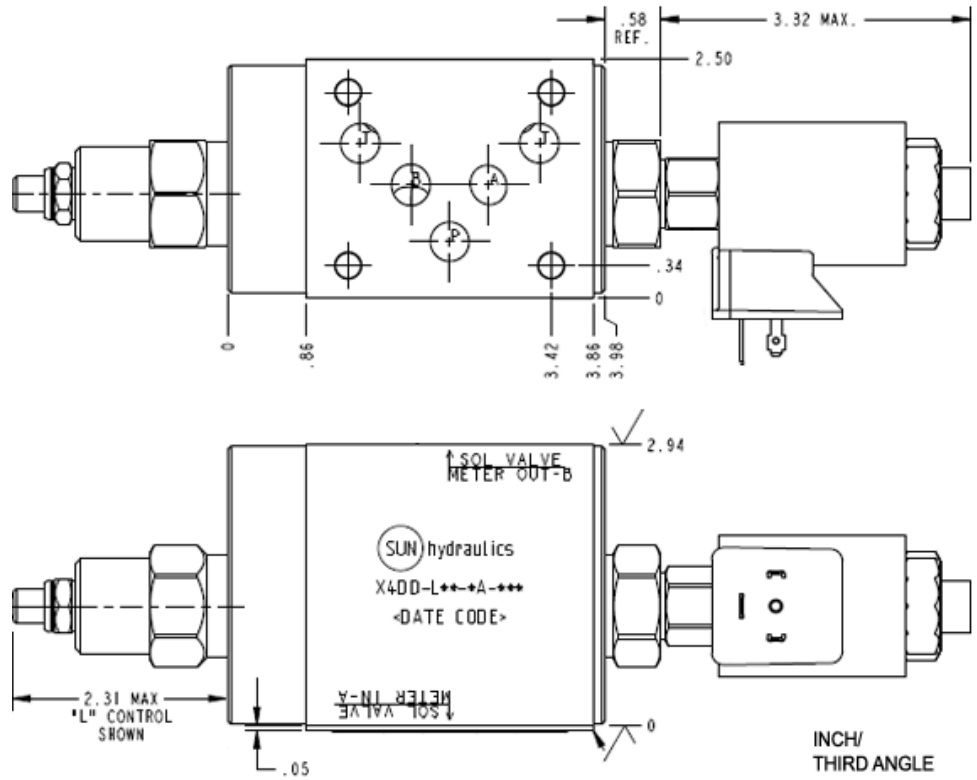


Meter in A Normally Open



Meter out B Normally Open



**CONFIGURATION**

<b>L</b>	Control	Standard Screw Adjustment
<b>A</b>	Adjustment Range	.2 - 12 gpm (0,8 - 45 L/min.)
<b>N</b>	Seal Material	Buna-N
<b>F</b>	Solenoid Designation	740 Coil-Normally Open (with FDCB primary cartridge, Totalmente ajustable compensado por presión control de caudal válvula con anti-retorno de caudal inverso )
<b>A</b>	Port and Material Designation	A Aluminum
<b>224</b>	Coil	DIN 43650 4 pin (Hirschman) 24 VDC

**TECHNICAL DATA**

Body Type	apilables	NOTE: DATA MAY VARY BY
Interface	ISO 05	
Capacity	120 L/min.	
Body Features	Meter in on A or meter out on B	
Control Flow Range	0 - 12 gpm	
Seal Plate Included (see notes)	Yes	
Stack Height	76 mm	

**OPTION SELECTION EXAMPLE: X4DDLANFA224**

CONTROL	(L) ADJUSTMENT RANGE	(A) SEAL MATERIAL	(N)
<b>L</b> Standard Screw Adjustment	<b>A</b> .2 - 12 gpm (0,8 - 45 L/min.)	<b>N</b> Buna-N	
	<b>B</b> .2 - 3 gpm (0,8 - 11 L/min.)	<b>V</b> Viton	

**INCLUDED COMPONENTS**

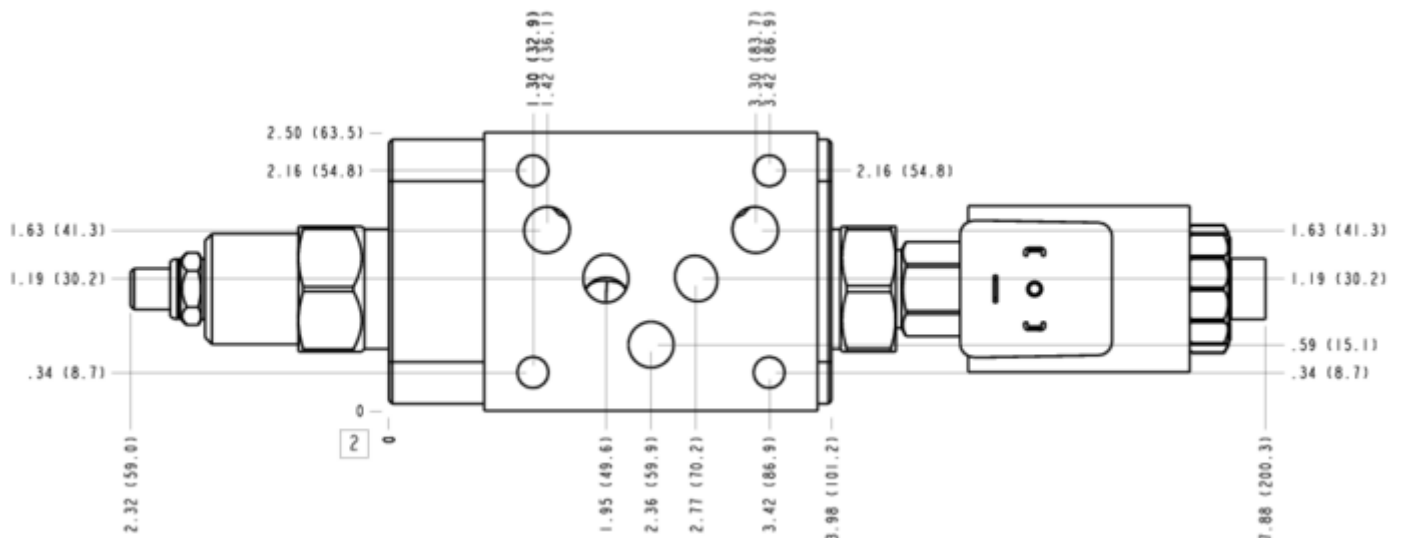
Part	Description	Quantity
500-001-014*	O-Ring	5
700-001*	Seal Plate	1
DFDA8DN	Cartridge	1
DTAFMHN224	Cartridge	1
FDCBLAN	Cartridge - Primary	1

**MANIFOLD FACES**

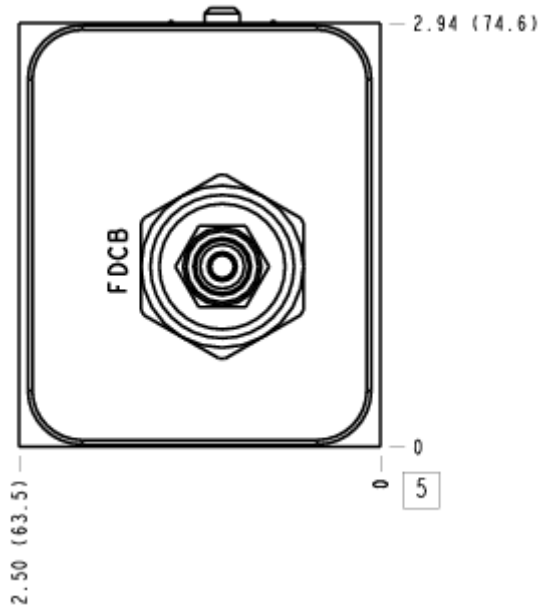
**FACE GRID**

1	2	3	4
5	6	7	8
9	10	11	12

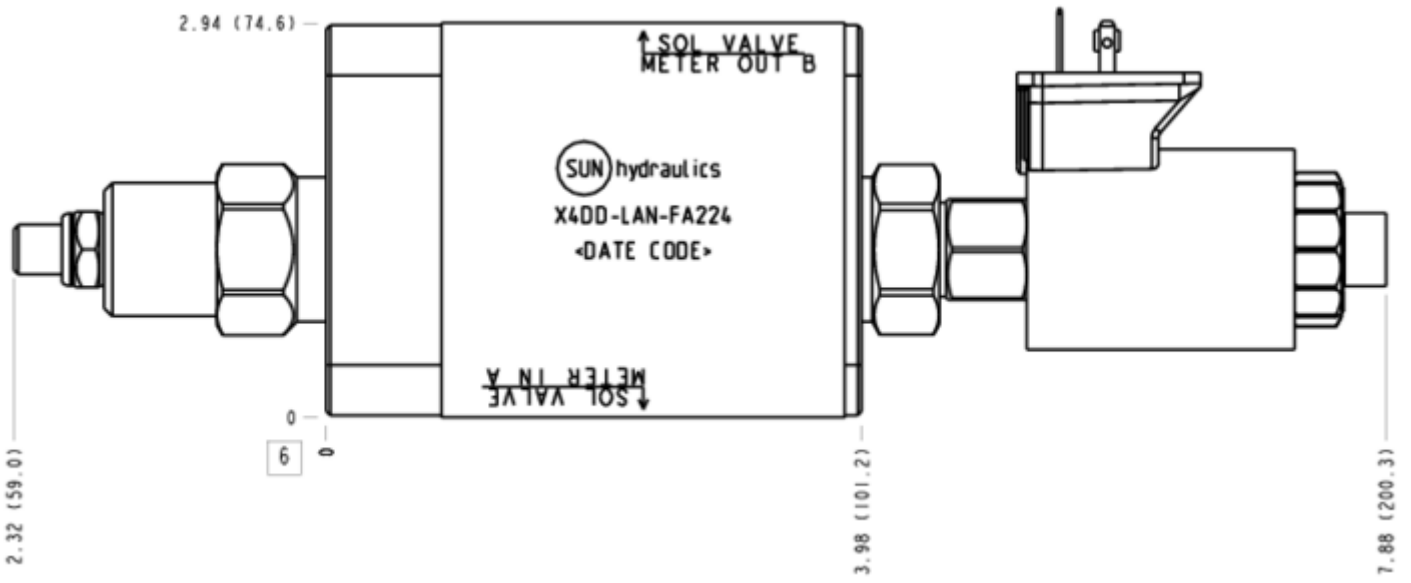
**FACE 2**



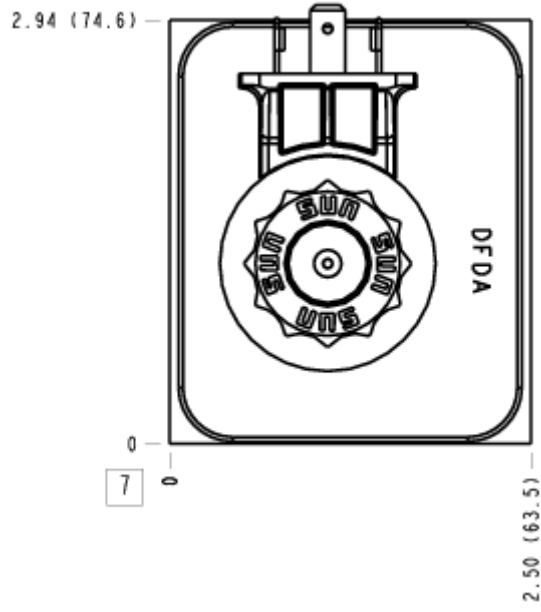
### FACE 5



### FACE 6



FACE 7



FACE 10

