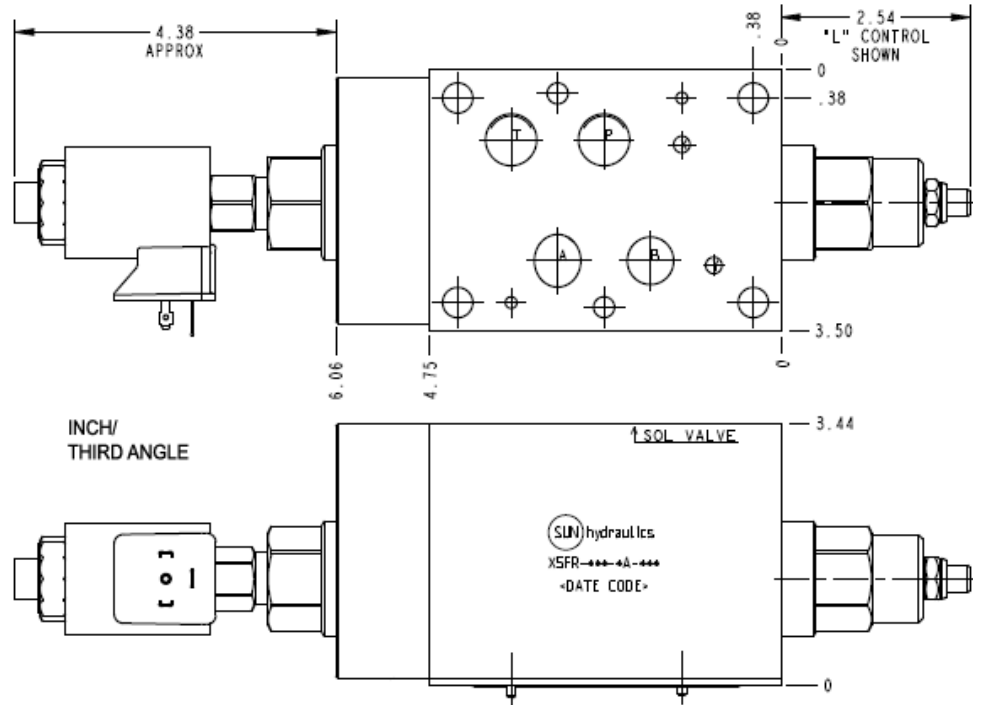


Meter out A Normally Open



This assembly consists of a fully-adjustable needle valve with reverse-flow check which provides precise flow regulation for meter-in or meter-out applications. It is infinitely adjustable from nearly closed up to the maximum flow. An integral high-capacity check valve provides unrestricted flow in the reverse direction. The rapid or feed rate is selected by a solenoid operated (normally open or closed) 2-way, 2-position valve.

TECHNICAL DATA NOTE: DATA MAY VARY BY CONFIGURATION. SEE CONFIGURATION SECTION.

Body Type	Sandwich
Interface	ISO 07
Body Features	Meter out A
Control Flow Range	0 - 30 gpm
Seal Plate Included (see notes)	Yes
Stack Height	3.52 in.

- NOTES:**
- Stack height value in technical data table includes seal retainer plate.
 - For detailed information regarding the cartridges contained in this assembly, click on the models codes shown in the Included Components tab.
 - Important:** Carefully consider the maximum system pressure. The pressure rating of the manifold is dependent on the manifold material, with the port type/size a secondary consideration. Manifolds constructed of aluminum are not rated for pressures higher than 3000 psi (210 bar), regardless of the port type/size specified.

CONFIGURATION OPTIONS

Model Code Example: X5FRLCNFA224

CONTROL	(L)	REVERSE FLOW CHECK	(C)	SEAL MATERIAL	(N)	
L		Standard Screw Adjustment	C	30 psi (2 bar)	N	Buna-N
		A		4 psi (0,3 bar)	V	Viton
		B		15 psi (1 bar)		
		D		50 psi (3,5 bar)		
		E		75 psi (5 bar)		

INCLUDED COMPONENTS

Part	Description	Quantity
500-001-111*	O-Ring	2
500-001-118*	O-Ring	4
700-006*	Seal Plate	1
811-001-006*	Pin	2
DFEA8DN	Cartridge	1
DTAFMHN224	Cartridge	1
NCFBLCN	Cartridge - Primary	1