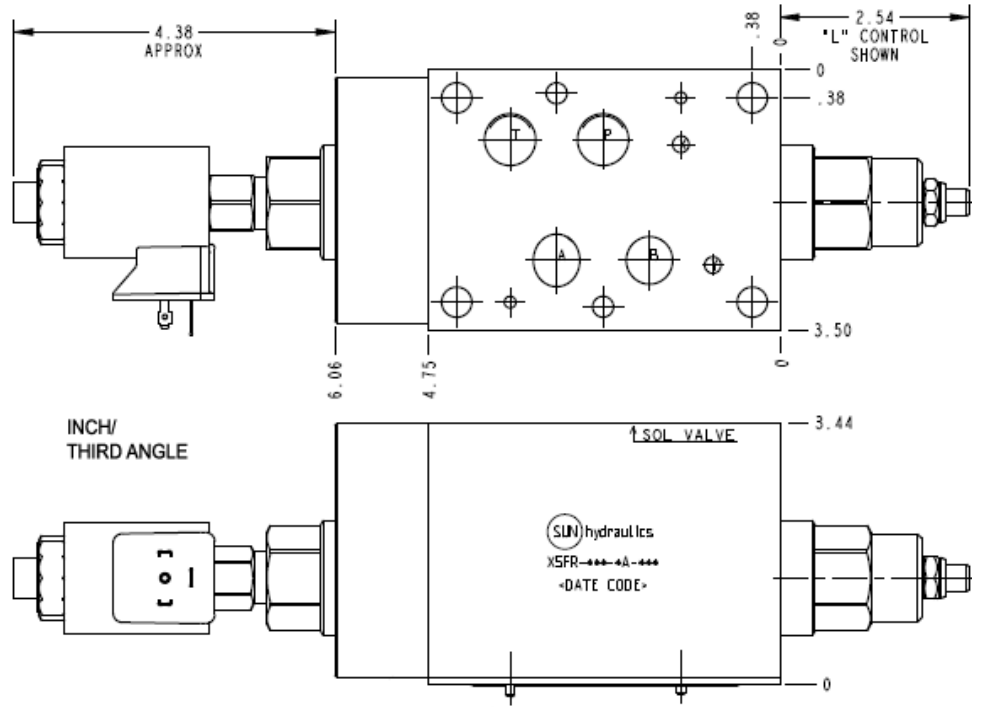


Meter out A Normally Open



TECHNICAL DATA NOTE: DATA MAY VARY BY CONFIGURATION. SEE CONFIGURATION SECTION.

	ISO 07
	240 L/min.
Stack Height	90 mm
()	
	0 - 30 gpm
	A

OPTION SELECTION EXAMPLE: X5FRLCNFA224

(L)

(C)

(N)

L	C	N
H	A 30 psi (2 bar) B 4 psi (0,3 bar) C 15 psi (1 bar) D 50 psi (3,5 bar) E 75 psi (5 bar)	V

INCLUDED COMPONENTS

Part	Description	Quantity
500-001-111*	O-Ring	2
500-001-118*	O-Ring	4
700-006*	Seal Plate	1
811-001-006*	Pin	2
DFEA8DN	Cartridge	1
DTAFMHN224	Cartridge	1
NCFBLCN	Cartridge - Primary	1

TECHNICAL FEATURES

- FLeX