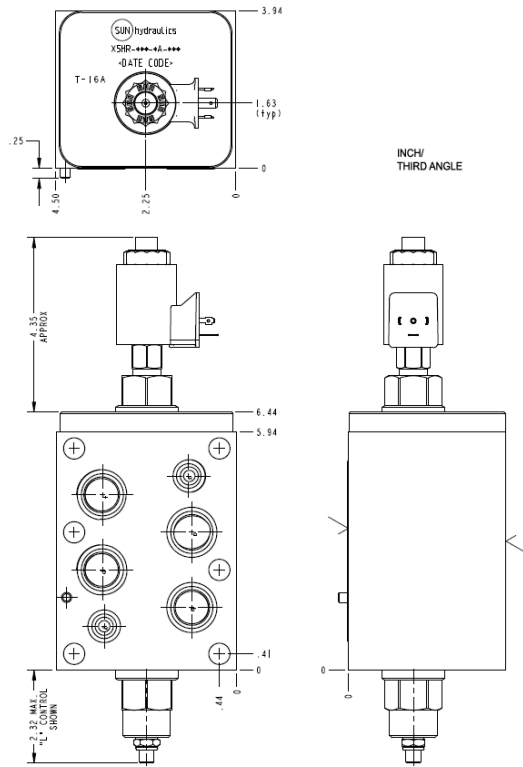


Meter out A Normally Open



**TECHNICAL DATA** NOTE: DATA MAY VARY BY CONFIGURATION. SEE CONFIGURATION SECTION.

|               |                        |
|---------------|------------------------|
| Body Type     | apiliables             |
| Interface     | ISO 08                 |
| Body Features | descarga regulada en A |
| Stack Height  | 100 mm                 |

**CONFIGURATION OPTIONS**

Model Code Example: X5HRLCNFA224

| CONTROL                            | (L) ANTI-RETORNO DE CAUDAL INVERSO | (C) SEAL MATERIAL | (N) |
|------------------------------------|------------------------------------|-------------------|-----|
| <b>L</b> Standard Screw Adjustment | <b>C</b> 30 psi (2 bar)            | <b>N</b> Buna-N   |     |
|                                    |                                    | <b>V</b> Viton    |     |

**INCLUDED COMPONENTS**

| Part         | Description         | Quantity |
|--------------|---------------------|----------|
| 500-001-114* | O-Ring              | 2        |
| 500-001-121* | O-Ring              | 4        |
| 811-001-002* | Locating Pin        | 1        |
| DFEA8DN      | Cartridge           | 1        |
| DTAFMHN224   | Cartridge           | 1        |
| NCFBLCN      | Cartridge - Primary | 1        |