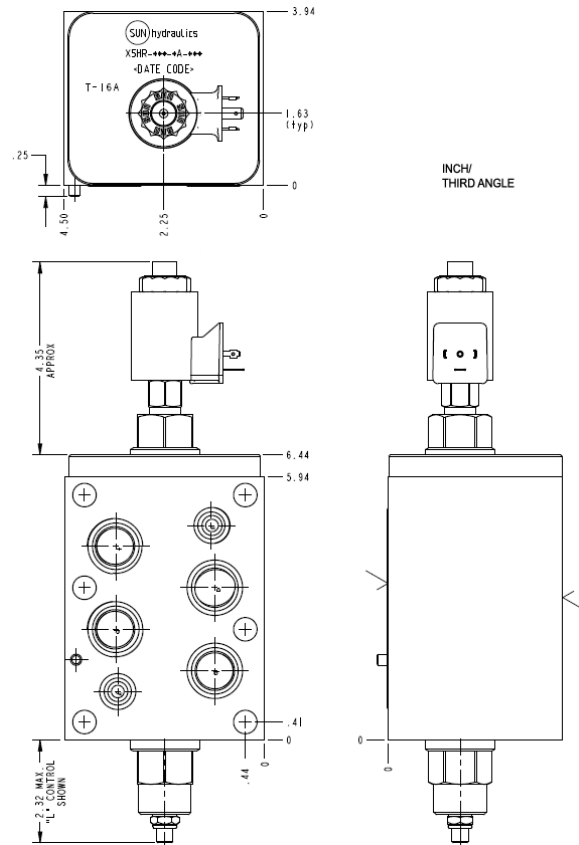


Meter out A Normally Open



TECHNICAL DATA NOTE: DATA MAY VARY BY CONFIGURATION. SEE CONFIGURATION SECTION.

Body Type	apiliables
Interface	ISO 08
Capacity	120 L/min. (9,7 mm)
Body Features	descarga regulada en A
Stack Height	100 mm

OPTION SELECTION EXAMPLE: X5HRLCNFA224

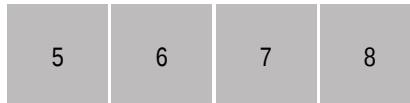
CONTROL	(L) ANTI-RETORNO DE CAUDAL INVERSO	(C) SEAL MATERIAL	(N)
L Standard Screw Adjustment	C 30 psi (2 bar)	N Buna-N	V Viton

INCLUDED COMPONENTS

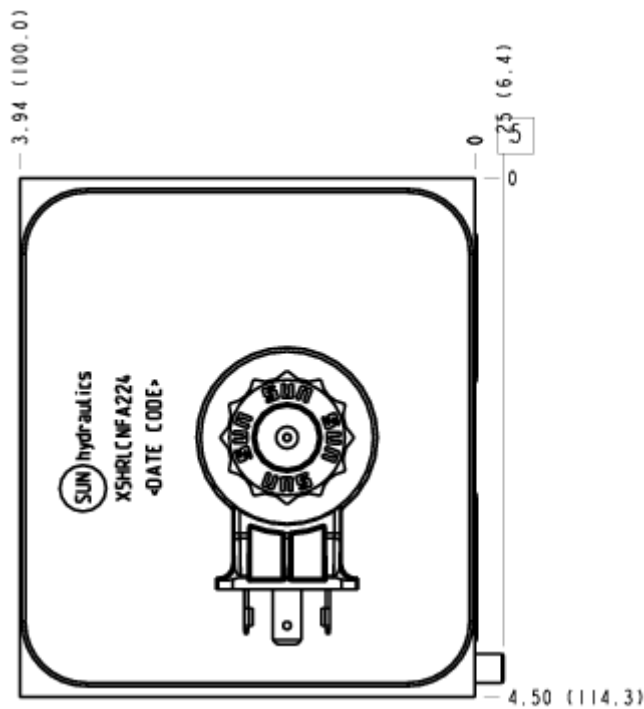
Part	Description	Quantity
500-001-114*	O-Ring	2
500-001-121*	O-Ring	4
811-001-002*	Locating Pin	1
DFEA8DN	Cartridge	1
DTAFMHN224	Cartridge	1
NCFBLCN	Cartridge - Primary	1

MANIFOLD FACES

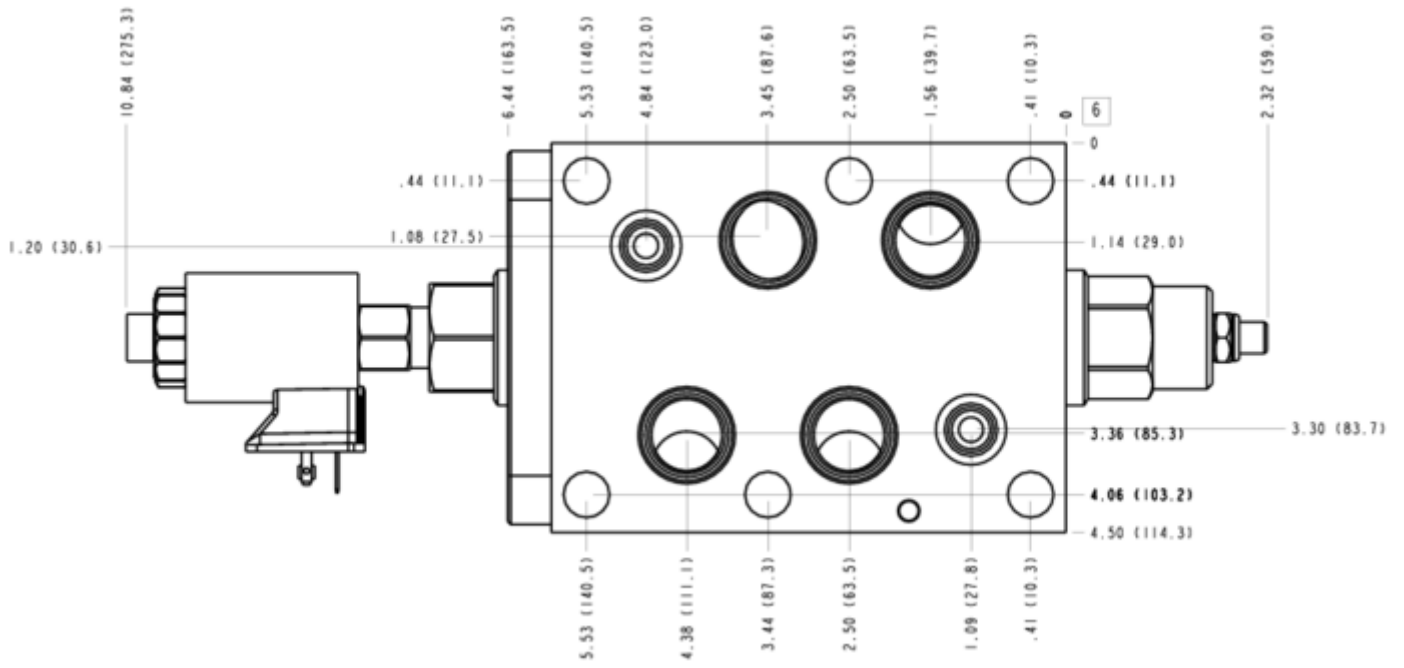
FACE GRID



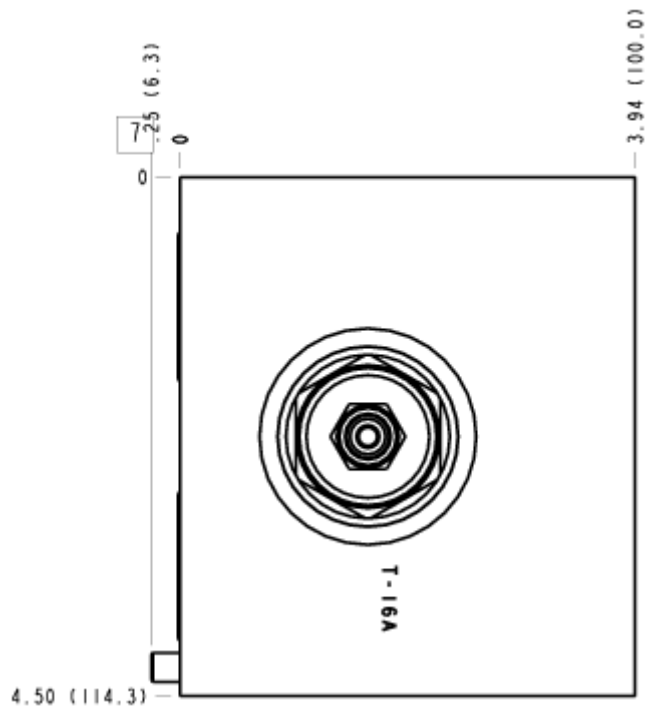
FACE 5



FACE 6



FACE 7



FACE 8

