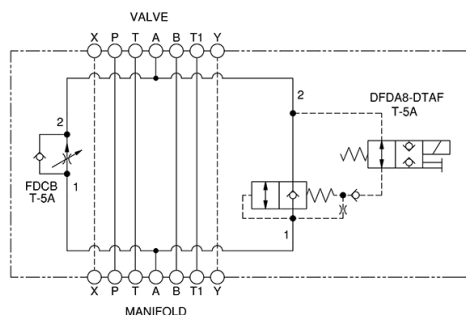


Meter In B Normally Open



Meter Out A Normally Open

This assembly consists of a fully-adjustable, pressure-compensated flow control with reverse-flow check which provides precise flow regulation for meter-in or meter-out applications where there may be wide pressure fluctuations. It is infinitely adjustable from nearly closed up to the maximum flow. An integral high-capacity check valve provides unrestricted flow in the reverse direction. The rapid or feed rate is selected by a solenoid operated (normally open or closed) 2-way, 2-position valve.

TECHNICAL DATA

| | |
|---------------------------------|---------------------------------|
| Body Type | Sandwich |
| Interface | ISO 05 - X&Y |
| Body Features | Meter in on B or meter out on A |
| Control Flow Range | 0 - 12 gpm |
| Seal Plate Included (see notes) | No |
| Stack Height | 2.99 in. |

CONFIGURATION

NOTES:

| | | |
|---|----------------------|--|
| L | Control | Standard Screw Adjustment |
| A | Adjustment Range | .2 - 12 gpm (0,8 - 45 L/min.) |
| N | Seal Material | Buna-N |
| F | Solenoid Designation | 740 Coil-Normally Open (with FDCB primary cartridge, Fully adjustable pressure compensated flow control valve with reverse flow check) |
| | Port and | |
| A | Material Designation | A Aluminum |

- Stack height value in technical data table includes seal retainer plate.
- This installation requires a seal retainer plate and seal kit which are purchased separately. See "Related Accessories" section.
- For detailed information regarding the cartridges contained in this assembly, click on the models codes shown in the Included Components tab.
- Important:** Carefully consider the maximum system pressure. The pressure rating of the manifold is dependent on the manifold material, with the port type/size a secondary consideration. Manifolds constructed of aluminum are not rated for pressures higher than 3000 psi (210 bar), regardless of the port type/size specified.



MODEL
X6ED

Solenoid-operated, rapid advance and feed flow control assembly with reverse flow check
CAPACITY: 30 gpm

Continued from
previous page

CONFIGURATION OPTIONS Model Code Example: X6EDLANFA

| CONTROL | | (L) | ADJUSTMENT RANGE | (A) | SEAL MATERIAL | (N) |
|---------|--------------------------------------|-----|-------------------------------|-----|---------------|-----|
| L | Standard Screw Adjustment | A | .2 - 12 gpm (0,8 - 45 L/min.) | N | Buna-N | |
| C | Tamper Resistant - Factory Set | B | .2 - 3 gpm (0,8 - 11 L/min.) | V | Viton | |
| H | Calibrated Handknob with Detent Lock | | | | | |
| Y | Tri-Grip Handknob | | | | | |

INCLUDED COMPONENTS

| Part | Description | Quantity |
|---------|---------------------|----------|
| DFDA8DN | Cartridge | 1 |
| DTAFMHN | Cartridge | 1 |
| FDCBLAN | Cartridge - Primary | 1 |