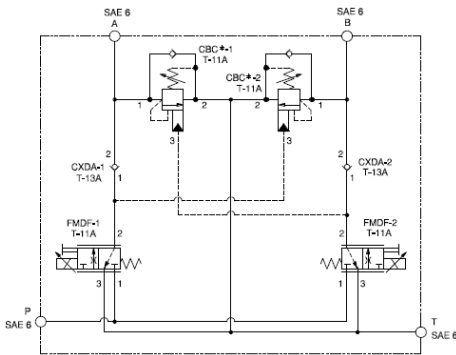




This valve assembly provides independent, proportional meter-in speed control for ports A and B, overrunning load control, and load-port relief protection. It also supplies make-up oil and flushes hot dirty oil out of the actuator. All oil coming out of the actuator returns to tank through port T.

TECHNICAL DATA NOTE: DATA MAY VARY BY CONFIGURATION. SEE CONFIGURATION SECTION.

Body Type	Line mount
-----------	------------



- NOTES:**
- When configured with the XMD driver, a wiring harness is required to connect the XMD to the system and must be purchased separately. Sun offers a selection of harnesses and are available under Electronics | I/O Modules | Accessories.
 - **Important:** Carefully consider the maximum system pressure. The pressure rating of the manifold is dependent on the manifold material, with the port type/size a secondary consideration. Manifolds constructed of aluminum are not rated for pressures higher than 3000 psi (210 bar), regardless of the port type/size specified.
 - For detailed information regarding the cartridges contained in this assembly, click on the models codes shown in the Included Components tab.

CONFIGURATION OPTIONS

Model Code Example: **XCCLLHNAI**

CONTROL	(L) FUNCTIONAL SETTING RANGE	(H) SEAL MATERIAL	(N)
L Standard Screw Adjustment	H 1000 - 4000 psi w/25 psi Check (70 - 280 bar w/ 1,7 bar Check), 3000 psi (210 bar) Standard Setting	N Buna-N	
C Tamper Resistant - Factory Set	A 1000 - 4000 psi w/4 psi Check (70 - 280 bar w/ 0,3 bar Check), 3000 psi (210 bar) Standard Setting	V Viton	
	B 400 - 1500 psi w/4 psi Check (28 - 105 bar w/ 0,3 bar Check), 1000 psi (70 bar) Standard Setting		
	I 400 - 1500 psi w/25 psi Check (28 - 105 bar w/ 1,7 bar Check), 1000 psi (70 bar) Standard Setting		

PRIMARY CARTRIDGE

(A)

A	3:1 (with CBCA primary cartridge, 3:1 pilot ratio, standard capacity counterbalance valve)
B	1.5:1 (with CBCBX primary cartridge, Fixed setting, 1.5:1 pilot ratio, standard capacity counterbalance valve)
G	4.5:1 (with CBCGX primary cartridge, Fixed setting, 4.5:1 pilot ratio, standard capacity counterbalance valve)
A	3:1 (with CBCAX primary cartridge, Fixed setting, 3:1 pilot ratio, standard capacity counterbalance valve)
G	4.5:1 (with CBCG primary cartridge, 4.5:1 pilot ratio, standard capacity counterbalance valve)
B	1.5:1 (with CBCB primary cartridge, 1.5:1 pilot ratio, standard capacity counterbalance valve)

INCLUDED COMPONENTS

Part	Description	Quantity
CBCALHN	Cartridge - Primary	2
CXDAXCN	Cartridge	2
FMDFMDN	Cartridge	2