

### TECHNICAL DATA

Body Type	Line mount
Capacity	60 L/min.
Mounting Hole Diameter	8.6 mm
Mounting Hole Depth	Through
Mounting Hole Quantity	3

**OPTION SELECTION EXAMPLE: XPDBLFNXJ**

CONTROL	(L) MAXIMUM ORIFICE DIAMETER	(F) SEAL MATERIAL	(N)
<b>L</b> Standard Screw Adjustment	<b>F</b> .33 in. (8,4 mm)	<b>N</b> Buna-N	
		<b>V</b> Viton	

PRIMARY CARTRIDGE	(X)
<b>X</b> X (with NFCD primary cartridge, Totalmente ajustable aguja válvula )	

**INCLUDED COMPONENTS**

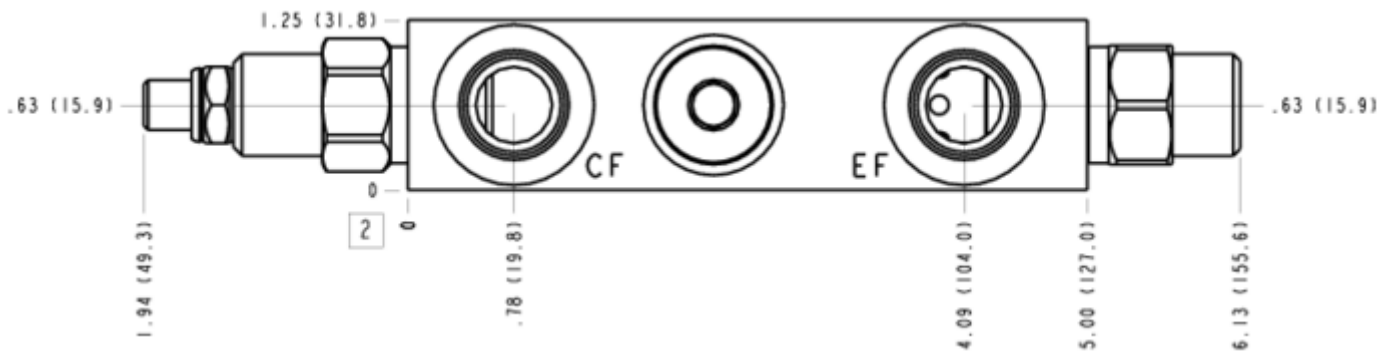
Part	Description	Quantity
A330-006-008*	SAE Plug	1
LHDAXFN	Cartridge	1
NFCDLFN	Cartridge - Primary	1

**MANIFOLD FACES**

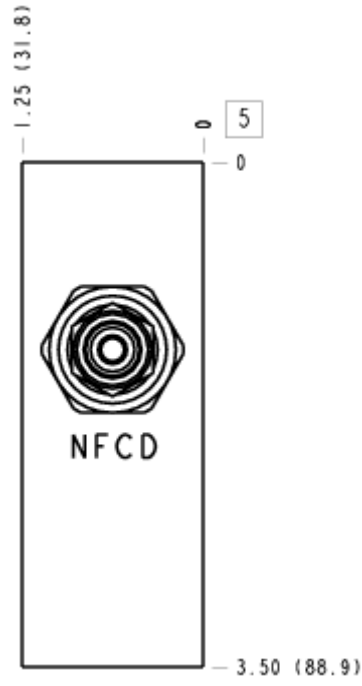
**FACE GRID**

1	2	3	4
5	6	7	8
9	10	11	12

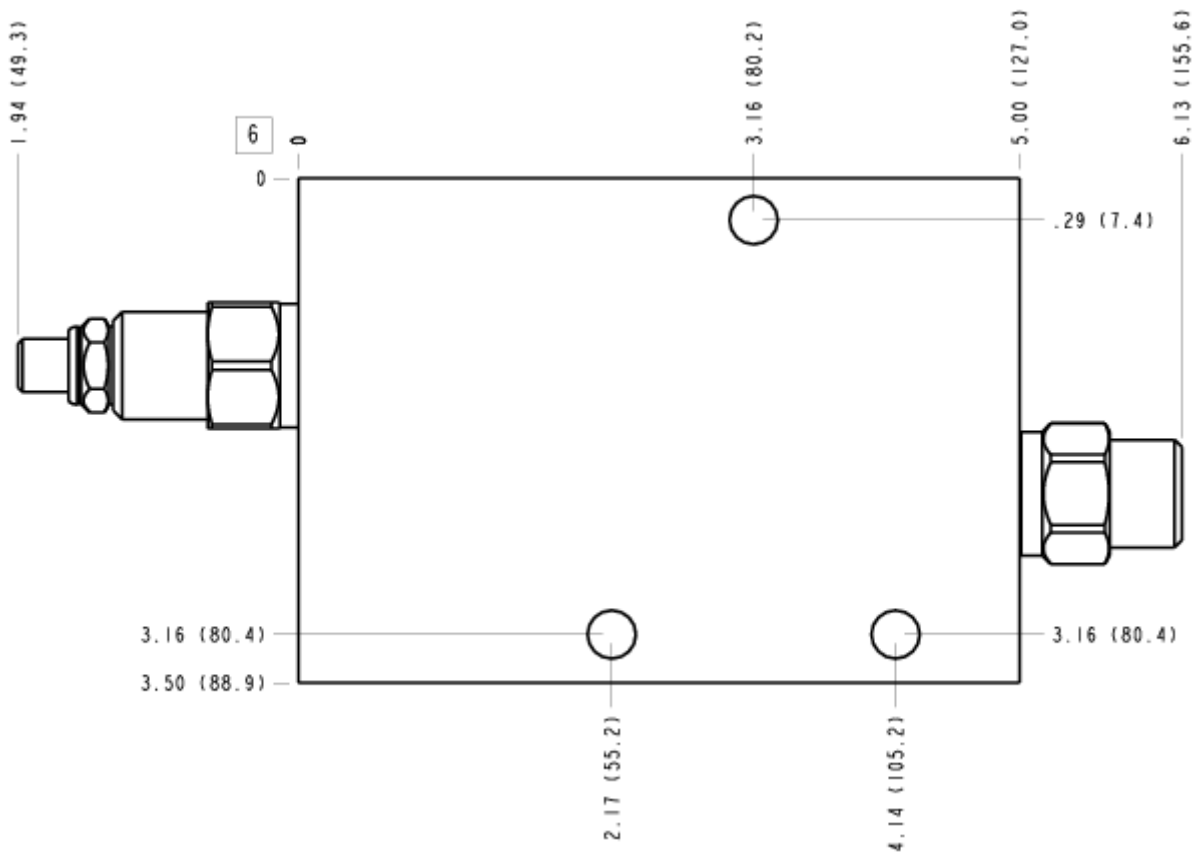
**FACE 2**



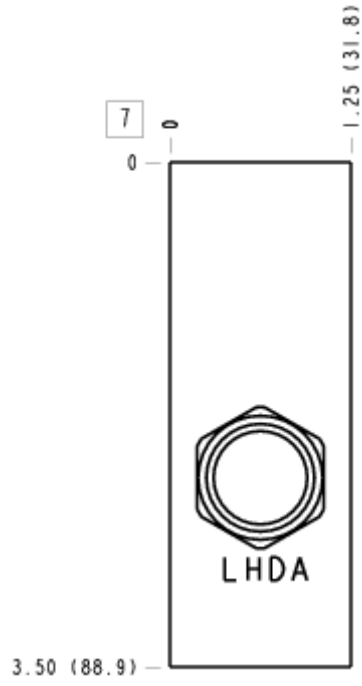
### FACE 5



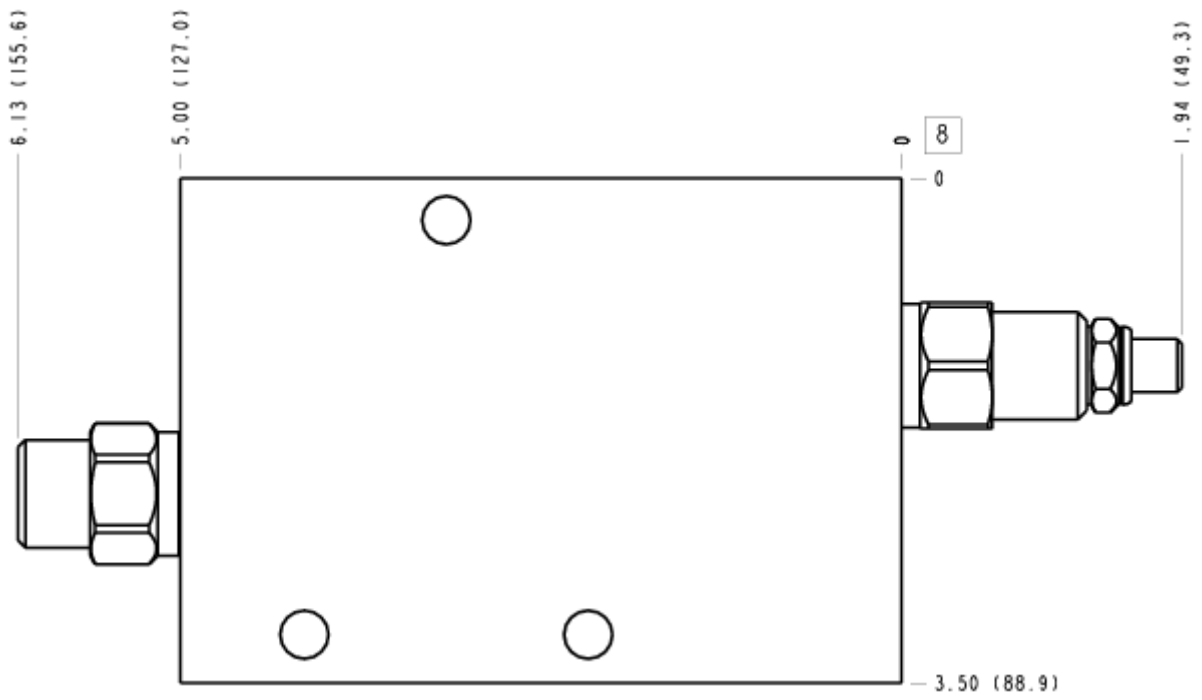
### FACE 6



FACE 7



FACE 8



FACE 10

