

TECHNICAL DATA NOTE: DATA MAY VARY BY CONFIGURATION. SEE CONFIGURATION SECTION.

	60 L/min.
	8.6 mm
	Through
	3

OPTION SELECTION EXAMPLE: XPDBLFNXJ

(L) (F) (N)

L	F .33 in. (8,4 mm)	N
---	--------------------	---

V

PRIMARY CARTRIDGE

(X)

X	X (with NFCD primary cartridge,)
---	-----------------------------------

INCLUDED COMPONENTS

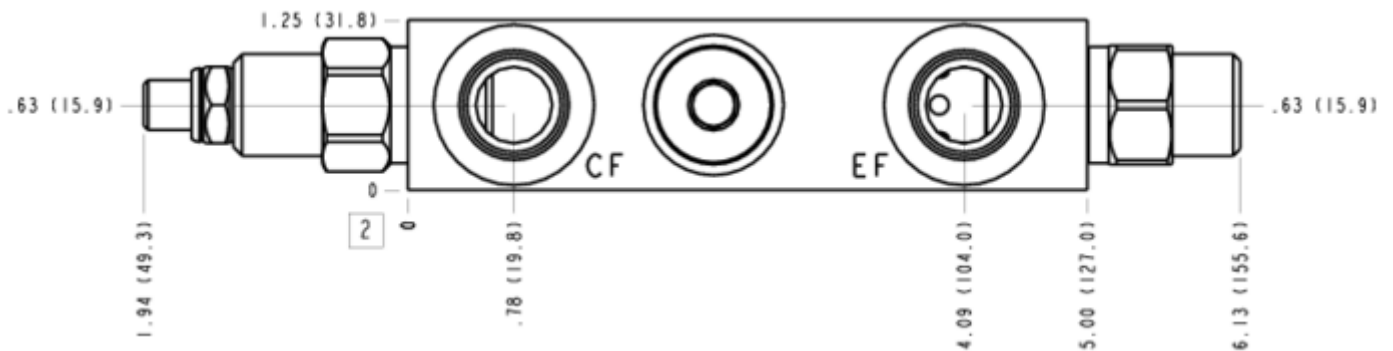
Part	Description	Quantity
A330-006-008*	SAE Plug	1
LHDAXFN	Cartridge	1
NFCDLFN	Cartridge - Primary	1

MANIFOLD FACES

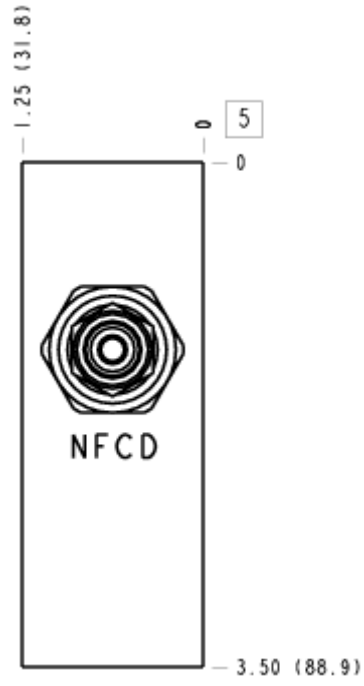
FACE GRID

1	2	3	4
5	6	7	8
9	10	11	12

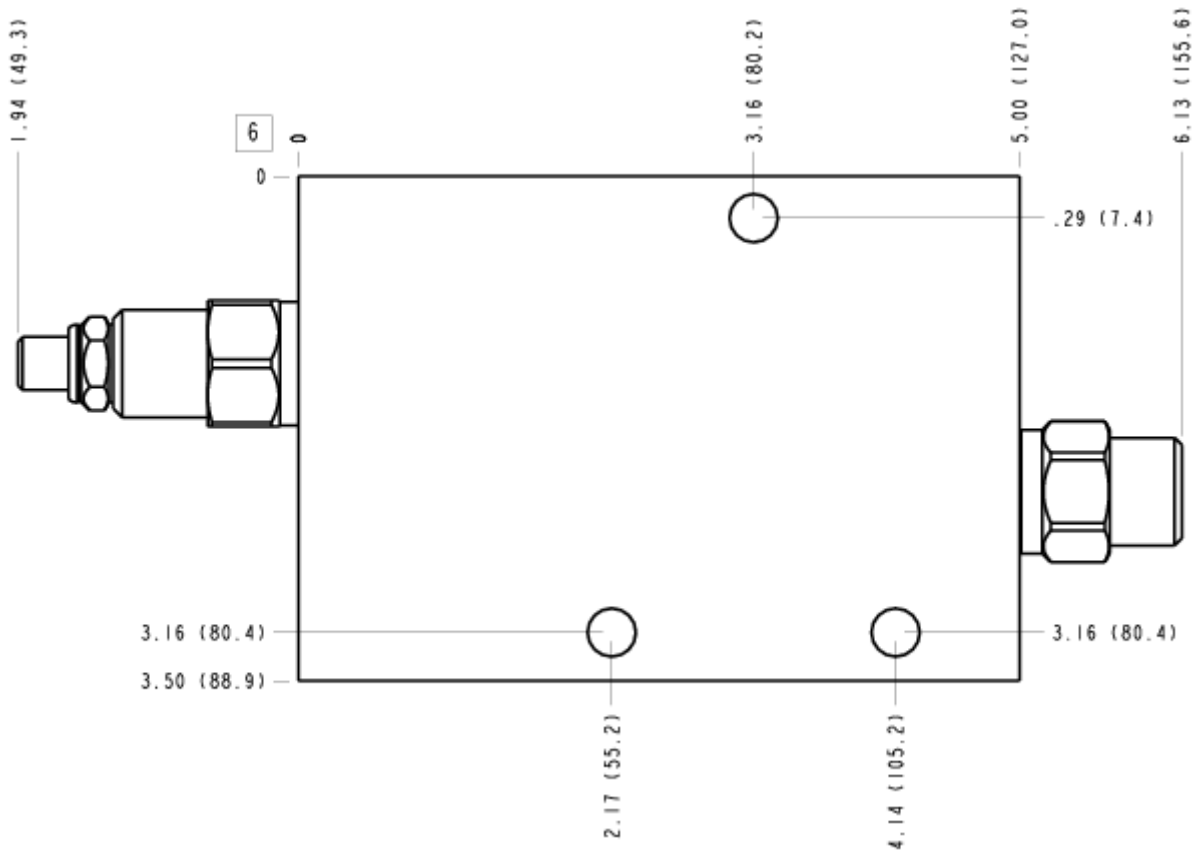
FACE 2



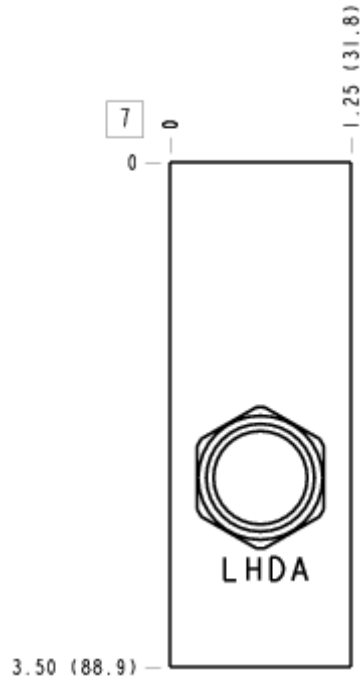
FACE 5



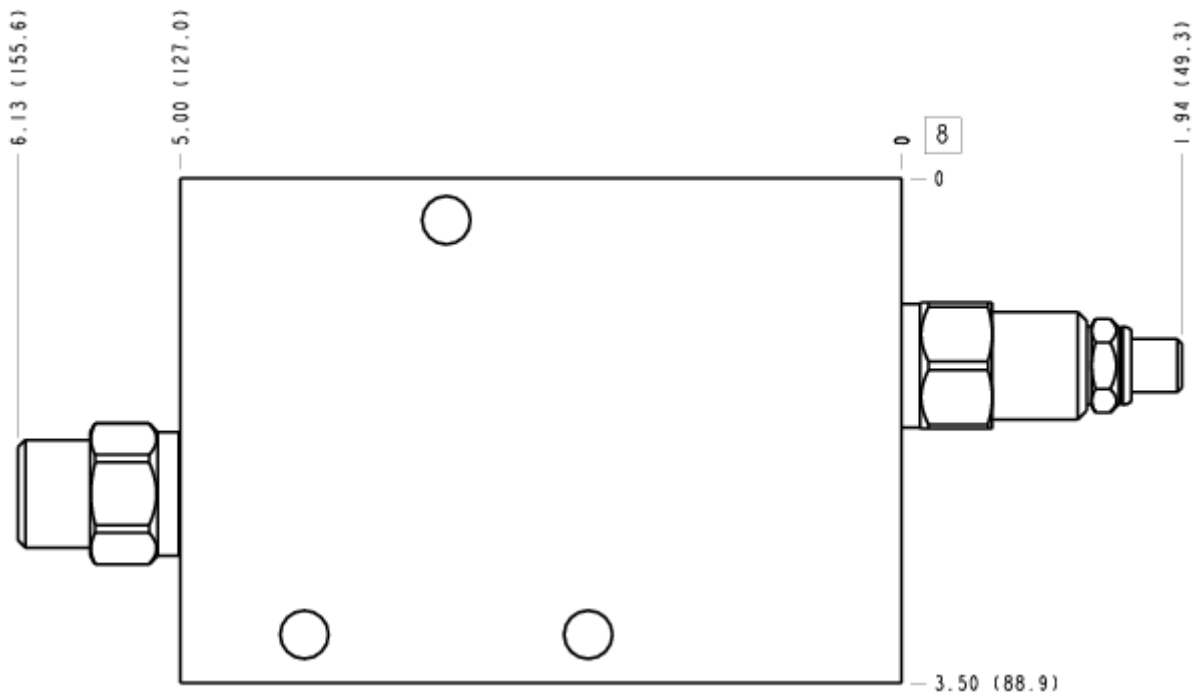
FACE 6



FACE 7



FACE 8



FACE 10

