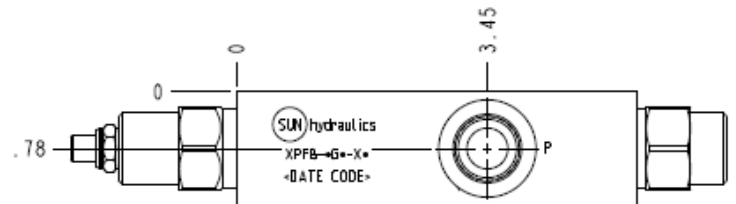
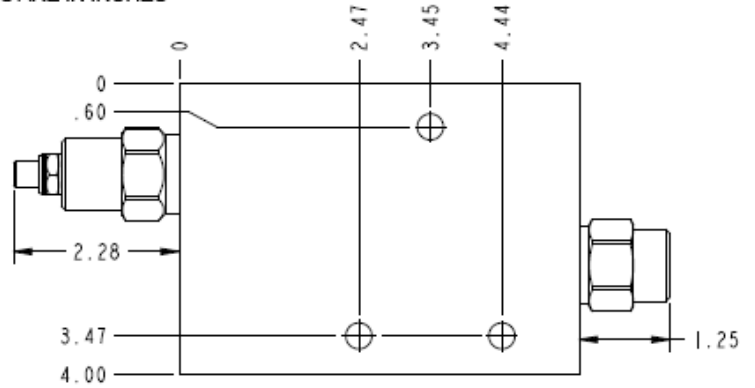


DIMENSIONS ARE IN INCHES



**TECHNICAL DATA** NOTE: DATA MAY VARY BY CONFIGURATION. SEE CONFIGURATION SECTION.

Body Type	montaje en línea
Capacity	120 L/min.
Mounting Hole Diameter	9,1 mm
Mounting Hole Depth	Through
Mounting Hole Quantity	3

**OPTION SELECTION EXAMPLE: XPFB LGNXK**

CONTROL	(L) MAXIMUM ORIFICE DIAMETER	(G) SEAL MATERIAL	(N)
<b>L</b> Standard Screw Adjustment	<b>G</b> .5 in. (12,7 mm)	<b>N</b> Buna-N	
<b>K</b> manilla		<b>V</b> Viton	
PRIMARY CARTRIDGE			(X)
<b>X</b> X (with NFDD primary cartridge, Totalmente ajustable aguja válvula )			

**INCLUDED COMPONENTS**

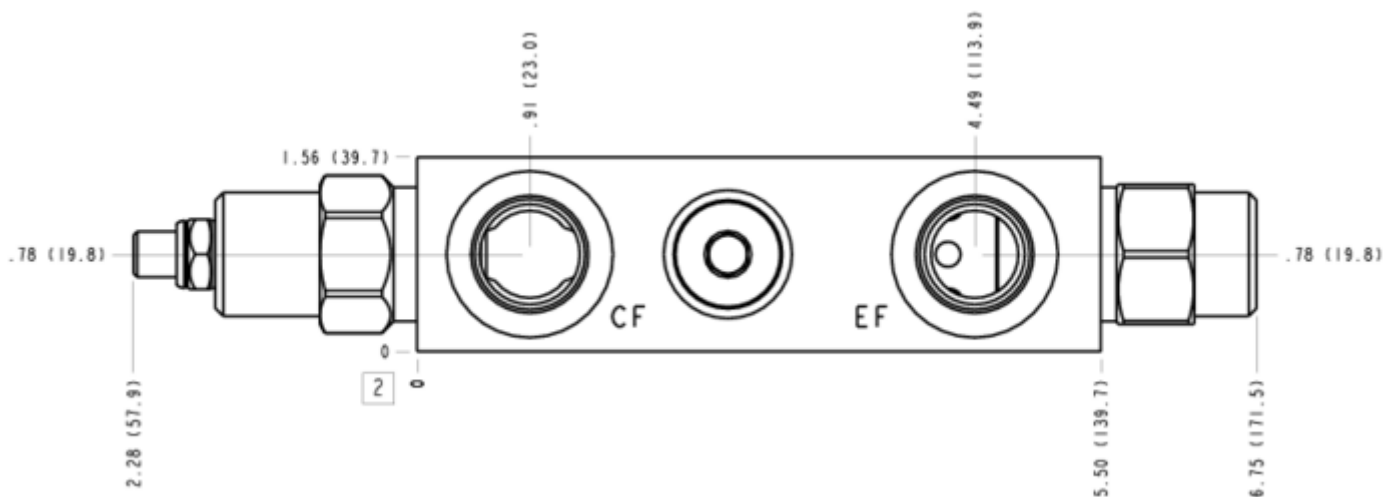
Part	Description	Quantity
A330-006-008*	SAE Plug	1
LHFAXFN	Cartridge	1
NFDDLGN	Cartridge - Primary	1

**MANIFOLD FACES**

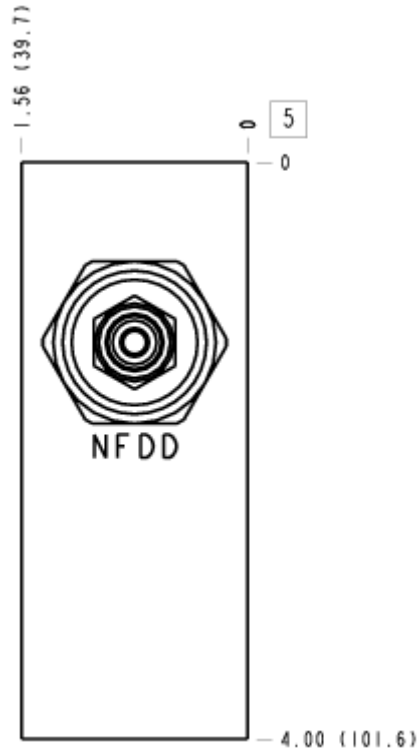
**FACE GRID**

1	2	3	4
5	6	7	8
9	10	11	12

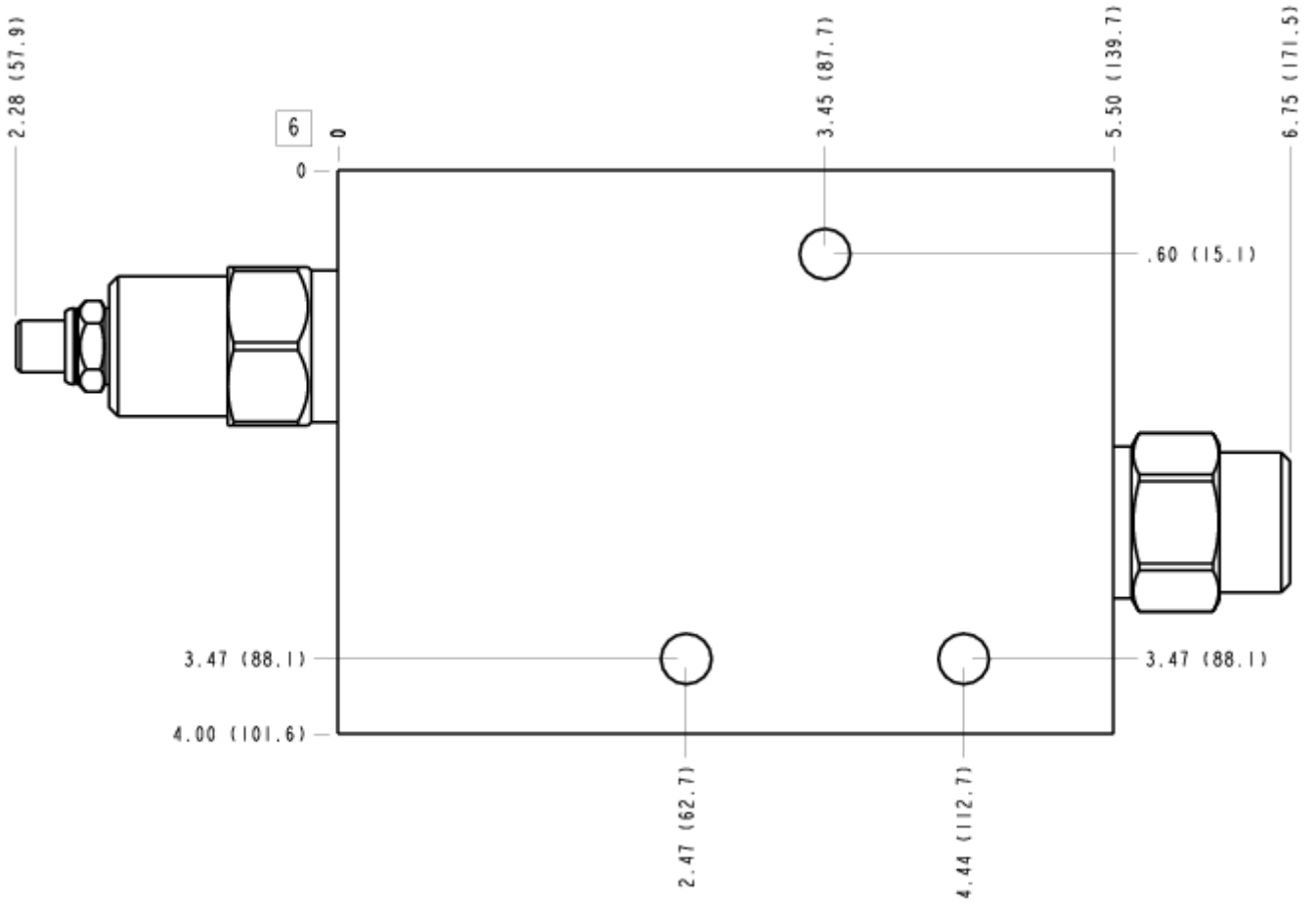
**FACE 2**



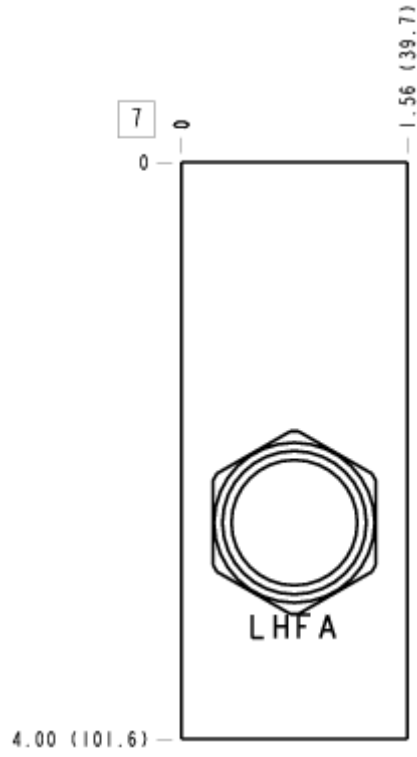
FACE 5



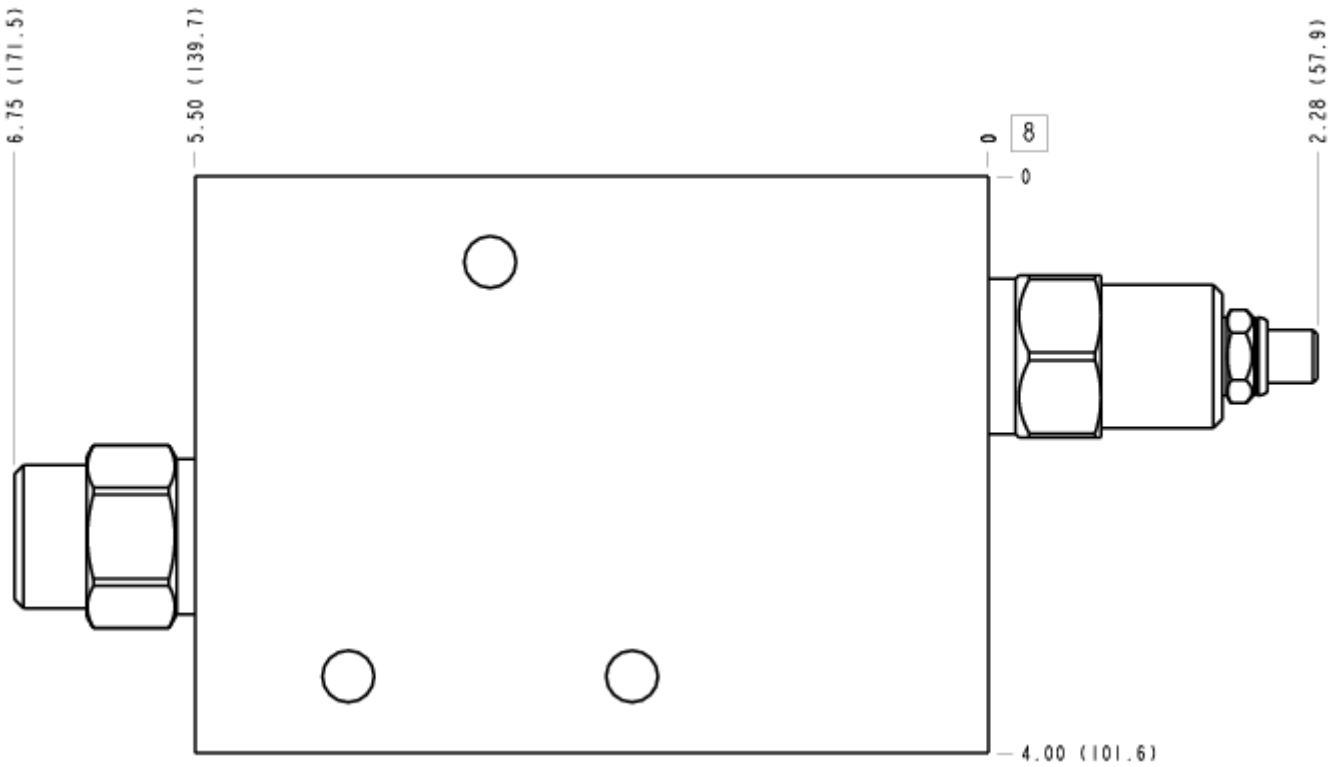
FACE 6



FACE 7



FACE 8



FACE 10

