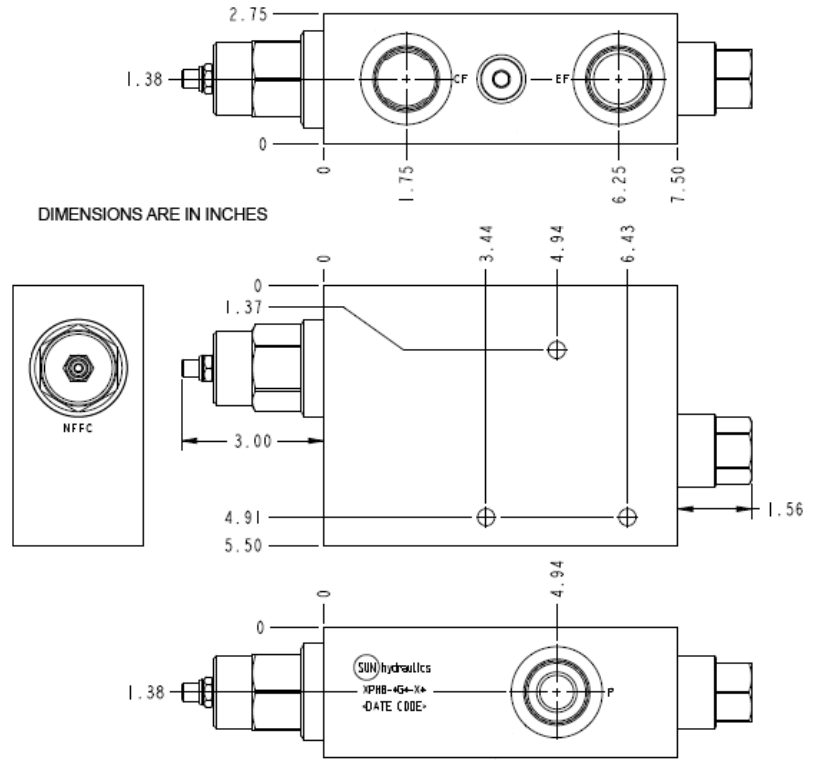


**CONFIGURATION**

|                               |                                   |
|-------------------------------|-----------------------------------|
| L                             |                                   |
| G                             | .56 in. (14,2 mm)                 |
| N                             |                                   |
| X Primary Cartridge           | X (with NFFC primary cartridge, ) |
| Port and Material Designation |                                   |



**TECHNICAL DATA**

|  |         |
|--|---------|
|  |         |
|  | 9,1 mm  |
|  | Through |
|  | 3       |

CONFIGURATION OPTIONS

Model Code Example: XPHBLGNX

(L)

(G)

(N)

L

G .56 in. (14,2 mm)

N

K

V

PRIMARY CARTRIDGE

(X)

X X (with NFFC primary cartridge, )