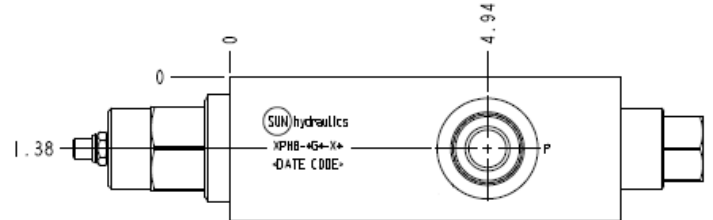
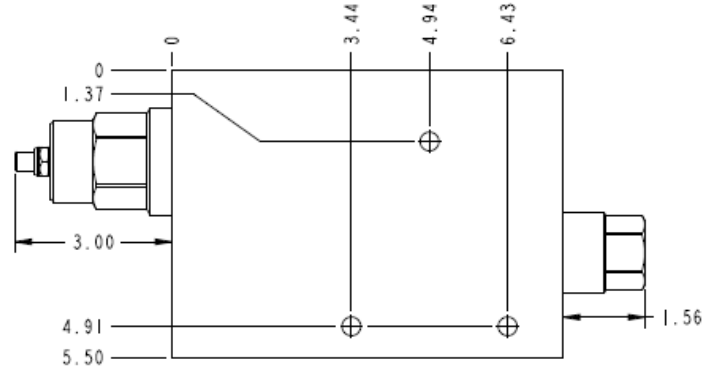
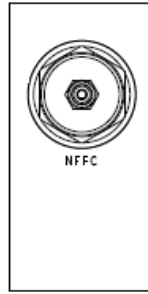


DIMENSIONS ARE IN INCHES



TECHNICAL DATA NOTE: DATA MAY VARY BY CONFIGURATION. SEE CONFIGURATION SECTION.

Body Type	montaje en línea
Capacity	240 L/min.
Mounting Hole Diameter	9,1 mm
Mounting Hole Depth	Through
Mounting Hole Quantity	3

OPTION SELECTION EXAMPLE: XPHBLGNX

CONTROL	(L) MAXIMUM ORIFICE DIAMETER	(G) SEAL MATERIAL	(N)
L Standard Screw Adjustment	G .56 in. (14.2 mm)	N Buna-N	
K manilla		V Viton	
PRIMARY CARTRIDGE			(X)
X X (with NFFC primary cartridge, Totalmente ajustable aguja válvula)			