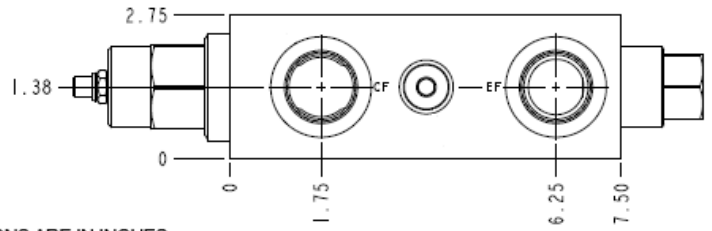
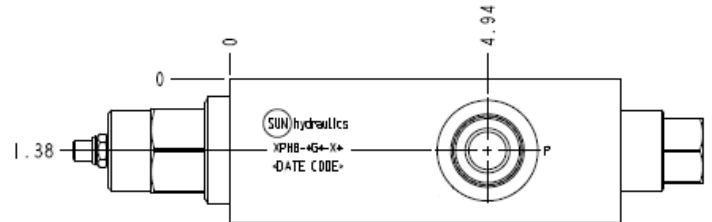
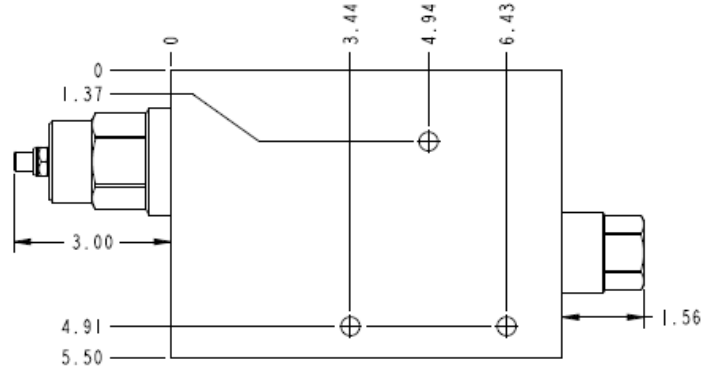
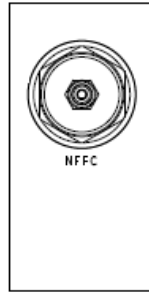


**CONFIGURATION**

L	
G	.56 in. (14,2 mm)
N	
X Primary Cartridge	X (with NFFC primary cartridge, )
Port and Material Designation	



DIMENSIONS ARE IN INCHES



**TECHNICAL DATA** NOTE: DATA MAY VARY BY CONFIGURATION. SEE CONFIGURATION SECTION.

	240 L/min.
	9,1 mm
	Through
	3

**OPTION SELECTION EXAMPLE: XPHBLGNX**

(L)

(G)

(N)

**L**

**G**

.56 in. (14.2 mm)

**N**

K

V

PRIMARY CARTRIDGE

(X)

**X**

X (with NFFC primary cartridge, )