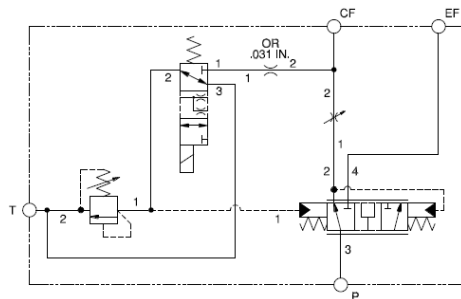
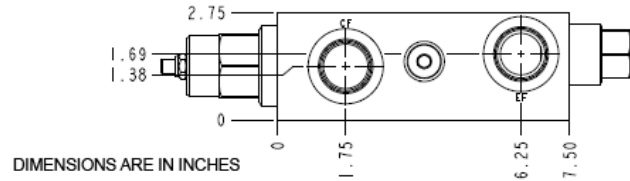


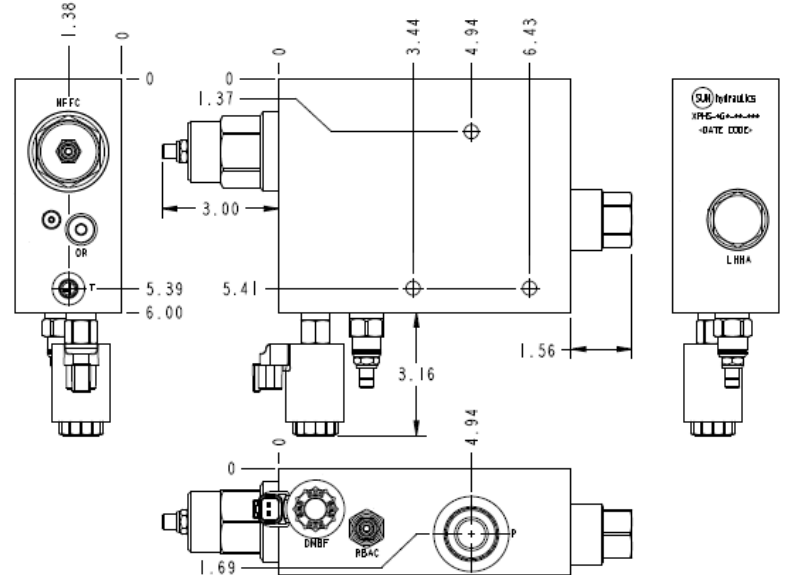
A - Normally Open 1 to 2



N - Normally Open 2 to 3



DIMENSIONS ARE IN INCHES



This assembly provides an efficient way to supply auxiliary hydraulic power to various systems. The assembly divides the inlet flow of Port P into a priority flow to port CF with excess flow to port EF, with ON/OFF control provided by the FLeX Series solenoid-operated directional valve. With the FLeX valve energized, the priority flow to CF is controlled via the adjustable needle valve. Maximum pressure to port CF can be independently adjusted with the relief. When not energized, all the flow will be diverted from port CF at 100 psi (7 bar) to port EF. The system will reach maximum pressure at maximum flow.

**TECHNICAL DATA** NOTE: DATA MAY VARY BY CONFIGURATION. SEE CONFIGURATION SECTION.

Body Type	Line mount
Mounting Hole Diameter	.36 in.
Mounting Hole Depth	Through
Mounting Hole Quantity	3

- NOTES:**
- **Important:** Carefully consider the maximum system pressure. The pressure rating of the manifold is dependent on the manifold material, with the port type/size a secondary consideration. Manifolds constructed of aluminum are not rated for pressures higher than 3000 psi (210 bar), regardless of the port type/size specified.
  - For detailed information regarding the cartridges contained in this assembly, click on the models codes shown in the Included Components tab.

**CONFIGURATION OPTIONS**

Model Code Example: XPHSLGNNM

CONTROL	(L) MAXIMUM ORIFICE DIAMETER	(G) SEAL MATERIAL	(N)
L Standard Screw Adjustment	G .56 in. (14,2 mm)	N Buna-N	
K Handknob		V Viton	

**INCLUDED COMPONENTS**

Part	Description	Quantity
280-039-031*	Orifice	1
A330-006-002*	SAE Plug	1
A330-006-006*	SAE Plug	1
A330-006-010*	SAE Plug	1
DMBFXNN	Cartridge	1
LHHAXFN	Cartridge	1
NFFCLGN	Cartridge - Primary	1
RBACLAN	Cartridge	1