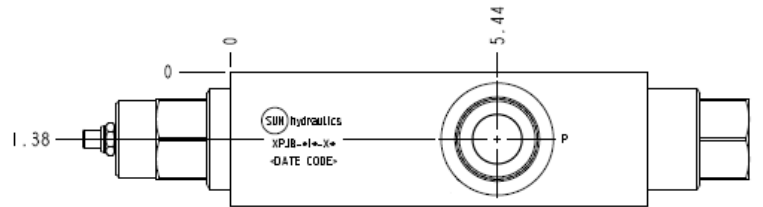
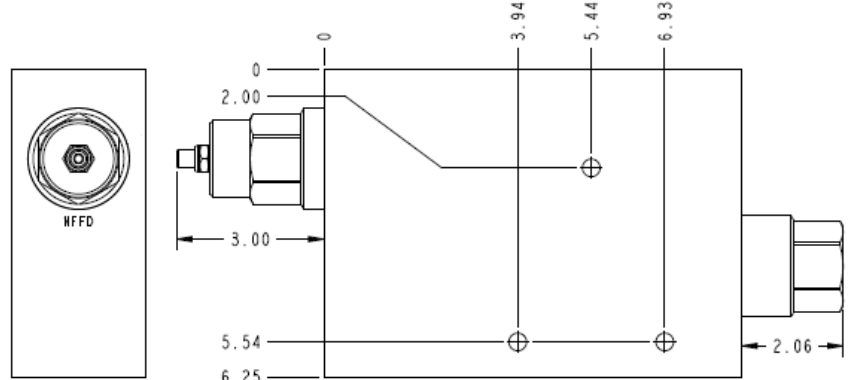


DIMENSIONS ARE IN INCHES



TECHNICAL DATA NOTE: DATA MAY VARY BY CONFIGURATION. SEE CONFIGURATION SECTION.

Body Type	montaje en línea
Capacity	480 L/min.
Mounting Hole Diameter	9,1 mm
Mounting Hole Depth	Through
Mounting Hole Quantity	3

OPTION SELECTION EXAMPLE: XPJBLINXN

CONTROL		(L) MAXIMUM ORIFICE DIAMETER	(I) SEAL MATERIAL	(N)	
L	Standard Screw Adjustment	I	.85 in. (21.6 mm)	N	Buna-N
K	manilla			V	Viton
PRIMARY CARTRIDGE				(X)	
X	X (with NFFD primary cartridge, Totalmente ajustable aguja válvula)				

INCLUDED COMPONENTS

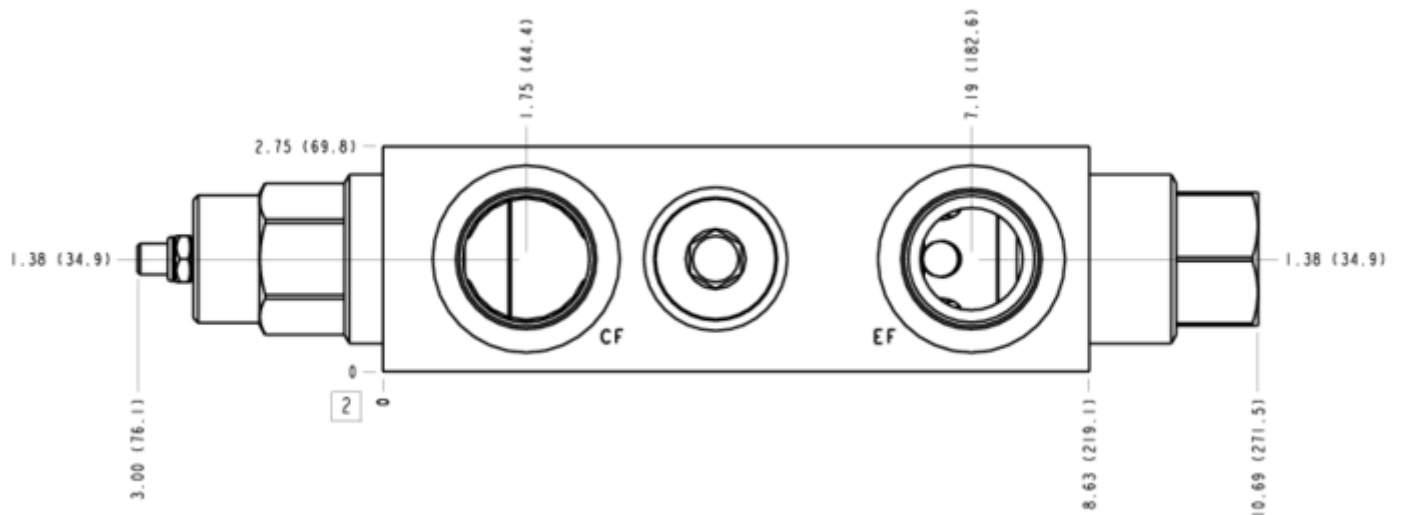
Part	Description	Quantity
A330-006-016*	SAE Plug	1
LHJAXFN	Cartridge	1
NFFDLIN	Cartridge - Primary	1

MANIFOLD FACES

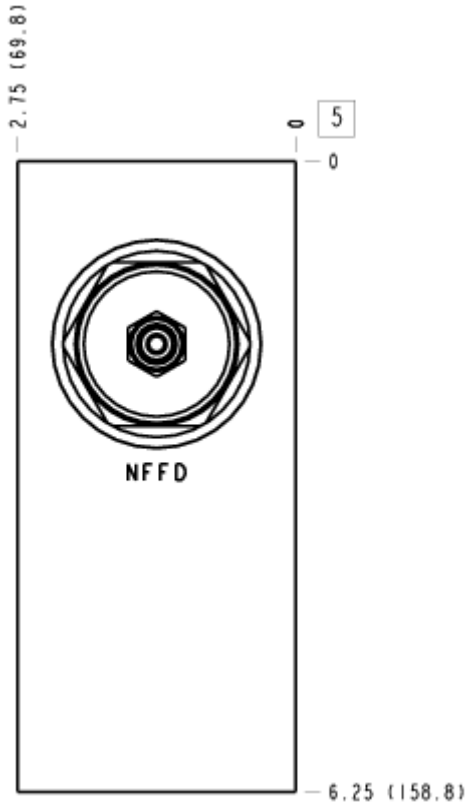
FACE GRID

1	2	3	4
5	6	7	8
9	10	11	12

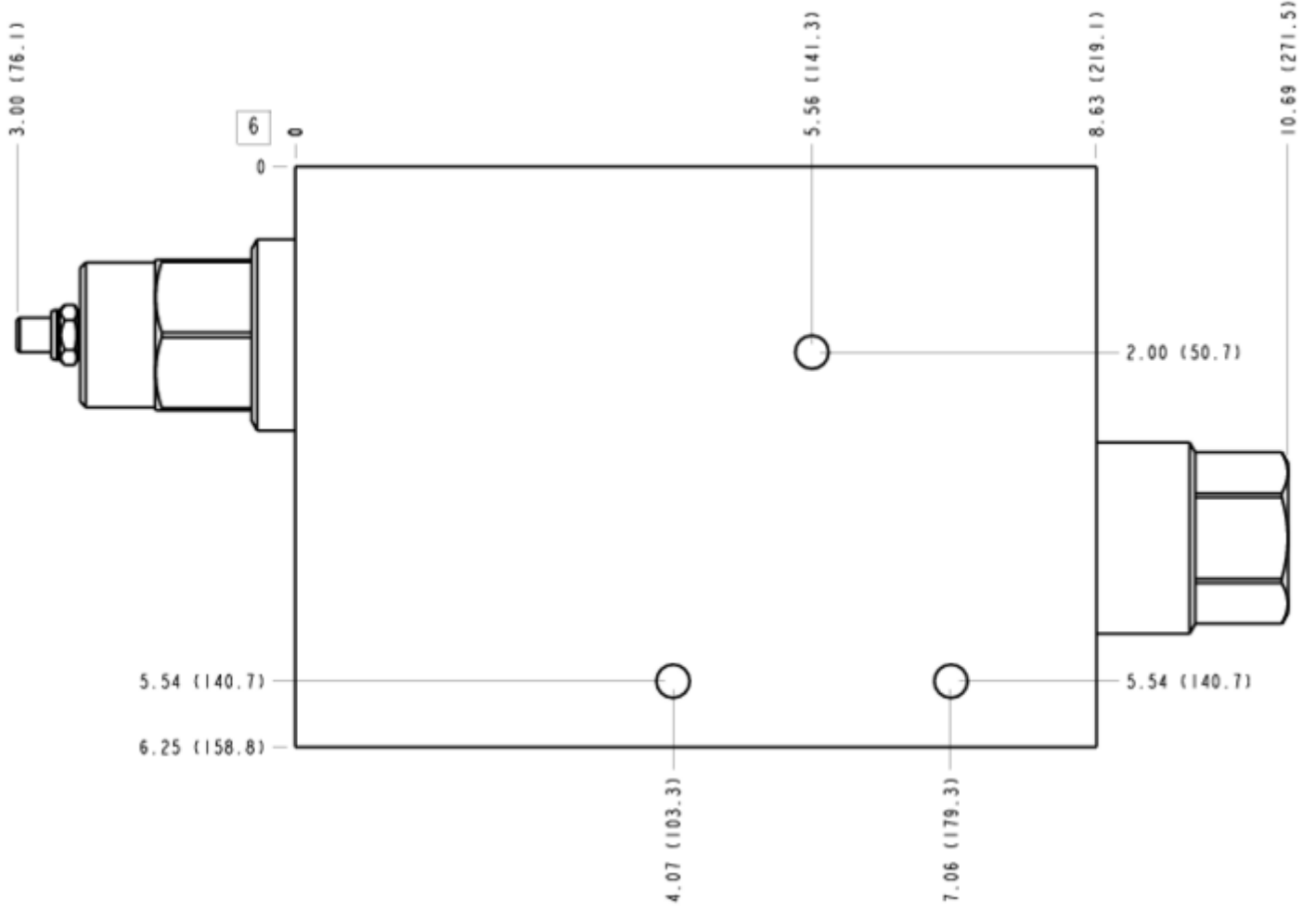
FACE 2



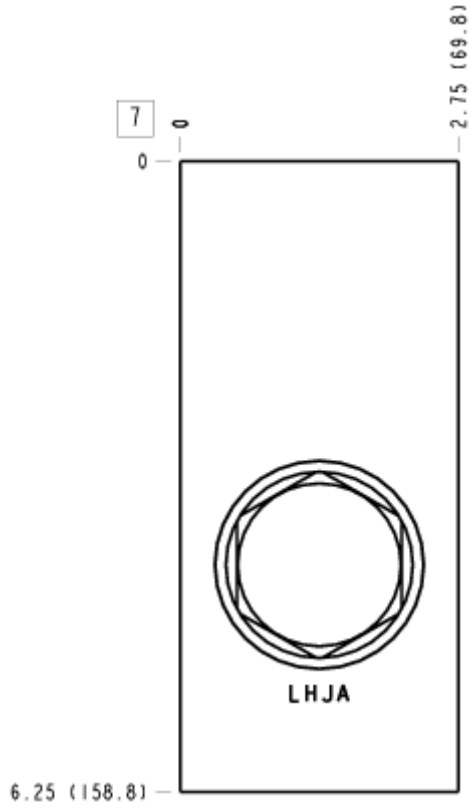
FACE 5



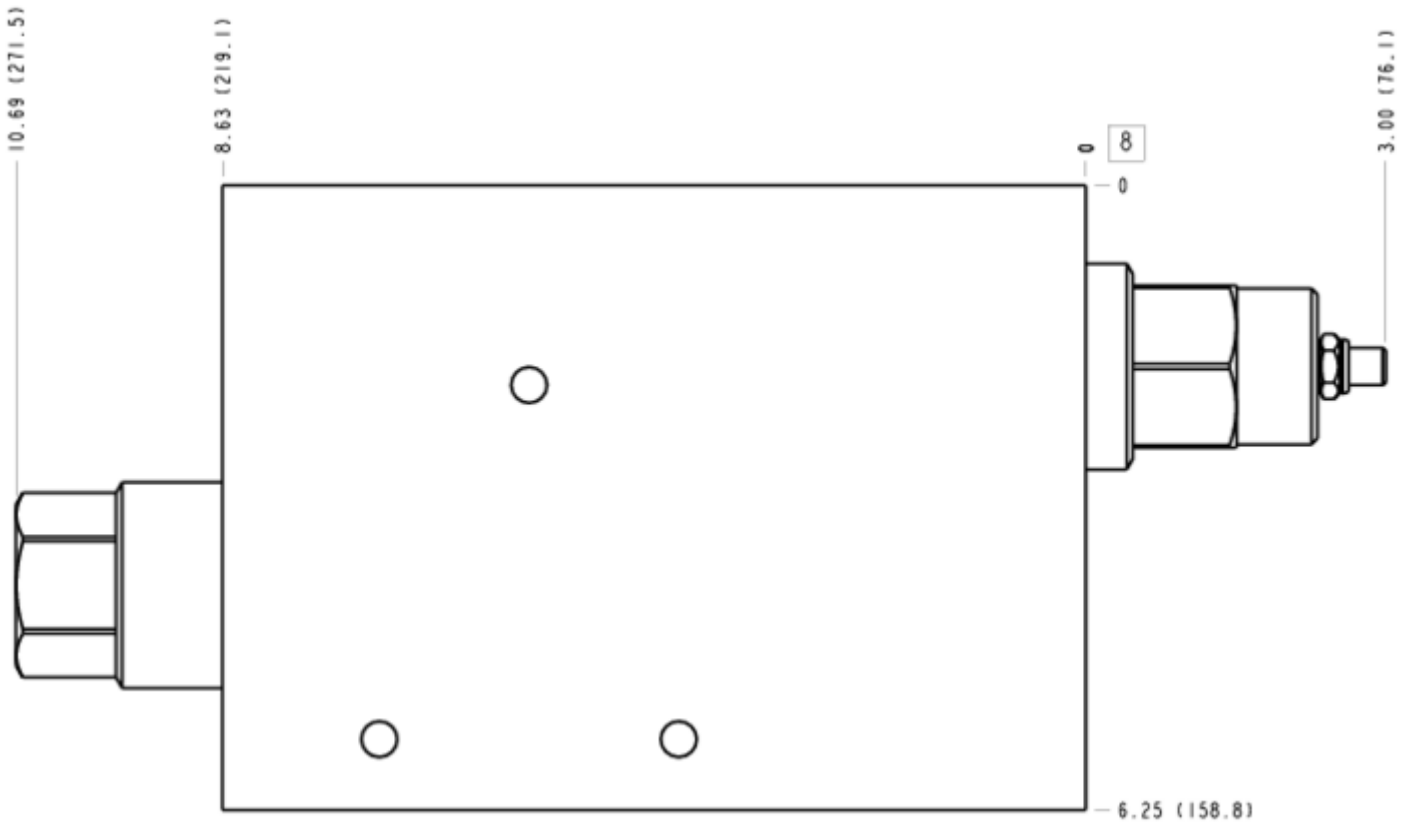
FACE 6



FACE 7



FACE 8



FACE 10

