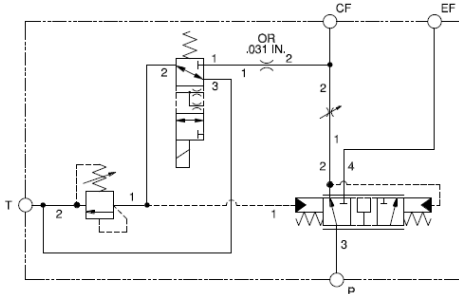
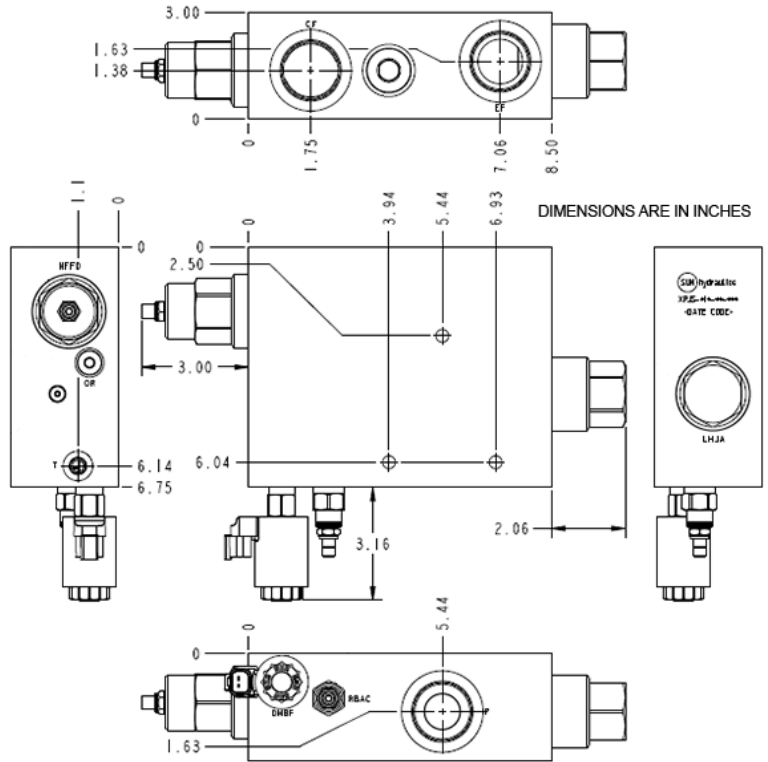


A - Normally Open 1 to 2



N - Normally Open 2 to 3



TECHNICAL DATA NOTE: DATA MAY VARY BY CONFIGURATION. SEE CONFIGURATION SECTION.

	9,1 mm
	Through
	3

CONFIGURATION OPTIONS

Model Code Example: XPJSLINNN

(L)

(I)

(N)

L	I .85 in. (21,6 mm)	N
		V

INCLUDED COMPONENTS

Part	Description	Quantity
280-039-031*	Orifice	1
A330-006-002*	SAE Plug	1
A330-006-006*	SAE Plug	1
A330-006-016*	SAE Plug	1
DMBFXNN	Cartridge	1
LHJAXFN	Cartridge	1
NFFDLIN	Cartridge - Primary	1
RBACLAN	Cartridge	1