

This assembly consists of a direct-acting relief cartridge which are normally closed, pressure-limiting valves used to protect hydraulic components from pressure transients. When the pressure at the inlet (port 1) reaches the valve setting, the valve starts to open to tank (port 2), throttling flow to limit the pressure rise. These valves are smooth and quiet, essentially zero leak, dirt tolerant, immune to silting and are very fast. The 2-way, 2-position solenoid directional valve provides a means to unload (bypass the relief valve) the system.

TECHNICAL DATA NOTE: DATA MAY VARY BY CONFIGURATION. SEE CONFIGURATION SECTION.

Body Type	Line mount
Capacity	.25 gpm
Mounting Hole Diameter	.34 in.
Mounting Hole Thread	.250-20 UNC - 2B in.
Mounting Hole Depth	Through
Mounting Hole Quantity	1

- NOTES:**
- **Important:** Carefully consider the maximum system pressure. The pressure rating of the manifold is dependent on the manifold material, with the port type/size a secondary consideration. Manifolds constructed of aluminum are not rated for pressures higher than 3000 psi (210 bar), regardless of the port type/size specified.
 - For detailed information regarding the cartridges contained in this assembly, click on the models codes shown in the Included Components tab.

OPTION SELECTION EXAMPLE: XRAGLANFI224

CONTROL	(L) ADJUSTMENT RANGE	(A) SEAL MATERIAL	(N)
L Standard Screw Adjustment	A 25 - 3000 psi (1,7 - 210 bar), 1000 psi (70 bar) Standard Setting	N Buna-N	
C Tamper Resistant - Factory Set	B 25 - 1500 psi (1,7 - 105 bar), 1000 psi (70 bar) Standard Setting	V Viton	
K Handknob	D 25 - 800 psi (1,7 - 55 bar), 400 psi (28 bar) Standard Setting		
W Hex Wrench Adjustment	E 25 - 400 psi (1,7 - 28 bar), 200 psi (14 bar) Standard Setting		
Y Tri-Grip Handknob			

INCLUDED COMPONENTS

Part	Description	Quantity
DTAFMHN224	Cartridge	1
RBACLAN	Cartridge - Primary	1

TECHNICAL FEATURES

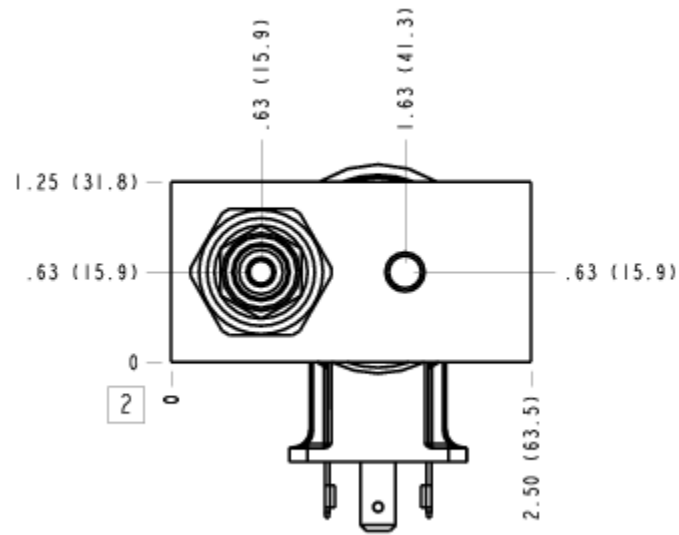
- Now available with FLeX Series solenoid valves. See CONFIGURATION section, SOLENOID DESIGNATION to specify.
- Back pressure on the tank port (port 2) is directly additive to the valve setting at a 1:1 ratio.
- Suitable for use in load holding applications.
- This assembly provides protection for pumps and motors from pressure transients due to sudden load changes, especially variable displacement pumps, since the displacement mechanism is sometimes too slow to catch these pressure transients.
- The assembly's direct acting relief valves exhibit rapid response characteristics that minimize pressure overshoot and also provide low reseal leakage (less than 5 drops/min (0,3 cc/min) @ 85% of cracking pressure).
- The seals on the adjust screw are exposed to system pressure which means this valve can only be adjusted when the pressure is removed. The setting procedure is; check the setting, remove the pressure, adjust the valve, check the new setting.

MANIFOLD FACES

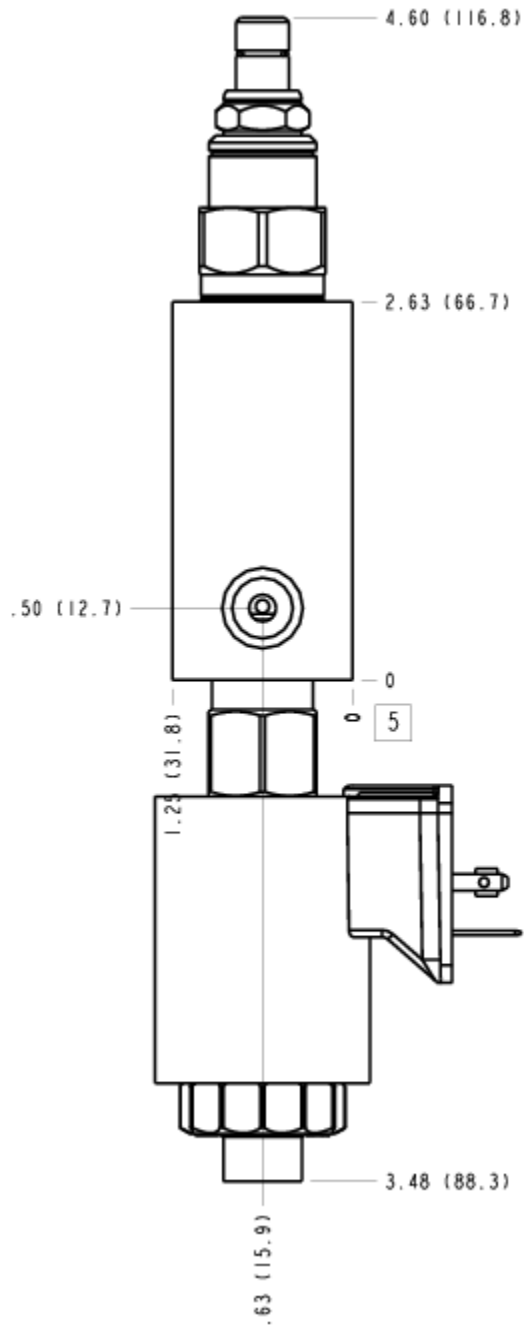
FACE GRID

1	2	3	4
5	6	7	8
9	10	11	12

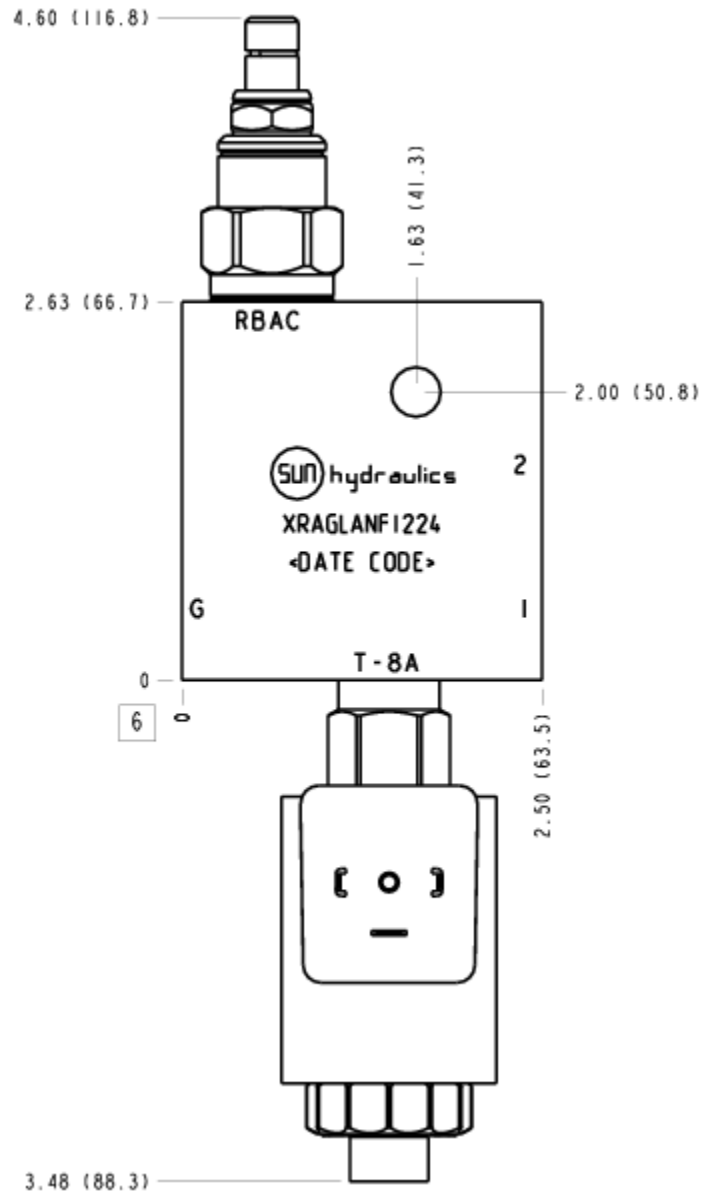
FACE 2



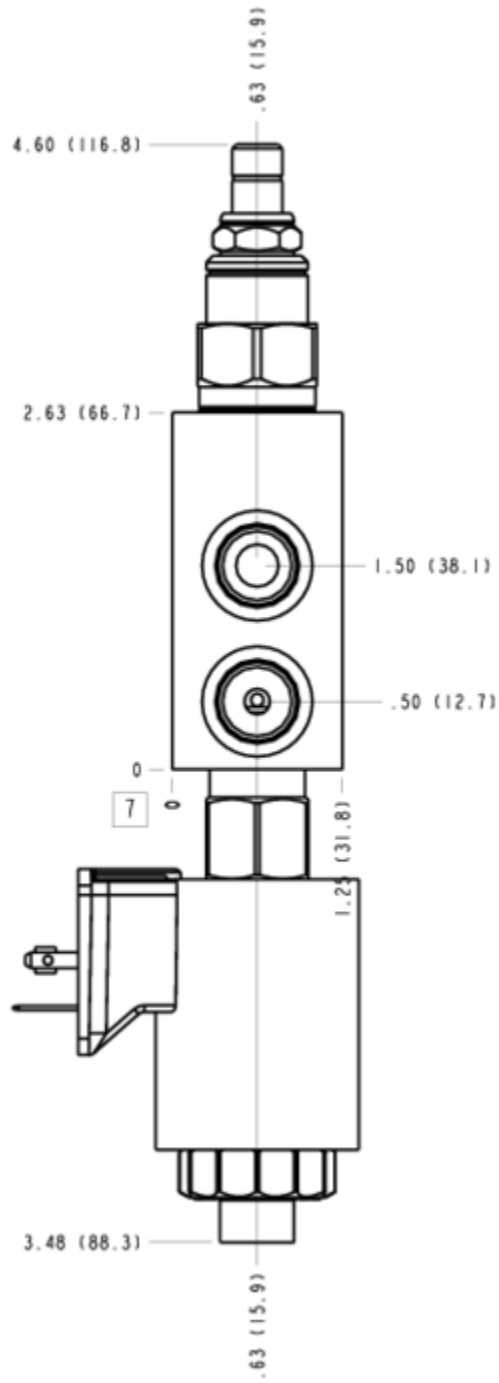
FACE 5



FACE 6



FACE 7



FACE 10

