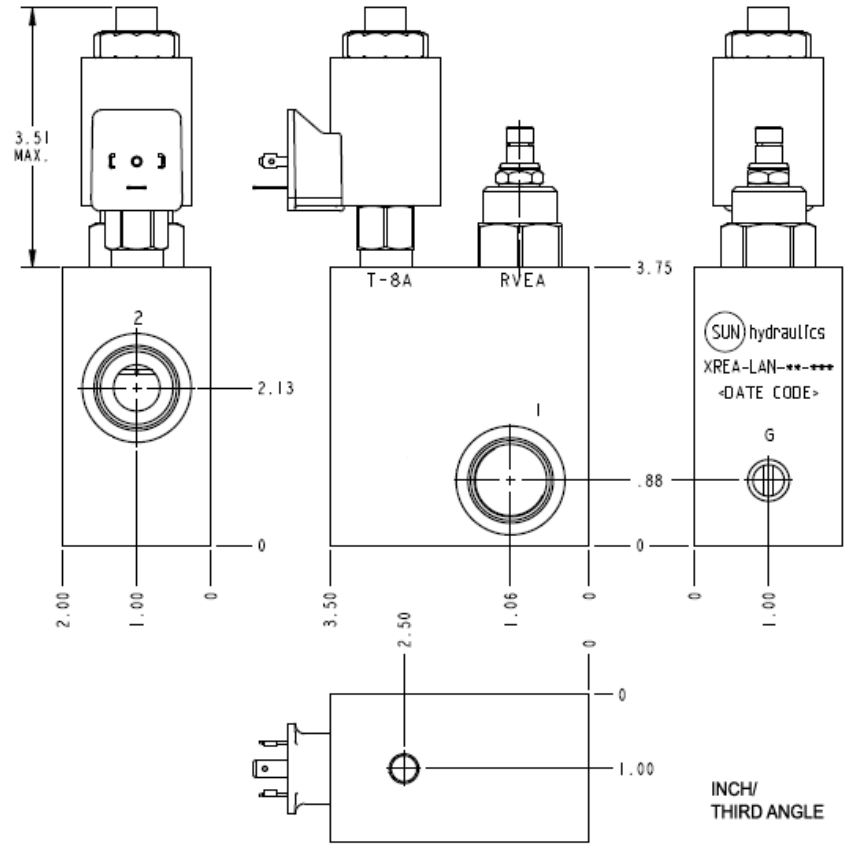


CONFIGURATION

L	Control	Standard Screw Adjustment
A	Adjustment Range	100 - 3000 psi (7 - 210 bar), 1000 psi (70 bar) Standard Setting
N	Seal Material	Buna-N
F	Solenoid Designation	740 Coil-Normally Open (with RVEA primary cartridge, De venteo, pilot-operated, pistón balanceado alivio válvula.)
K	Port and Material Designation	Ports 1 & 2 — SAE 10; Port G — 1/4" NPTF; Mounting Holes — .375 - 16UNC x .62 DP; Aluminum
224	Coil	DIN 43650 4 pin (Hirschman) 24 VDC



TECHNICAL DATA

Body Type	Line mount
Capacity	120 L/min.

OPTION SELECTION EXAMPLE: XREALANFK224

CONTROL	(L) ADJUSTMENT RANGE	(A) SEAL MATERIAL	(N)
L Standard Screw Adjustment	A 100 - 3000 psi (7 - 210 bar), 1000 psi (70 bar) Standard Setting	N Buna-N	
C Tamper Resistant - Factory Set	B 50 - 1500 psi (3,5 - 105 bar), 1000 psi (70 bar) Standard Setting	V Viton	
W Hex Wrench Adjustment	C 150 - 6000 psi (10,5 - 420 bar), 1000 psi (70 bar) Standard Setting		
Y manilla de tres agarres	D 25 - 800 psi (1,7 - 55 bar), 400 psi (28 bar) Standard Setting		
	E 25 - 400 psi (1,7 - 28 bar), 200 psi (14 bar) Standard Setting		
	N 60 - 800 psi (4 - 55 bar), 400 psi (28 bar) Standard Setting		
	Q 60 - 400 psi (4 - 28 bar), 200 psi (14 bar) Standard Setting		
	W 150 - 4500 psi (10,5 - 315 bar), 1000 psi (70 bar) Standard Setting		

INCLUDED COMPONENTS

Part	Description	Quantity
DTAFMHN224	Cartridge	1
RVEALAN	Cartridge - Primary	1