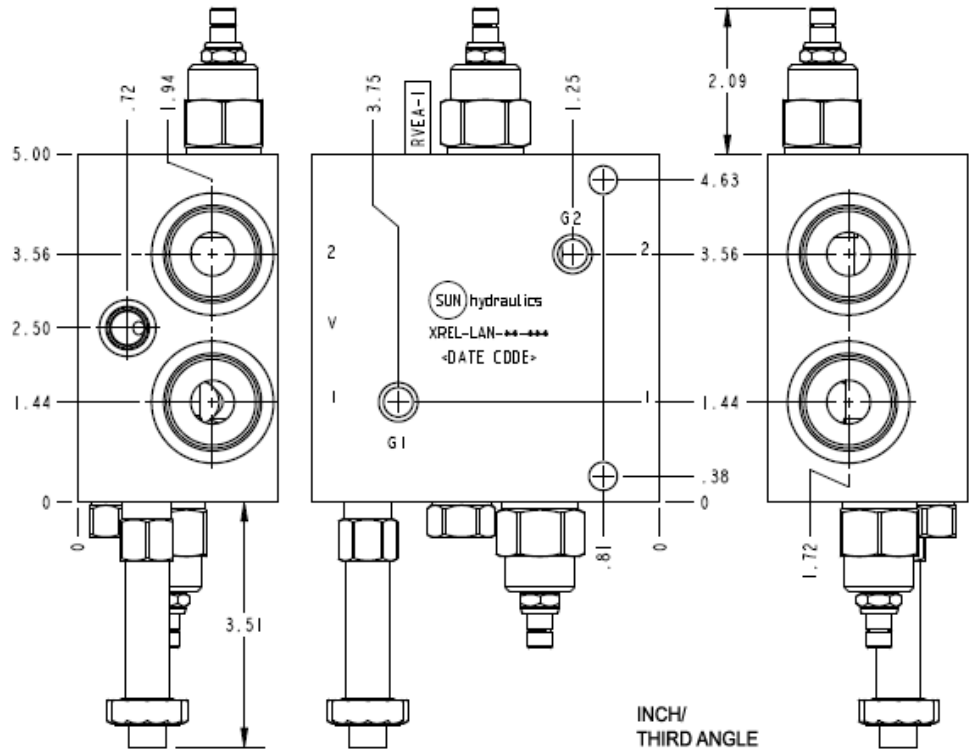


CONFIGURATION

L	Control	Standard Screw Adjustment
A	Adjustment Range	100 - 3000 psi (7 - 210 bar), 1000 psi (70 bar) Standard Setting
N	Seal Material	Buna-N
F	Solenoid Designation	740 Coil-Normally Open (with RVEA primary cartridge, De venteo, pilot-operated, pistón balanceado alivio válvula)
M	Port and Material Designation	Ports 1 & 2 — SAE 16; Gage Ports — SAE 6; Port V — SAE 6; Aluminum
912	Coil	Deutsch DT04-2P 12 VDC



TECHNICAL DATA

Body Type	montaje en línea
Mounting Hole Diameter	10,7 mm
Mounting Hole Depth	Through
Mounting Hole Quantity	2

CONFIGURATION OPTIONS

Model Code Example: XRELLANFM912

CONTROL	(L) ADJUSTMENT RANGE	(A) SEAL MATERIAL	(N)
L Standard Screw Adjustment	A 100 - 3000 psi (7 - 210 bar), 1000 psi (70 bar) Standard Setting	N Buna-N	
	J 25 - 1500 psi (1,7 - 105 bar), 1000 psi (70 bar) Standard Setting	V Viton	

INCLUDED COMPONENTS

Part	Description	Quantity
CSABXXN	Cartridge	1
DTAFMHN912	Cartridge	1
RVEALAN	Cartridge - Primary	2