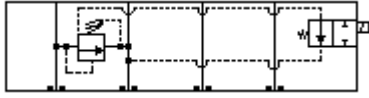


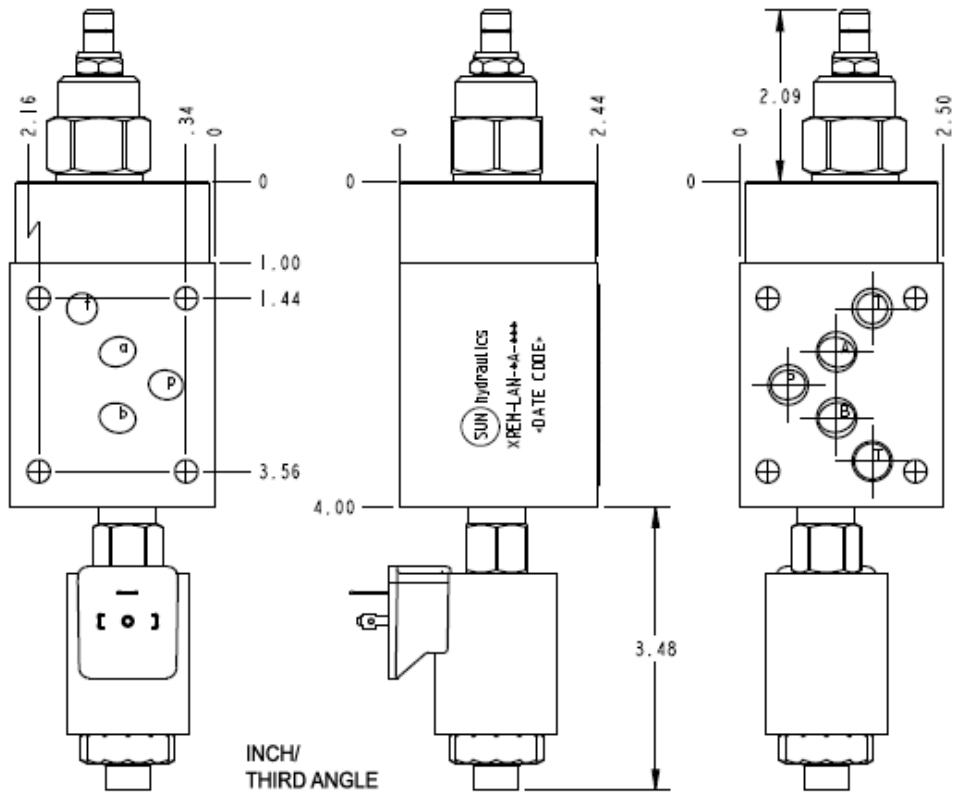
Normally Closed



Normally Open

CONFIGURATION

L	
A	100 - 3000 psi (7 - 210 bar), 1000 psi (70 bar)
N	
F	Solenoid 740 Coil-Normally Open (with Designation RVEA primary cartridge,
	Port and Material Designation
	Coil



INCH/
THIRD ANGLE

TECHNICAL DATA NOTE: DATA MAY VARY BY CONFIGURATION. SEE CONFIGURATION SECTION.

	ISO 05
	120 L/min.
Stack Height	62 mm
()	
	PT

OPTION SELECTION EXAMPLE: XREMLANF

(L)

(A)

(N)

L

A 100 - 3000 psi (7 - 210 bar), 1000 psi (70 bar)

N

V

TECHNICAL FEATURES

- FLeX