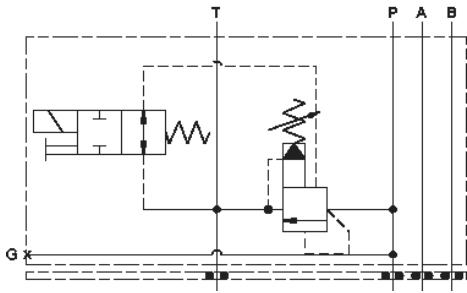
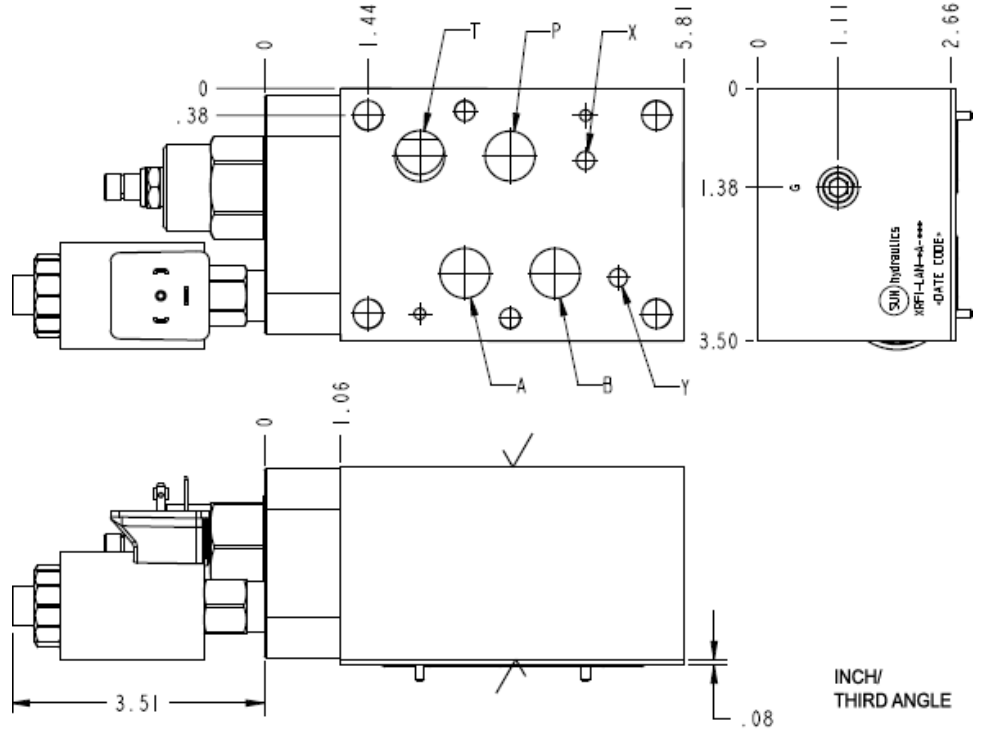


Normally Closed



Normally Open



CONFIGURATION OPTIONS

Model Code Example: XRFILANFA912

CONTROL	(L)	ADJUSTMENT RANGE	(A)	SEAL MATERIAL	(N)
L	Standard Screw Adjustment	A	100 - 3000 psi (7 - 210 bar), 1000 psi (70 bar) Standard Setting	N	Buna-N
C	Tamper Resistant - Factory Set	B	50 - 1500 psi (3,5 - 105 bar), 1000 psi (70 bar) Standard Setting	V	Viton
		C	150 - 6000 psi (10,5 - 420 bar), 1000 psi (70 bar) Standard Setting		
		D	25 - 800 psi (1,7 - 55 bar), 400 psi (28 bar) Standard Setting		
		E	25 - 400 psi (1,7 - 28 bar), 200 psi (14 bar) Standard Setting		
		W	150 - 4500 psi (10,5 - 315 bar), 1000 psi (70 bar) Standard Setting		

INCLUDED COMPONENTS

Part	Description	Quantity
340-003*	Pipe Plug	1
500-001-111*	O-Ring	2
500-001-118*	O-Ring	4
700-006*	Seal Plate	1
811-001-006*	Pin	2
DTAFMHN912	Cartridge	1
RVGALAN	Cartridge - Primary	1