

This valve assembly provides 2 functions. It relieves from pressure (port 1) to tank (port 2) when pressure at port 1 exceeds the setting of the valve. The solenoid control allows the valve to be vented, dropping the pressure to a minimal level. This assembly is available in both normally open option, normally closed option, as well as an empty pilot control cavity. The normally open option means the pressure is at a low level until the solenoid is energized. The normally closed option means the pressure is at a high level until the solenoid is energized.

TECHNICAL DATA NOTE: DATA MAY VARY BY CONFIGURATION. SEE CONFIGURATION SECTION.

Body Type	Line mount
Capacity	60 gpm
Mounting Hole Quantity	2

- NOTES:**
- 1" Code 61 Flange Mounting Hole Data: Inch: 3/8-16 UNC x .88 (22,2 mm) DP, Metric: M10 x 1.5-6H x .88 (22,2 mm) DP
 - 1" Code 62 Flange Mounting Hole Data: Inch: 7/16-14 UNC x 1.06 (26,9 mm) DP, Metric: M12 x 1.75-6H x 1.06 (26,9 mm) DP
 - 1 1/4" Code 61 Flange Mounting Hole Data: Inch: 7/16-14 UNC x 1.13 (28,6 mm) DP, Metric: M12 x 1.75-6H x 1.13 (28,6 mm) DP
 - Flange Mounting Hole Data: Inch: 1/2-13 UNC x 1.00 (25,4 mm) DP, Metric: M14 x 2.0-6H x 1.00 (25,4 mm) DP
 - **Important:** Carefully consider the maximum system pressure. The pressure rating of the manifold is dependent on the manifold material, with the port type/size a secondary consideration. Manifolds constructed of aluminum are not rated for pressures higher than 3000 psi (210 bar), regardless of the port type/size specified.
 - For detailed information regarding the cartridges contained in this assembly, click on the models codes shown in the Included Components tab.

OPTION SELECTION EXAMPLE: XRGALANFM224

CONTROL	(L) ADJUSTMENT RANGE	(A) SEAL MATERIAL	(N)
L Standard Screw Adjustment	A 100 - 3000 psi (7 - 210 bar), 1000 psi (70 bar) Standard Setting	N Buna-N	V Viton

INCLUDED COMPONENTS

Part	Description	Quantity
DTAFMHN224	Cartridge	1
RVGALAN	Cartridge - Primary	1

TECHNICAL FEATURES

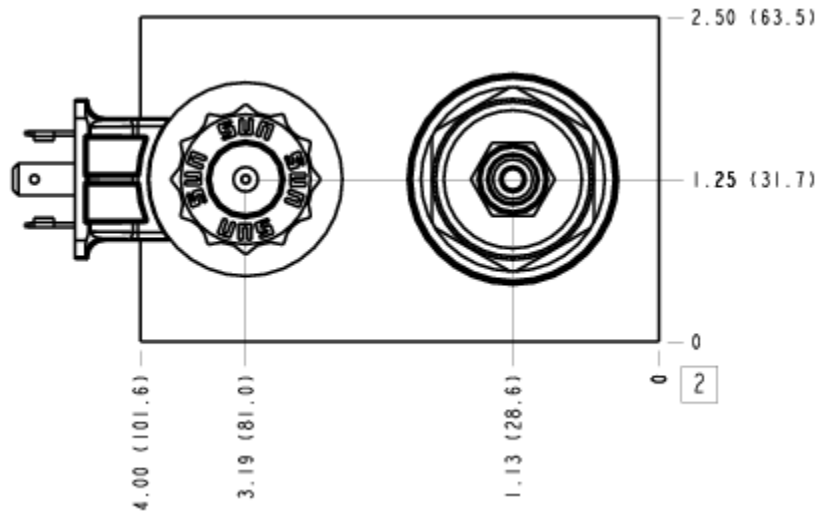
- Not suitable for use in load holding applications due to spool leakage.
- Back pressure on the tank port (port 2) is directly additive to the valve setting at a 1:1 ratio.
- This assembly is well suited to loading and unloading a pump.
- The nature of a vented relief is that it brings the pressure up in a smooth manner. Unloading is abrupt.
- Now available with FLeX Series solenoid valves. See CONFIGURATION section, SOLENOID DESIGNATION to specify.

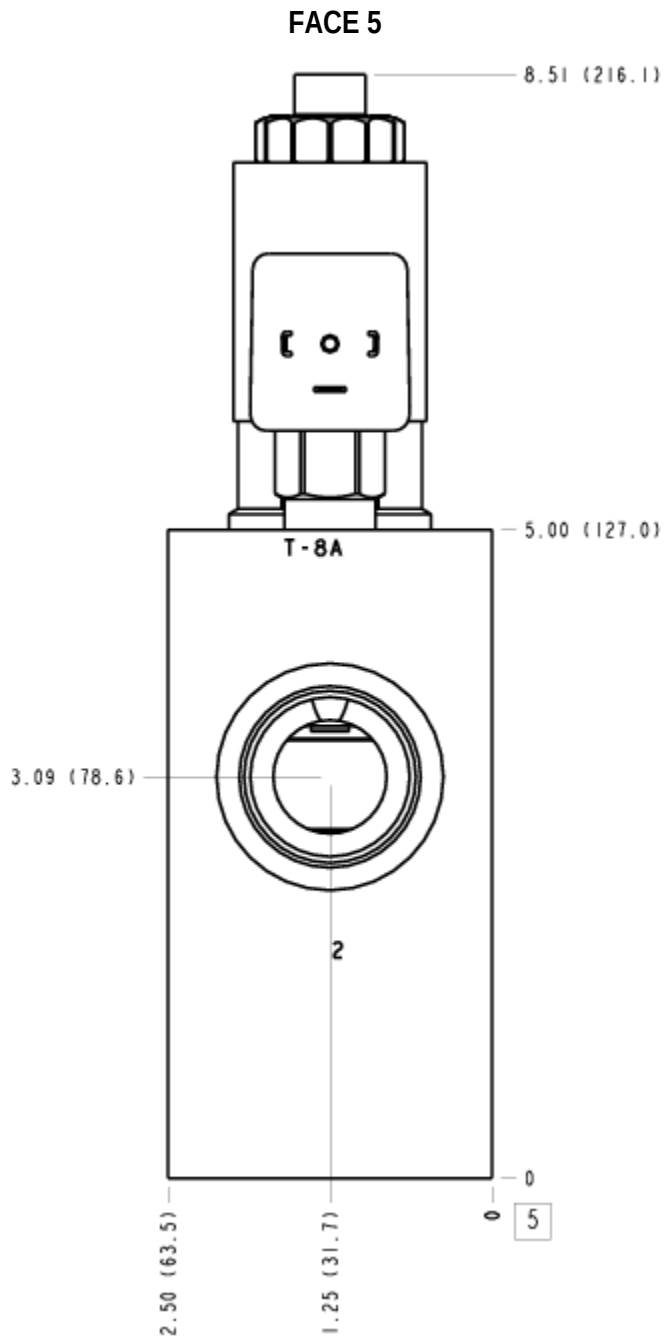
MANIFOLD FACES

FACE GRID

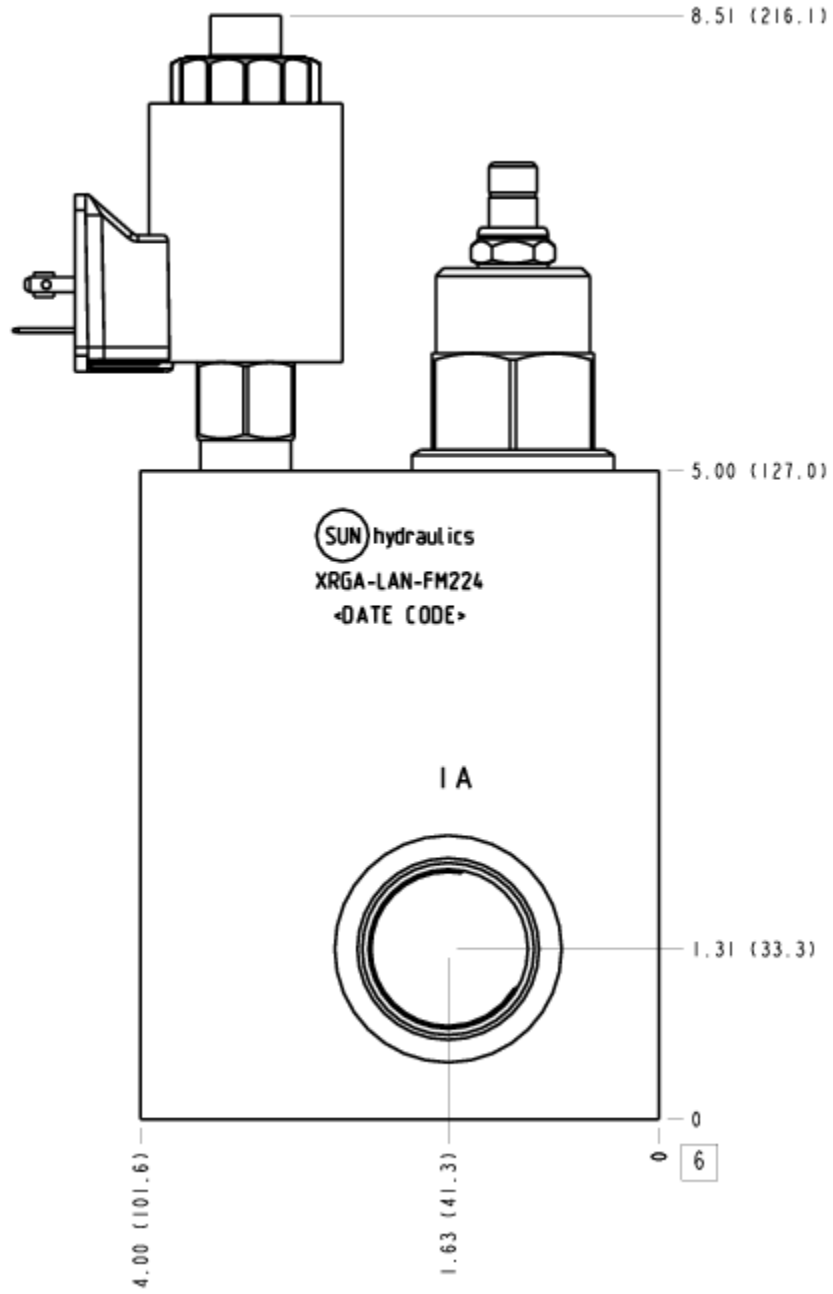
1	2	3	4
5	6	7	8
9	10	11	12

FACE 2

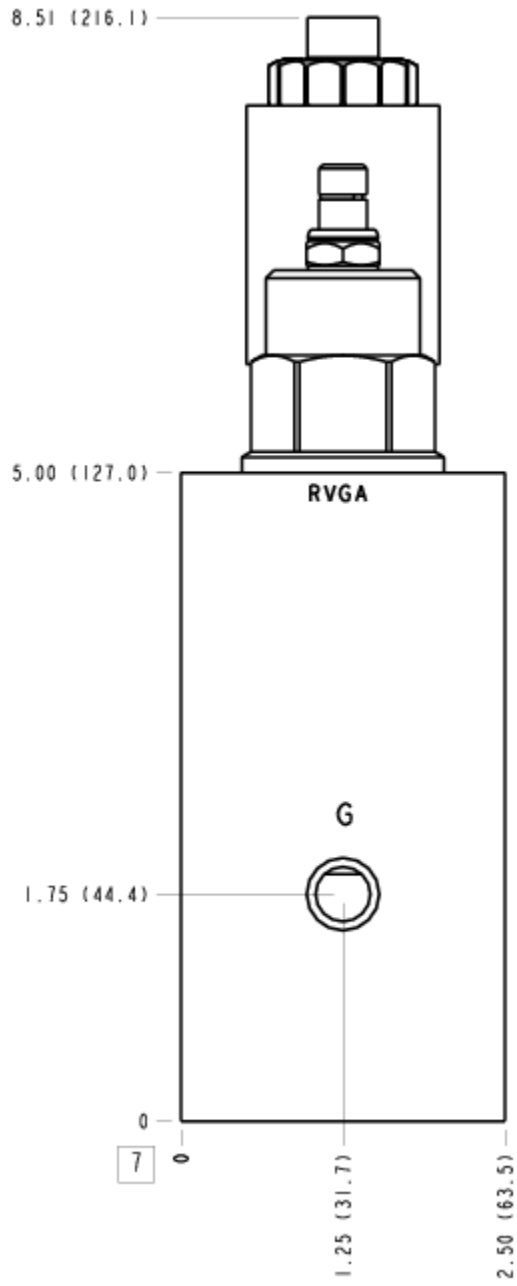




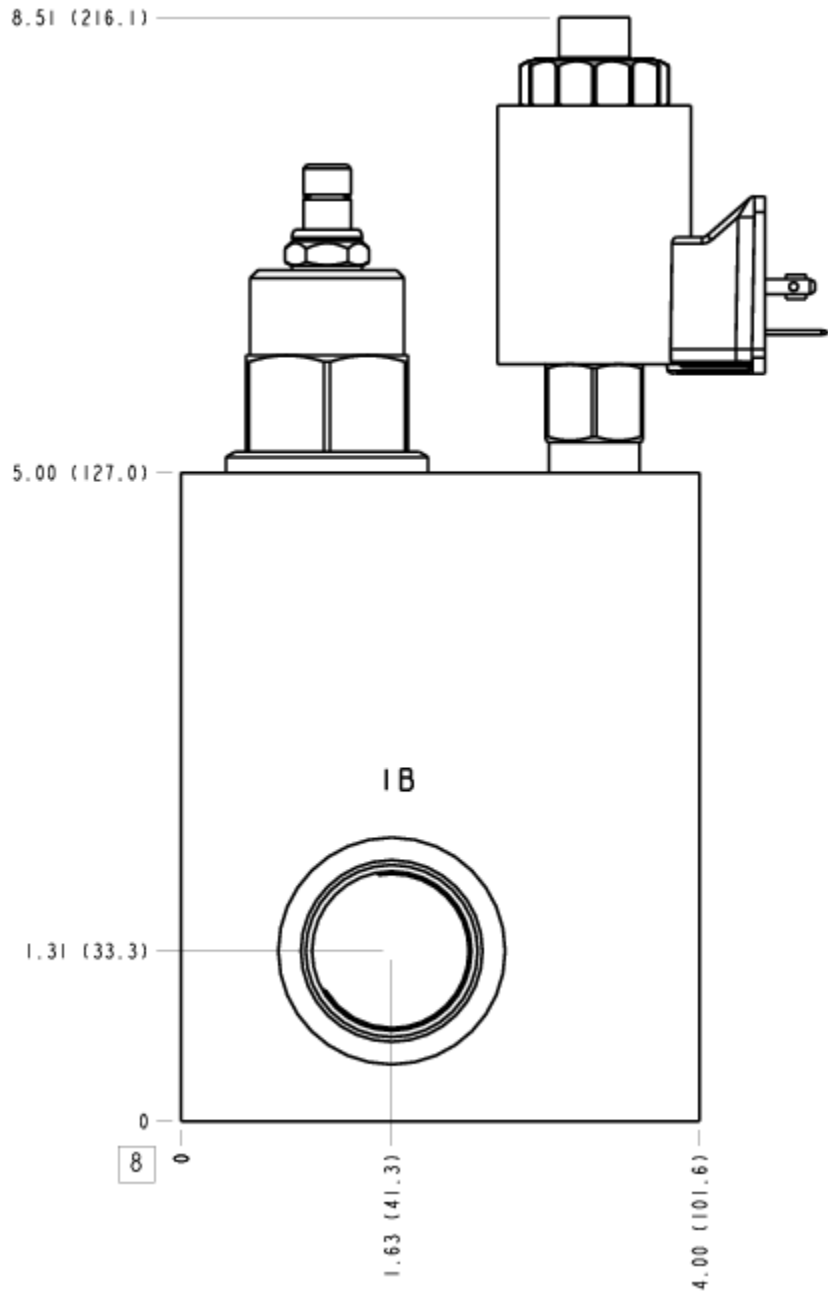
FACE 6



FACE 7



FACE 8



FACE 10

