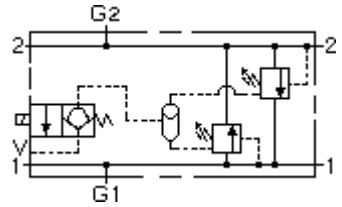
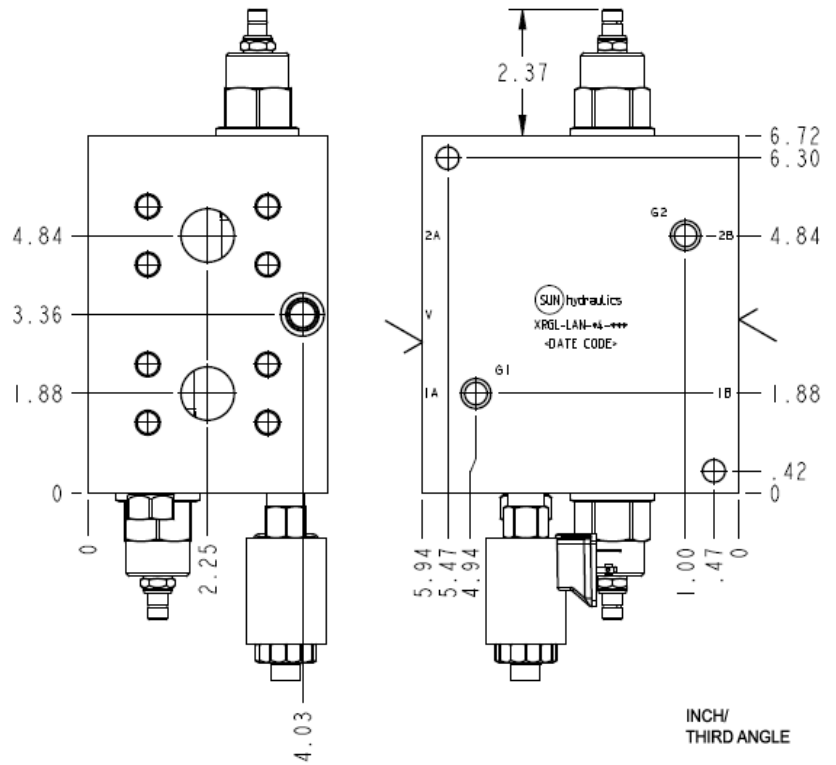


Solenoid Designation: Normally Open



Solenoid Designation: Normally Closed



INCH/  
THIRD ANGLE

**TECHNICAL DATA** NOTE: DATA MAY VARY BY CONFIGURATION. SEE CONFIGURATION SECTION.

Body Type	montaje en línea
Mounting Hole Diameter	10,7 mm
Mounting Hole Depth	Through
Mounting Hole Quantity	2

**CONFIGURATION OPTIONS**

**Model Code Example: XRGLLANFN912**

CONTROL	(L) ADJUSTMENT RANGE	(A) SEAL MATERIAL	(N)
<b>L</b> Standard Screw Adjustment	<b>A</b> 100 - 3000 psi (7 - 210 bar), 1000 psi (70 bar) Standard Setting	<b>N</b> Buna-N	
	<b>J</b> 25 - 1500 psi (1,7 - 105 bar), 1000 psi (70 bar) Standard Setting	<b>V</b> Viton	

**INCLUDED COMPONENTS**

Part	Description	Quantity
CSABXXN	Cartridge	1
DTAFMHN912	Cartridge	1
RVGALAN	Cartridge - Primary	2