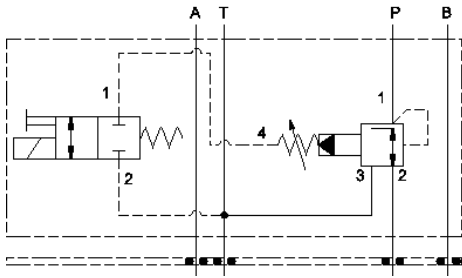
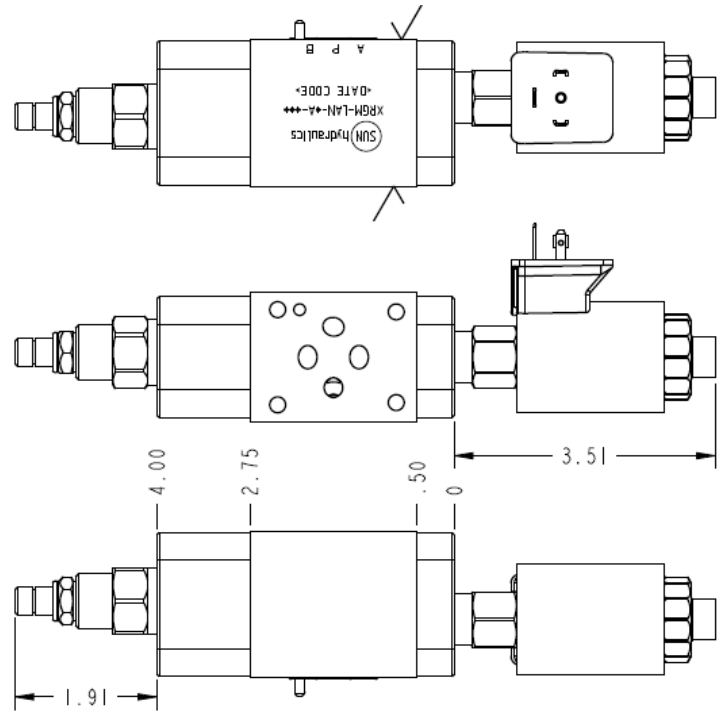


Normally Open



Normally Closed



INCH/
THIRD ANGLE

TECHNICAL DATA NOTE: DATA MAY VARY BY CONFIGURATION. SEE CONFIGURATION SECTION.

| | |
|---------------------------------|-----------------------|
| Body Type | apilables |
| Interface | ISO 03 |
| Body Features | Reducer/reliever on P |
| Seal Plate Included (see notes) | No |
| Stack Height | 44,5 mm |

CONFIGURATION OPTIONS

Model Code Example: XRGM LANFA912

| CONTROL | (L) | ADJUSTMENT RANGE | (A) | SEAL MATERIAL | (N) |
|----------|---------------------------|------------------|--|---------------|--------|
| L | Standard Screw Adjustment | A | 100 - 3000 psi (7 - 210 bar), 200 psi (14 bar) Standard Setting | N | Buna-N |
| | | B | 50 - 1500 psi (3,5 - 105 bar), 200 psi (14 bar) Standard Setting | V | Viton |
| | | D | 25 - 800 psi (1,7 - 55 bar), 200 psi (14 bar) Standard Setting | | |
| | | N | 60 - 800 psi (4 - 55 bar), 200 psi (14 bar) Standard Setting | | |
| | | W | 150 - 4500 psi (10,5 - 315 bar), 200 psi (14 bar) Standard Setting | | |

INCLUDED COMPONENTS

| Part | Description | Quantity |
|--------------|---------------------|----------|
| 500-001-012* | O-Ring | 4 |
| 811-001-006* | Pin | 1 |
| 850-004-218* | Plug | 1 |
| DTAFMHN912 | Cartridge | 1 |
| PVDALAN | Cartridge - Primary | 1 |