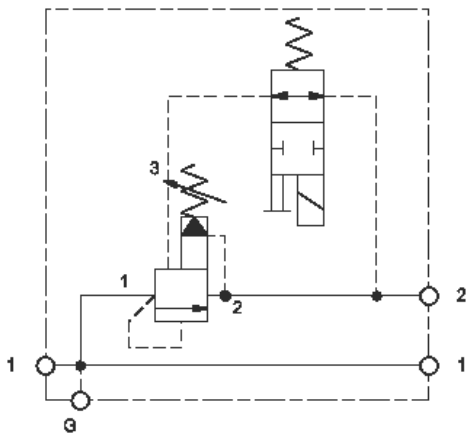
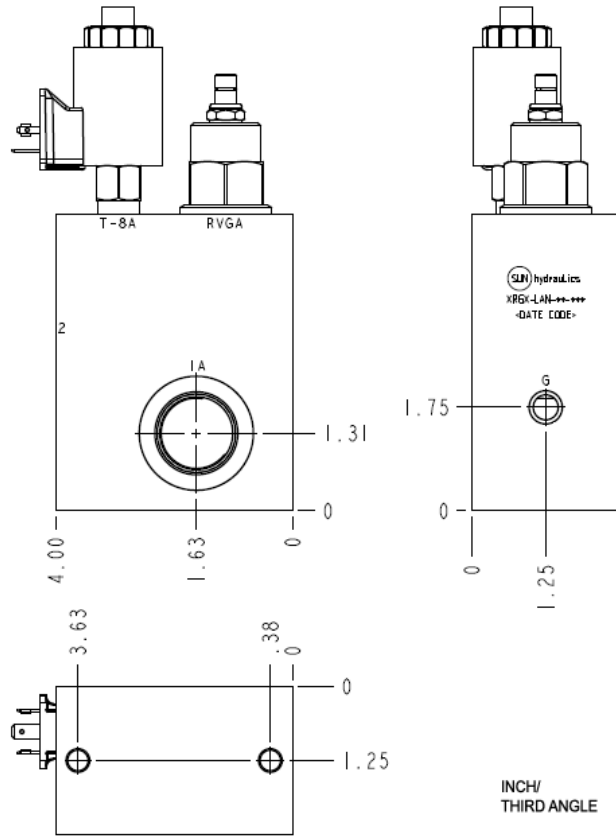


Normally Closed



Normally Open



**CONFIGURATION**

<b>L</b>	
<b>A</b>	100 - 3000 psi (7 - 210 bar), 1000 psi (70 bar)
<b>N</b>	
<b>F</b>	Solenoid Designation 740 Coil-Normally Open (with RVGA primary cartridge,
<b>L</b>	Port and Material .375 - 16UNC x .62 DP; Aluminum
<b>Coil</b>	

**TECHNICAL DATA**

		NOTE:
		DATA
		MAY
	240 L/min.	VARY
	2	BY

**OPTION SELECTION EXAMPLE: XRGXLANFL**

(L)

(A)

(N)

<b>L</b>	<b>A</b> 100 - 3000 psi (7 - 210 bar), 1000 psi (70 bar)	<b>N</b> V
----------	--	---------------

**INCLUDED COMPONENTS**

Part	Description	Quantity
DTAFMHN	Cartridge	1
RVGALAN	Cartridge - Primary	1

**TECHNICAL FEATURES**

- FLeX