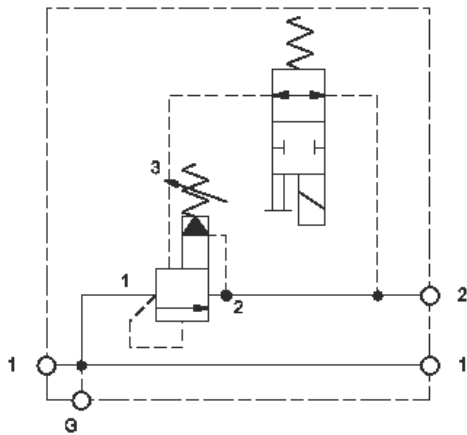


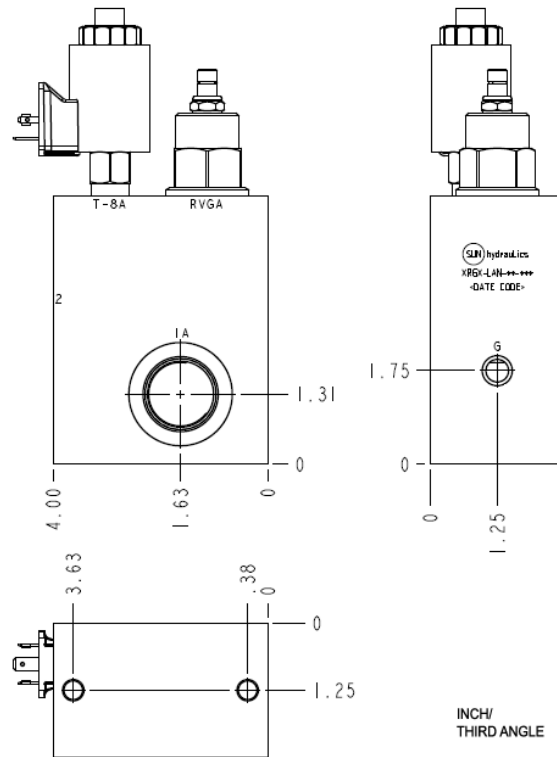
Normally Closed



Normally Open

CONFIGURATION

L	Control	Standard Screw Adjustment
A	Adjustment Range	100 - 3000 psi (7 - 210 bar), 1000 psi (70 bar) Standard Setting
N	Seal Material	Buna-N
F	Solenoid Designation	740 Coil-Normally Open (with RVGA primary cartridge, Ventable, pilot-operated, balanced piston relief valve)
NOTES:		
L	Port and Material Designation	Ports 1 & 2 — SAE 12; Gage Port — 1/4" NPTF; Mtg Holes — .375 - 16UNC x .62 DP; Aluminum
224	Coil	DIN 43650 3 pin (Hirschman) 24 VDC



This valve assembly provides 2 functions. It relieves from pressure (port 1) to tank (port 2) when pressure at port 1 exceeds the setting of the valve. The solenoid control allows the valve to be vented, dropping the pressure to a minimal level. This assembly is available in both normally open option and normally closed option. The normally open option means the pressure is at a low level until the solenoid is energized. The normally closed option means the pressure is at a high level until the solenoid is energized.

TECHNICAL DATA

Body Type	Line mount
Mounting Hole Quantity	2

- **Important:** Carefully consider the maximum system pressure. The pressure rating of the manifold is dependent on the manifold material, with the port type/size a secondary consideration. Manifolds constructed of aluminum are not rated for pressures higher than 3000 psi (210 bar), regardless of the port type/size specified.
- For detailed information regarding the cartridges contained in this assembly, click on the models codes shown in the Included Components tab.

CONFIGURATION OPTIONS

Model Code Example: XRGXLANFL224

CONTROL	(L)	ADJUSTMENT RANGE	(A)	SEAL MATERIAL	(N)
L	Standard Screw Adjustment	A	100 - 3000 psi (7 - 210 bar), 1000 psi (70 bar) Standard Setting	N	Buna-N
C	Tamper Resistant - Factory Set	B	50 - 1500 psi (3,5 - 105 bar), 1000 psi (70 bar) Standard Setting	V	Viton
K	Handknob	C	150 - 6000 psi (10,5 - 420 bar), 1000 psi (70 bar) Standard Setting		
		D	25 - 800 psi (1,7 - 55 bar), 400 psi (28 bar) Standard Setting		
		E	25 - 400 psi (1,7 - 28 bar), 200 psi (14 bar) Standard Setting		
		W	150 - 4500 psi (10,5 - 315 bar), 1000 psi (70 bar) Standard Setting		

INCLUDED COMPONENTS

Part	Description	Quantity
DTAFMHN224	Cartridge	1
RVGALAN	Cartridge - Primary	1