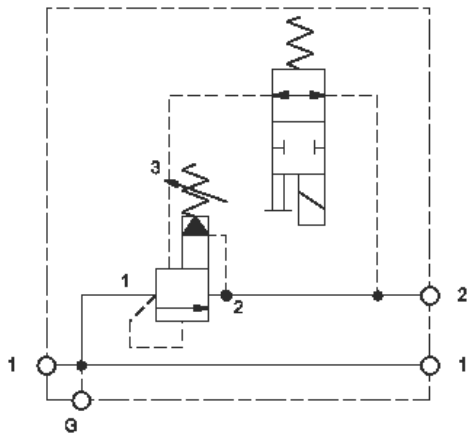
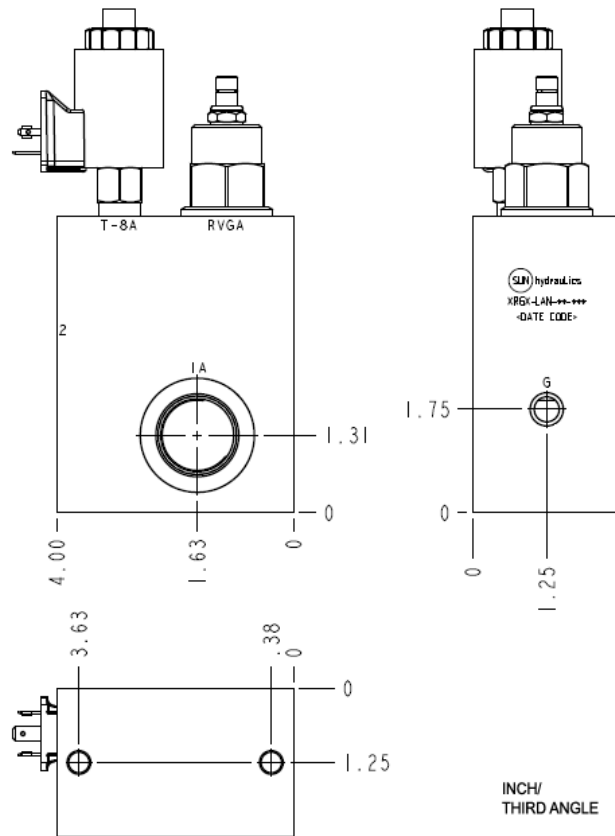


Normally Closed



Normally Open



CONFIGURATION

L	Control	Standard Screw Adjustment
A	Adjustment Range	100 - 3000 psi (7 - 210 bar), 1000 psi (70 bar) Standard Setting
N	Seal Material	Buna-N
F	Solenoid Designation	740 Coil-Normally Open (with RVGA primary cartridge, Ventable, pilot-operated, balanced piston relief valve)
L	Port and Material Designation	Ports 1 & 2 — SAE 12; Gage Port — 1/4" NPTF; Mtg Holes — .375 - 16UNC x .62 DP; Aluminum
224	Coil	DIN 43650 3 pin (Hirschman) 24 VDC

This valve assembly provides 2 functions. It relieves from pressure (port 1) to tank (port 2) when pressure at port 1 exceeds the setting of the valve. The solenoid control allows the valve to be vented, dropping the pressure to a minimal level. This assembly is available in both normally open option and normally closed option. The normally open option means the pressure is at a low level until the solenoid is energized. The normally closed option means the pressure is at a high level until the solenoid is energized.

TECHNICAL DATA

NOTE:

Body Type	Line mount	DATA MAY VARY BY
Series		
Capacity	60 gpm	
Mounting Hole Quantity	2	

- NOTES:**
- **Important:** Carefully consider the maximum system pressure. The pressure rating of the manifold is dependent on the manifold material, with the port type/size a secondary consideration. Manifolds constructed of aluminum are not rated for pressures higher than 3000 psi (210 bar), regardless of the port type/size specified.
 - For detailed information regarding the cartridges contained in this assembly, click on the models codes shown in the Included Components tab.

OPTION SELECTION EXAMPLE: XRGXLANFL224

CONTROL	(L) ADJUSTMENT RANGE	(A) SEAL MATERIAL	(N)
L Standard Screw Adjustment	A 100 - 3000 psi (7 - 210 bar), 1000 psi (70 bar) Standard Setting	N Buna-N	
C Tamper Resistant - Factory Set	B 50 - 1500 psi (3,5 - 105 bar), 1000 psi (70 bar) Standard Setting	V Viton	
K Handknob	C 150 - 6000 psi (10,5 - 420 bar), 1000 psi (70 bar) Standard Setting		
	D 25 - 800 psi (1,7 - 55 bar), 400 psi (28 bar) Standard Setting		
	E 25 - 400 psi (1,7 - 28 bar), 200 psi (14 bar) Standard Setting		
	W 150 - 4500 psi (10,5 - 315 bar), 1000 psi (70 bar) Standard Setting		

INCLUDED COMPONENTS

Part	Description	Quantity
DTAFMHN224	Cartridge	1
RVGALAN	Cartridge - Primary	1

TECHNICAL FEATURES

- This assembly is well suited to loading and unloading a pump.
- The nature of a vented relief is that it brings the pressure up in a smooth manner. Unloading is abrupt.
- Now available with FLeX Series solenoid valves. See CONFIGURATION section, SOLENOID DESIGNATION to specify.