

This assembly provides 2 functions. It relieves pressure from (port 1) to tank (port 2) when pressure at port 1 exceeds the setting of the valve. The solenoid control allows the valve to be vented, dropping the pressure to a minimal level. This assembly is either normally open meaning the pressure is at a low level until the solenoid is energized or normally closed meaning the pressure is at high level until the solenoid is energized.

TECHNICAL DATA NOTE: DATA MAY VARY BY CONFIGURATION. SEE CONFIGURATION SECTION.

| | |
|---------------------------------|----------|
| Body Type | Sandwich |
| Interface | ISO 08 |
| Capacity | 120 gpm |
| Body Features | B to T |
| Seal Plate Included (see notes) | No |
| Stack Height | 3.44 in. |

- NOTES:**
- Coil must be ordered separately. See Accessories: Coils: Part numbers 760-***.
 - For detailed information regarding the cartridges contained in this assembly, click on the models codes shown in the Included Components tab.
 - **Important:** Carefully consider the maximum system pressure. The pressure rating of the manifold is dependent on the manifold material, with the port type/size a secondary consideration. Manifolds constructed of aluminum are not rated for pressures higher than 3000 psi (210 bar), regardless of the port type/size specified.

OPTION SELECTION EXAMPLE: XRIDLANFA224

| CONTROL | (L) ADJUSTMENT RANGE | (A) SEAL MATERIAL | (N) |
|---|--|-------------------|-----|
| L Standard Screw Adjustment | A 100 - 3000 psi (7 - 210 bar), 1000 psi (70 bar) Standard Setting | N Buna-N | |
| C Tamper Resistant - Factory Set | B 50 - 1500 psi (3,5 - 105 bar), 1000 psi (70 bar) Standard Setting | V Viton | |
| | C 150 - 6000 psi (10,5 - 420 bar), 1000 psi (70 bar) Standard Setting | | |
| | D 25 - 800 psi (1,7 - 55 bar), 400 psi (28 bar) Standard Setting | | |
| | E 25 - 400 psi (1,7 - 28 bar), 200 psi (14 bar) Standard Setting | | |
| | N 60 - 800 psi (4 - 55 bar), 400 psi (28 bar) Standard Setting | | |
| | W 150 - 4500 psi (10,5 - 315 bar), 1000 psi (70 bar) Standard Setting | | |

INCLUDED COMPONENTS

| Part | Description | Quantity |
|---------------|---------------------|----------|
| 500-001-114* | O-Ring | 2 |
| 500-001-121* | O-Ring | 4 |
| 811-001-002* | Locating Pin | 1 |
| A330-006-004* | SAE Plug | 1 |
| DTAFMHN224 | Cartridge | 1 |
| RVIALAN | Cartridge - Primary | 1 |

TECHNICAL FEATURES

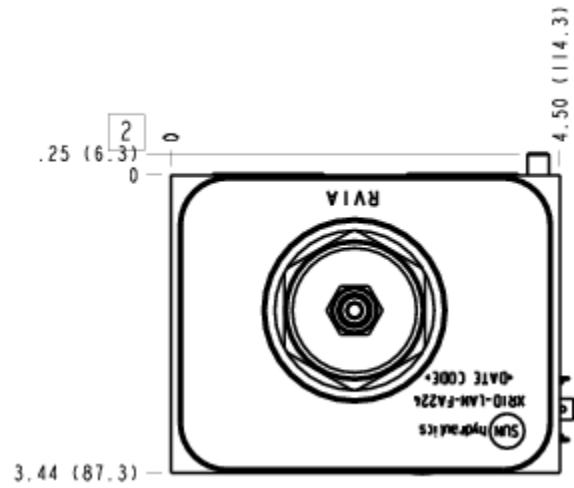
- Now available with FLeX Series solenoid valves. See CONFIGURATION section, SOLENOID DESIGNATION to specify.
- Not suitable for use in load holding applications due to spool leakage.
- Back pressure on the tank port (port 2) is directly additive to the valve setting at a 1:1 ratio.

MANIFOLD FACES

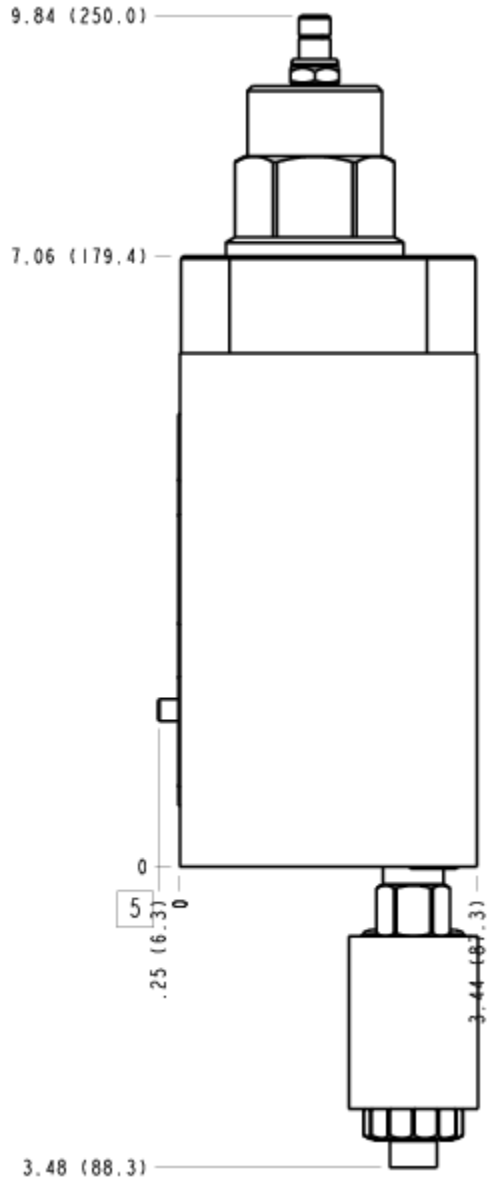
FACE GRID

| | | | |
|---|----|----|----|
| 1 | 2 | 3 | 4 |
| 5 | 6 | 7 | 8 |
| 9 | 10 | 11 | 12 |

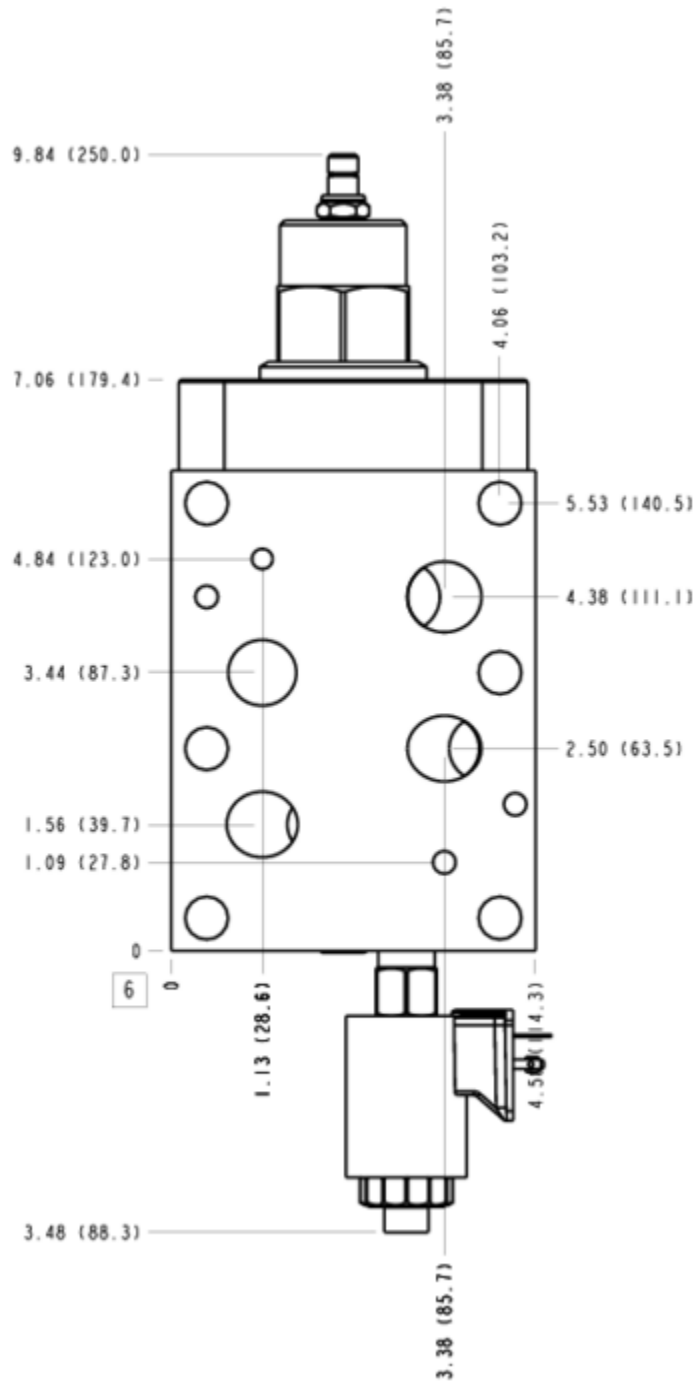
FACE 2



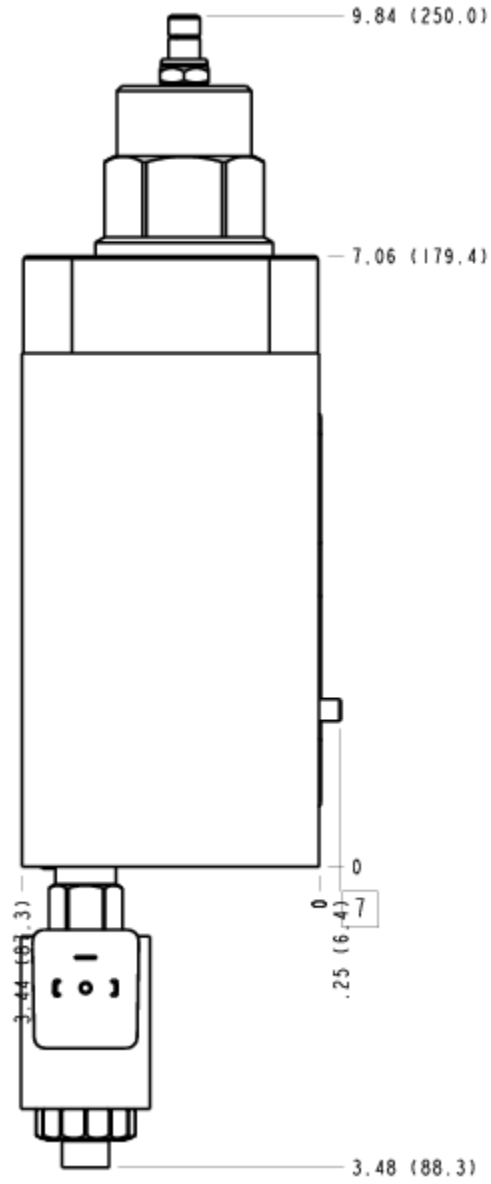
FACE 5



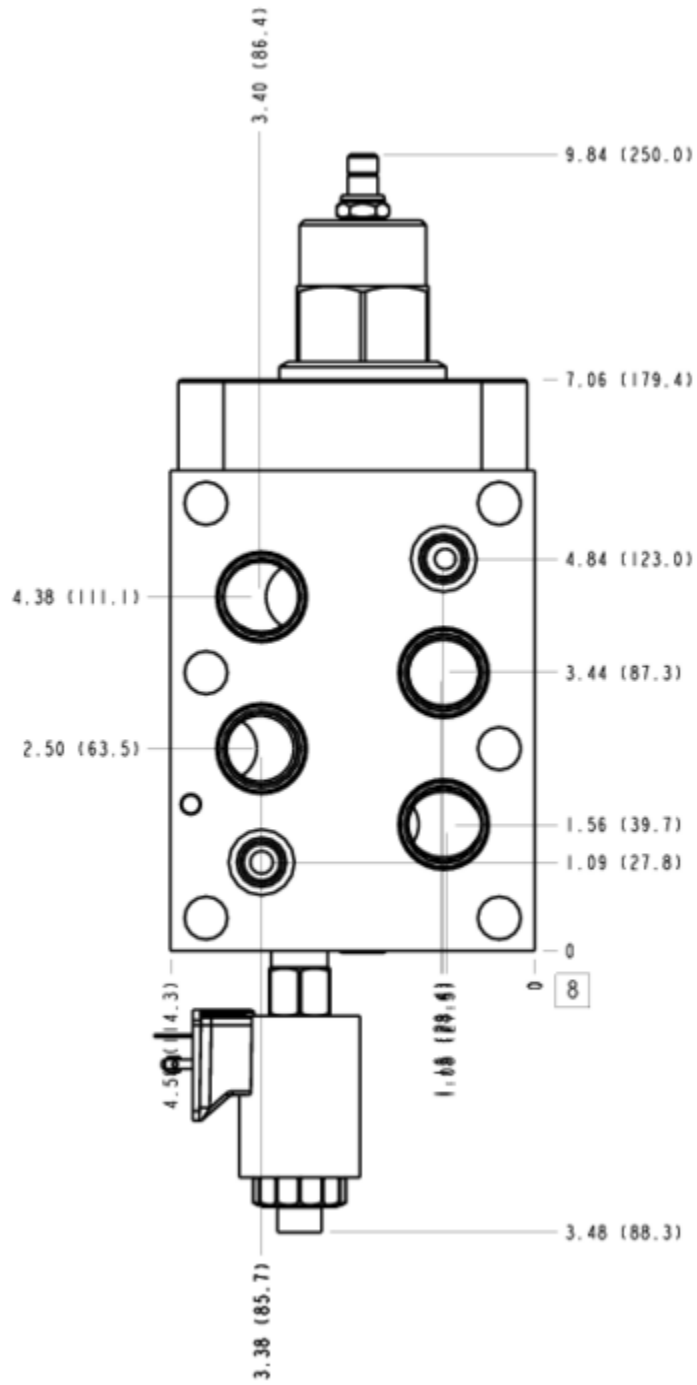
FACE 6



FACE 7



FACE 8



FACE 10

