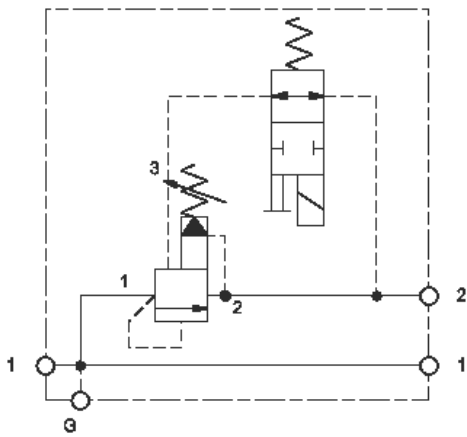
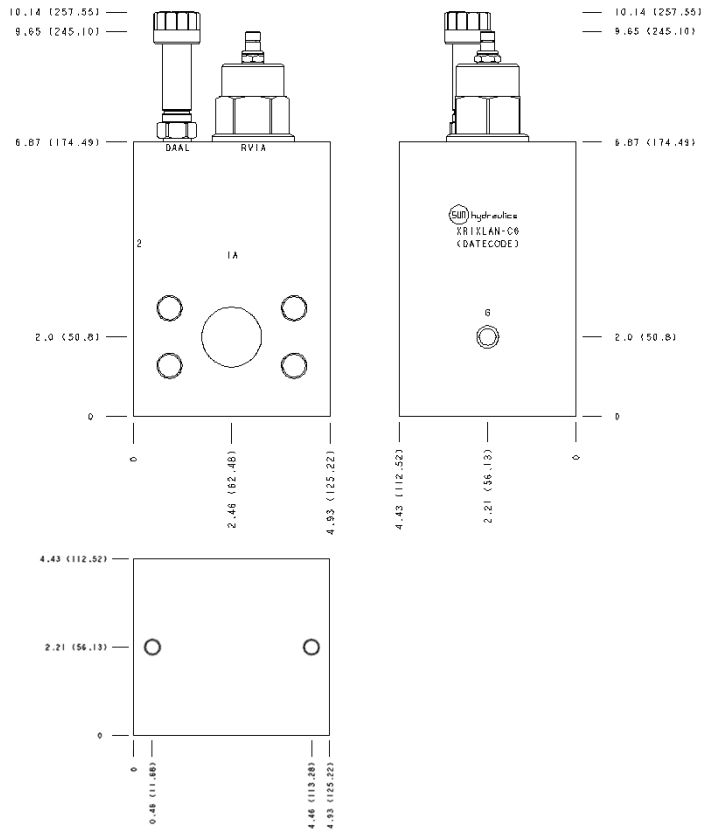


Normally Closed



Normally Open



TECHNICAL DATA NOTE: DATA MAY VARY BY CONFIGURATION. SEE CONFIGURATION SECTION.

	480 L/min.
	2

OPTION SELECTION EXAMPLE: XRIXLANF6

(L)

(A)

(N)

L	A 100 - 3000 psi (7 - 210 bar), 1000 psi (70 bar)	N V
----------	--	---------------

INCLUDED COMPONENTS

Part	Description	Quantity
DTAFMHN	Cartridge	1
RVIALAN	Cartridge - Primary	1