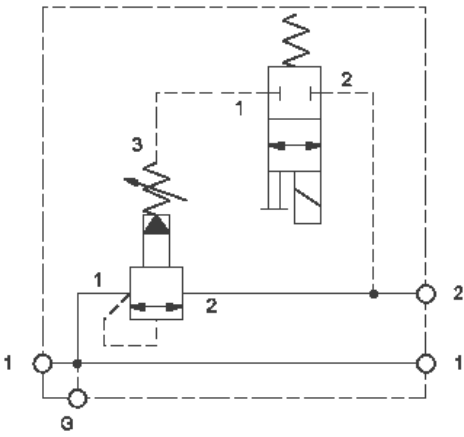


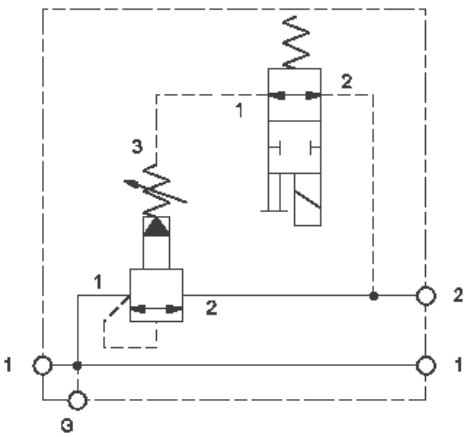


TECHNICAL DATA NOTE: DATA MAY VARY BY CONFIGURATION. SEE CONFIGURATION SECTION.

Body Type	montaje en línea
Body Features	Through port 1 with gauge port
Mounting Hole Thread	.375-16 UNC - 2B in.
Mounting Hole Depth	15,7 mm
Mounting Hole Quantity	1



Normally Closed



Normally Open

CONFIGURATION OPTIONS

Model Code Example: XRJKLANFL912

CONTROL	(L) ADJUSTMENT RANGE	(A) SEAL MATERIAL	(N)
L Standard Screw Adjustment	A 100 - 3000 psi (7 - 210 bar), 1000 psi (70 bar) Standard Setting	N Buna-N	V Viton

INCLUDED COMPONENTS

Part	Description	Quantity
DTAFMHN912	Cartridge	1
RSFCLAN	Cartridge - Primary	1