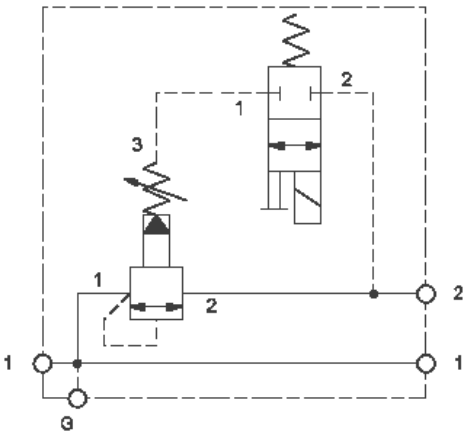


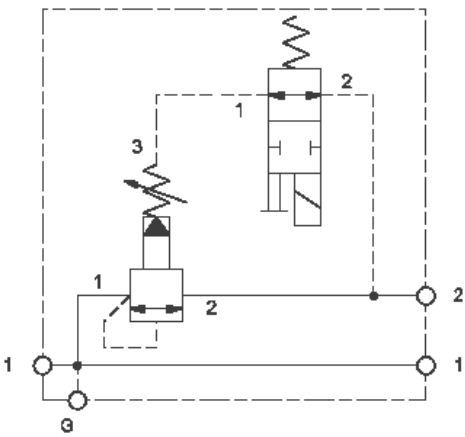


**TECHNICAL DATA** NOTE: DATA MAY VARY BY CONFIGURATION. SEE CONFIGURATION SECTION.

	Through port 1 with gauge port
	.375-16 UNC - 2B in.
	15,7 mm
	1



Normally Closed



Normally Open

**CONFIGURATION OPTIONS**

**Model Code Example: XRJKLANFL912**

(L)

(A)

(N)

<b>L</b>	<b>A</b> 100 - 3000 psi (7 - 210 bar), 1000 psi (70 bar)	<b>N</b> <b>V</b>
----------	--	----------------------

**INCLUDED COMPONENTS**

Part	Description	Quantity
DTAFMHN912	Cartridge	1
RSFCLAN	Cartridge - Primary	1