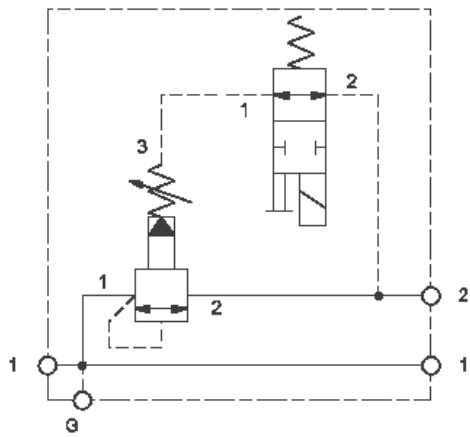


Normally Closed



Normally Open

TECHNICAL DATA NOTE: DATA MAY VARY BY CONFIGURATION. SEE CONFIGURATION SECTION.

	120 L/min.
	Through port 1 with gauge port
	.375-16 UNC - 2B in.
	15,7 mm
	1

OPTION SELECTION EXAMPLE: XRJKLANFL912

(L)

(A)

(N)

L	A 100 - 3000 psi (7 - 210 bar), 1000 psi (70 bar)	N V
----------	--	---------------

INCLUDED COMPONENTS

Part	Description	Quantity
DTAFMHN912	Cartridge	1
RSFCLAN	Cartridge - Primary	1