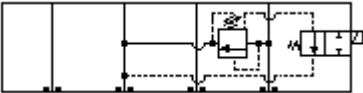
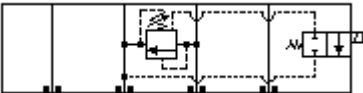


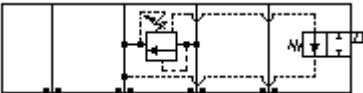
Relief A to T



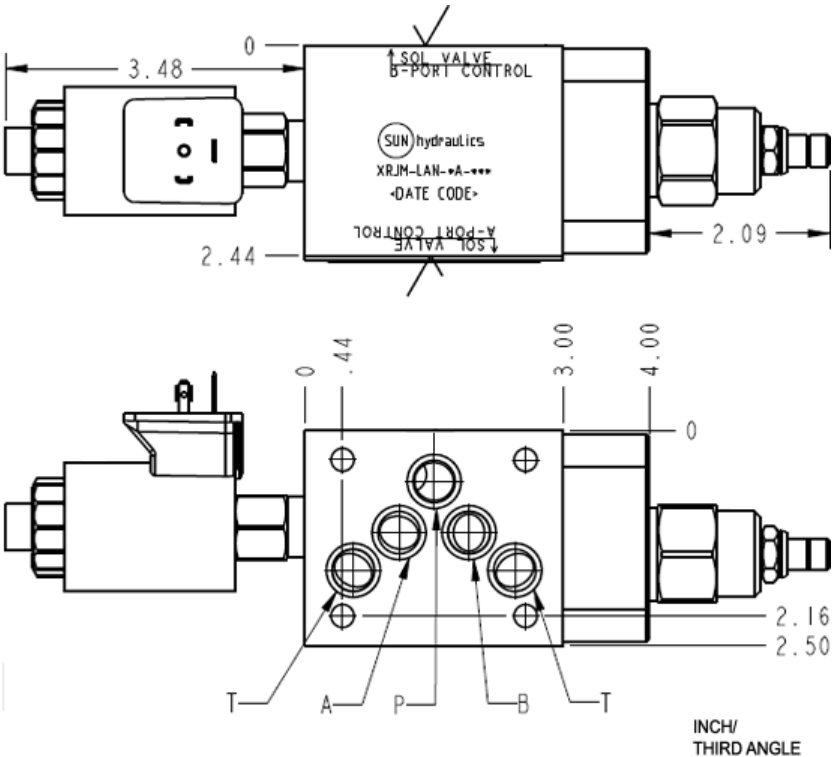
Relief A to T



Relief B to T



Relief B to T



This sandwich valve assembly provides 2 functions. It relieves from the a port to tank (t) when pressure at port a exceeds the setting of the valve. The solenoid control allows the valve to be vented, dropping the pressure to a minimal level. This assembly is available in both normally open option and normally closed option. The normally open option means the pressure is at a low level until the solenoid is energized. The normally closed option means the pressure is at a high level until the solenoid is energized.

TECHNICAL DATA NOTE: DATA MAY VARY BY CONFIGURATION. SEE CONFIGURATION SECTION.

Body Type	Sandwich
Interface	ISO 05
Body Features	A or B to T

- NOTES:**
- **Important:** Carefully consider the maximum system pressure. The pressure rating of the manifold is dependent on the manifold material, with the port type/size a secondary consideration. Manifolds constructed of aluminum are not rated for pressures higher than 3000 psi (210 bar), regardless of the port type/size specified.
 - For detailed information regarding the cartridges contained in this assembly, click on the models codes shown in the Included Components tab.

CONFIGURATION OPTIONS **Model Code Example: XRJMLANFA224**

CONTROL		(L)	ADJUSTMENT RANGE	(A)	SEAL MATERIAL	(N)
L	Standard Screw Adjustment	A	100 - 3000 psi (7 - 210 bar), 1000 psi (70 bar) Standard Setting	N	Buna-N	
C	Tamper Resistant - Factory Set	B	50 - 1500 psi (3,5 - 105 bar), 1000 psi (70 bar) Standard Setting	V	Viton	
K	Handknob	C	150 - 6000 psi (10,5 - 420 bar), 1000 psi (70 bar) Standard Setting			
W	Hex Wrench Adjustment	D	25 - 800 psi (1,7 - 55 bar), 400 psi (28 bar) Standard Setting			
Y	Tri-Grip Handknob	E	25 - 400 psi (1,7 - 28 bar), 200 psi (14 bar) Standard Setting			
		N	60 - 800 psi (4 - 55 bar), 400 psi (28 bar) Standard Setting			
		Q	60 - 400 psi (4 - 28 bar), 200 psi (14 bar) Standard Setting			
		W	150 - 4500 psi (10,5 - 315 bar), 1000 psi (70 bar) Standard Setting			

INCLUDED COMPONENTS

Part	Description	Quantity
500-001-014*	O-Ring	5
700-001*	Seal Plate	1
DTAFMHN224	Cartridge	1
RVEALAN	Cartridge - Primary	1