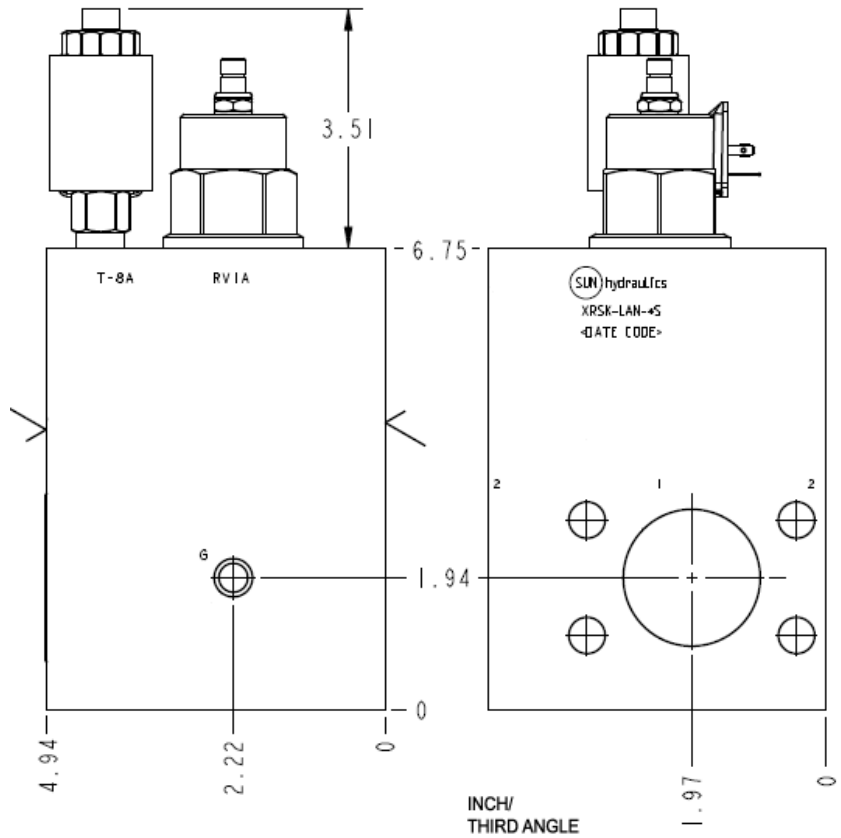


**CONFIGURATION**

L	Control	Standard Screw Adjustment
A	Adjustment Range	100 - 3000 psi (7 - 210 bar), 1000 psi (70 bar) Standard Setting
N	Seal Material	Buna-N
F	Solenoid Designation	740 Coil-Normally Open (with RVIA primary cartridge, Ventable, pilot-operated, balanced piston relief valve)
S	Port and Material Designation	Port G — 1/4" NPTF; Ports 1 & 2 — 2" Code 61; Aluminum
912	Coil	Deutsch DT04-2P 12 VDC



This assembly provides 2 functions. It relieves pressure from (port 1) to tank (port 2) when pressure at port 1 exceeds the setting of the valve. The solenoid control allows the valve to be vented, dropping the pressure to a minimal level. This assembly is either normally open meaning the pressure is at a low level until the solenoid is energized or normally closed meaning the pressure is at high level until the solenoid is energized.

**TECHNICAL DATA** NOTE: DATA MAY VARY BY CONFIGURATION. SEE CONFIGURATION SECTION.

Body Type	Gasket mount
Interface	2.00 SAE C61
Capacity	120 gpm
Body Features	Through port 1 with gauge port

- NOTES:**
- **Important:** Carefully consider the maximum system pressure. The pressure rating of the manifold is dependent on the manifold material, with the port type/size a secondary consideration. Manifolds constructed of aluminum are not rated for pressures higher than 3000 psi (210 bar), regardless of the port type/size specified.
  - For detailed information regarding the cartridges contained in this assembly, click on the models codes shown in the Included Components tab.

**OPTION SELECTION EXAMPLE: XRSKLANFS912**

CONTROL	(L) ADJUSTMENT RANGE	(A) SEAL MATERIAL	(N)
L Standard Screw Adjustment	A 100 - 3000 psi (7 - 210 bar), 1000 psi (70 bar) Standard Setting	N Buna-N V Viton	

**INCLUDED COMPONENTS**

Part	Description	Quantity
500-001-228*	O-Ring	1
DTAFMHN912	Cartridge	1
RVIALAN	Cartridge - Primary	1

**TECHNICAL FEATURES**

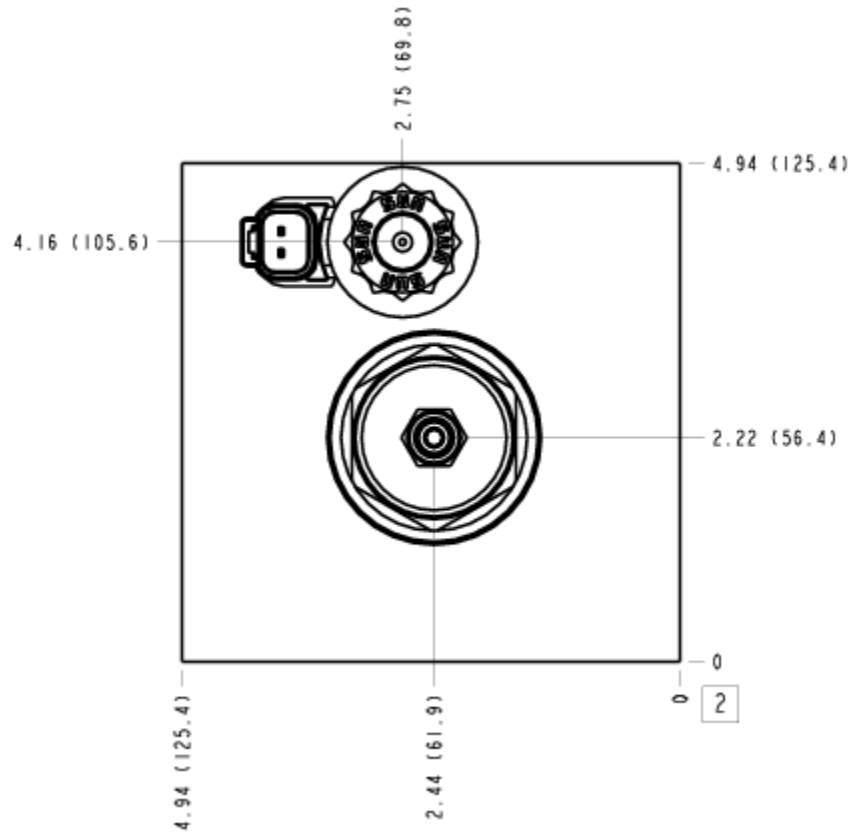
- Not suitable for use in load holding applications due to spool leakage.
- Back pressure on the tank port (port 2) is directly additive to the valve setting at a 1:1 ratio.
- Now available with FLEx Series solenoid valves. See CONFIGURATION section, SOLENOID DESIGNATION to specify.

**MANIFOLD FACES**

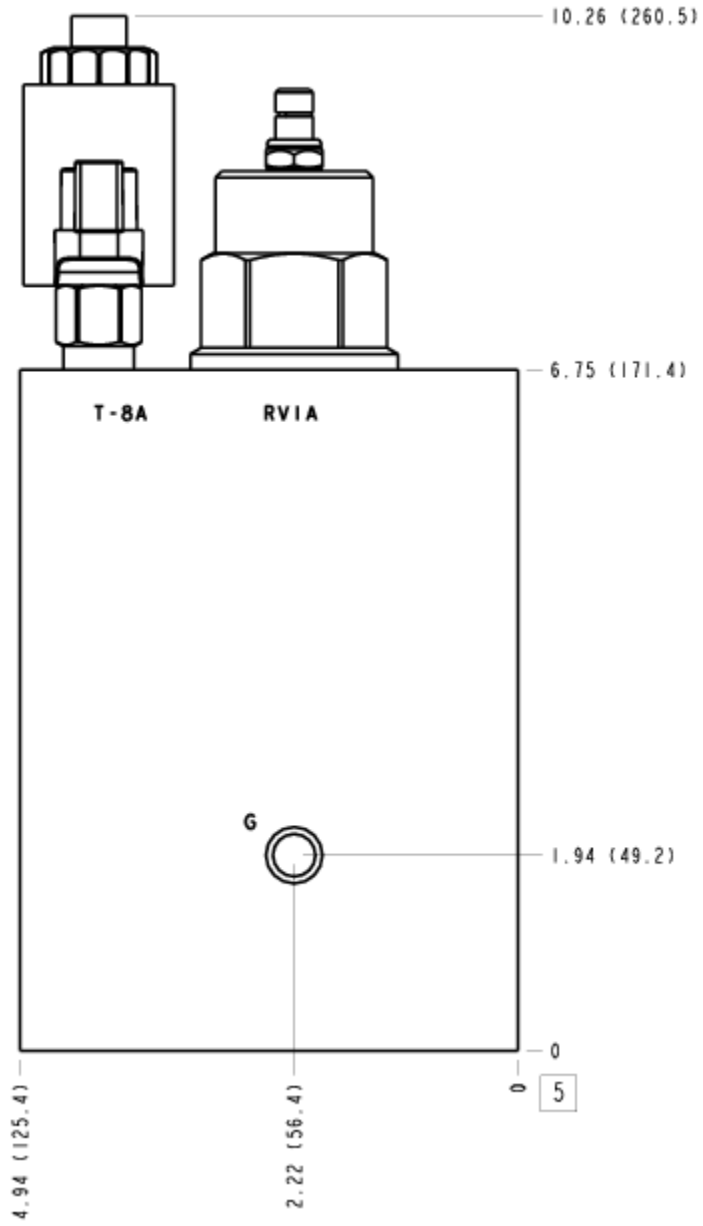
**FACE GRID**

1	2	3	4
5	6	7	8
9	10	11	12

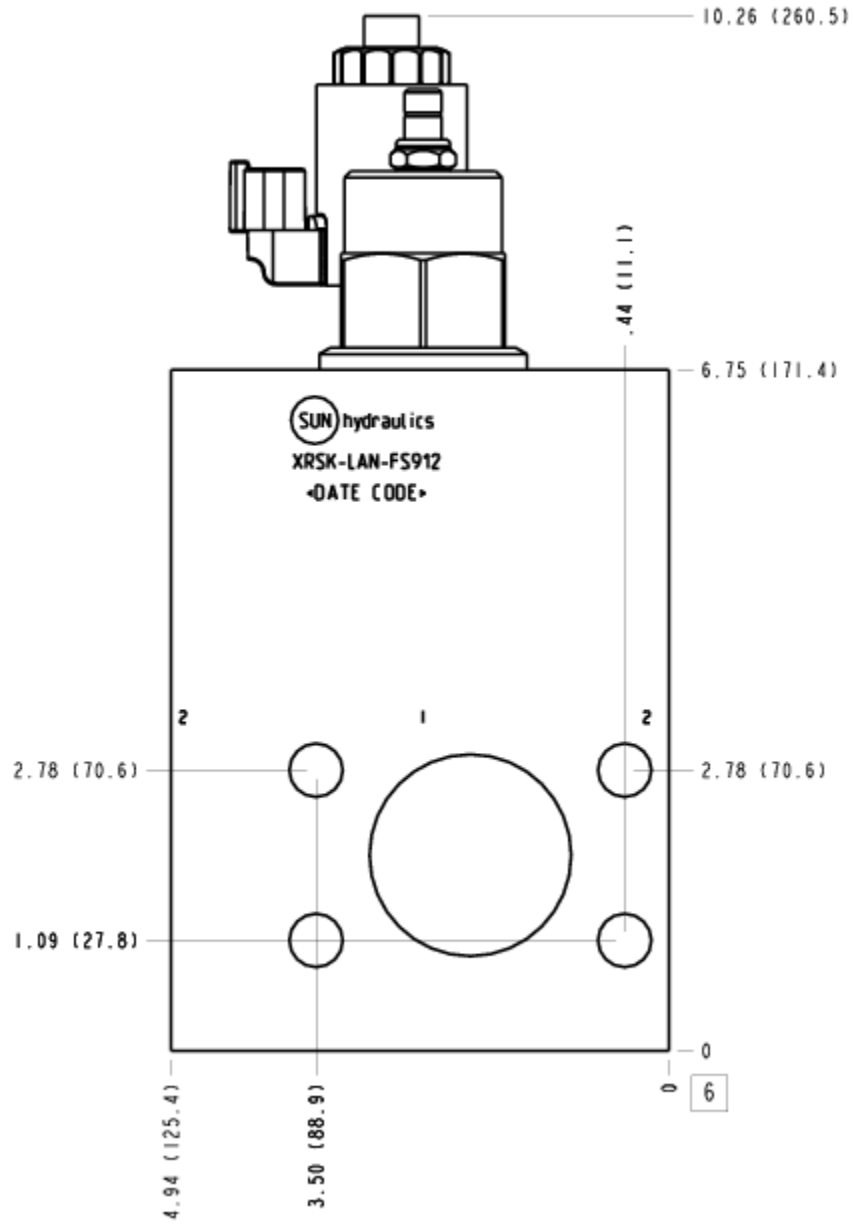
# FACE 2



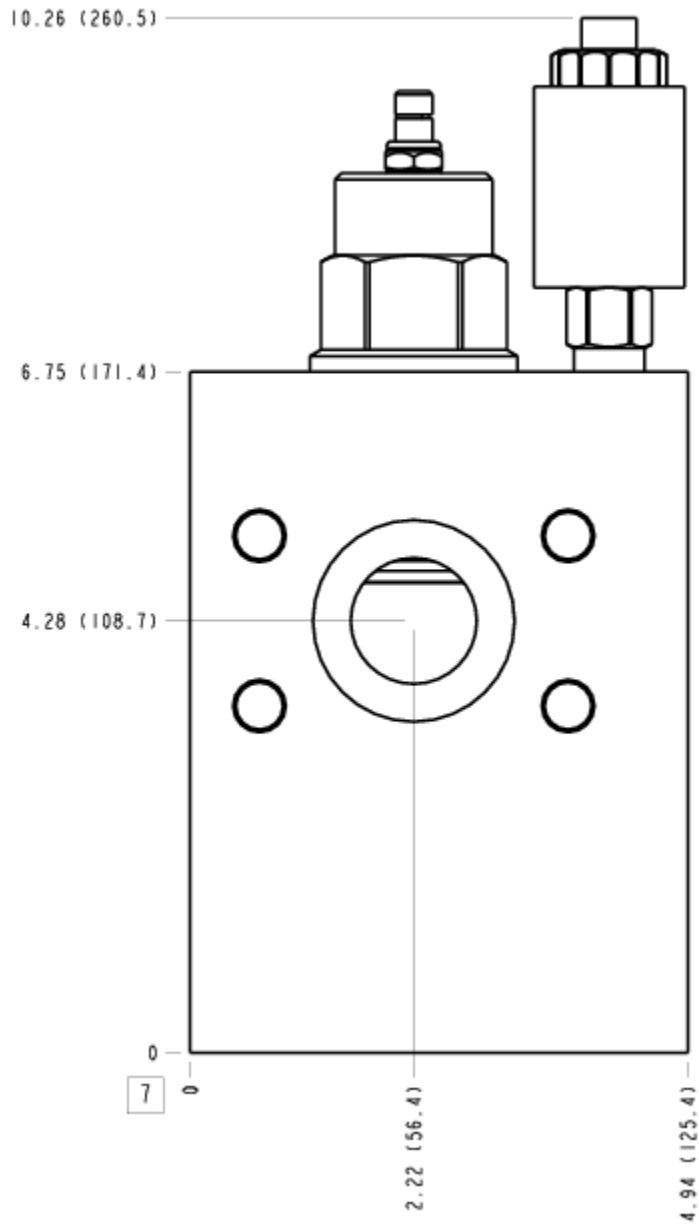
FACE 5



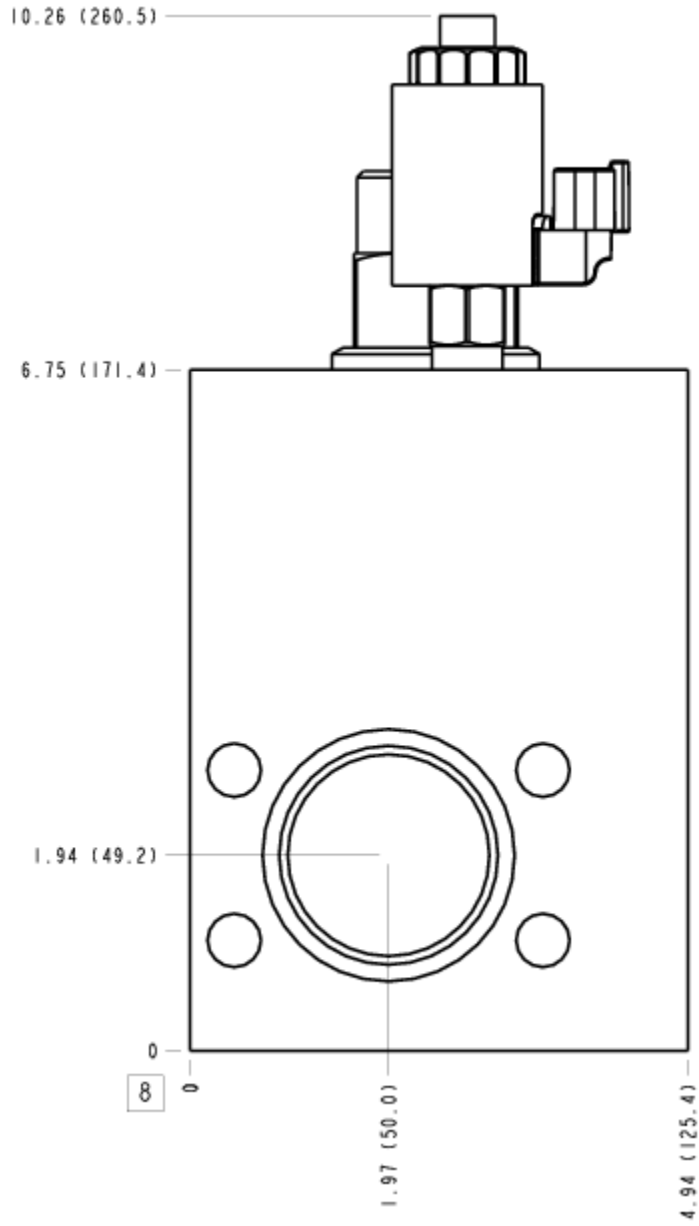
FACE 6



FACE 7



FACE 8



FACE 10

