

TECHNICAL DATA NOTE: DATA MAY VARY BY CONFIGURATION. SEE CONFIGURATION SECTION.

Body Type	Line mount
Capacity	.6 - 3 gpm
Mounting Hole Diameter	.28 in.
Mounting Hole Depth	Through
Mounting Hole Quantity	2

- NOTES:**
- **Important:** Carefully consider the maximum system pressure. The pressure rating of the manifold is dependent on the manifold material, with the port type/size a secondary consideration. Manifolds constructed of aluminum are not rated for pressures higher than 3000 psi (210 bar), regardless of the port type/size specified.
 - For detailed information regarding the cartridges contained in this assembly, click on the models codes shown in the Included Components tab.

OPTION SELECTION EXAMPLE: YCCAXCNAJ

CONTROL	(X) CRACKING PRESSURE	(C) SEAL MATERIAL	(N)
X Standard Pilot	C 30 psi (2 bar)	N Buna-N	
	D 50 psi (3,5 bar)	V Viton	
	E 75 psi (5 bar)		
	F 100 psi (7 bar)		

PRIMARY CARTRIDGE (A)

A	A (with CKCB primary cartridge, Pilot-to-open check valve with standard pilot)
A	A (with CKCBV primary cartridge, Vented pilot-to-open check valve with 1/4 NPTF external pilot port and standard pilot)
A	A (with KCBSC primary cartridge, Vented pilot-to-open check valve with SAE-4 external pilot port and standard pilot)

INCLUDED COMPONENTS

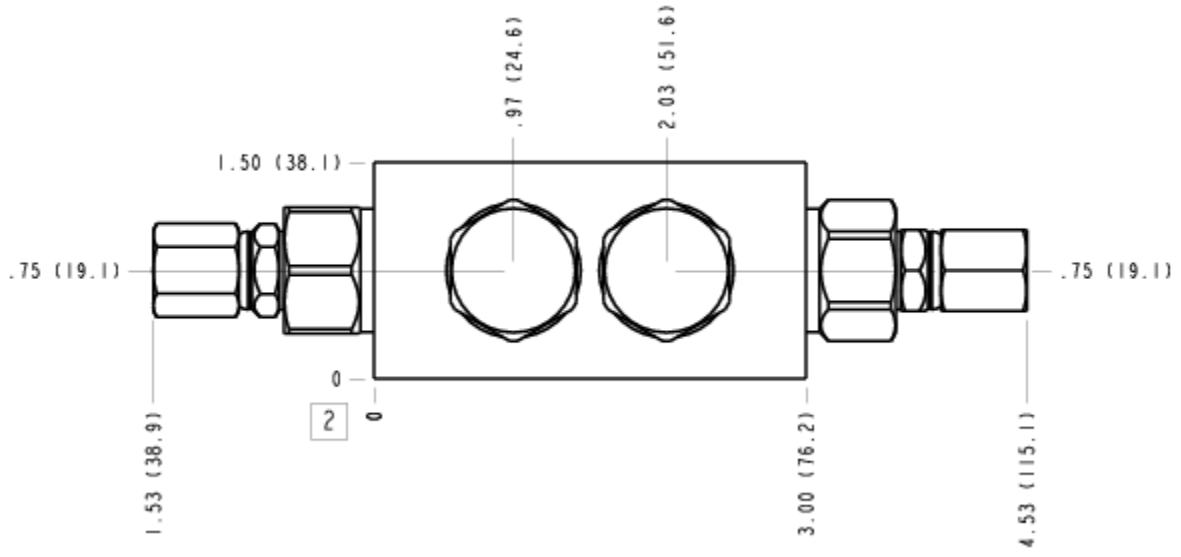
Part	Description	Quantity
CKCBXCN	Cartridge - Primary	2
RPECJAN	Cartridge	2

MANIFOLD FACES

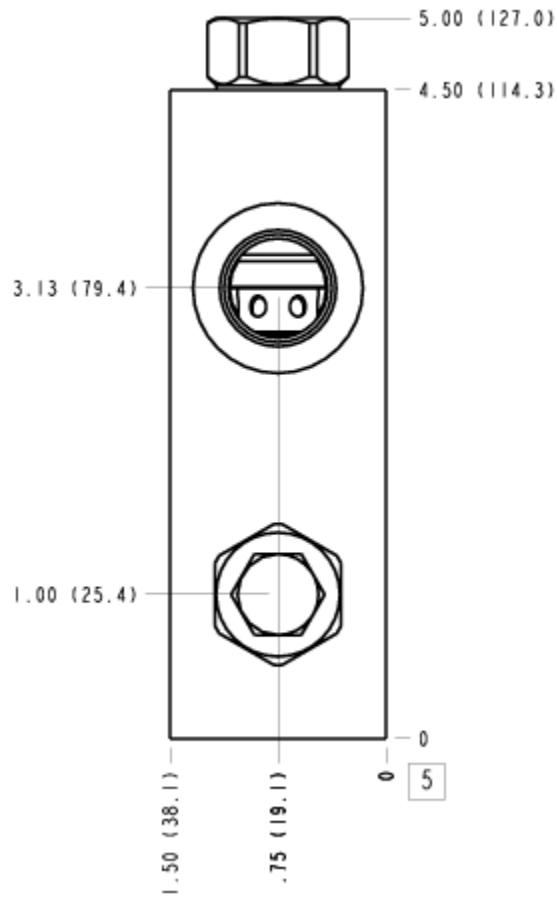
FACE GRID

1	2	3	4
5	6	7	8
9	10	11	12

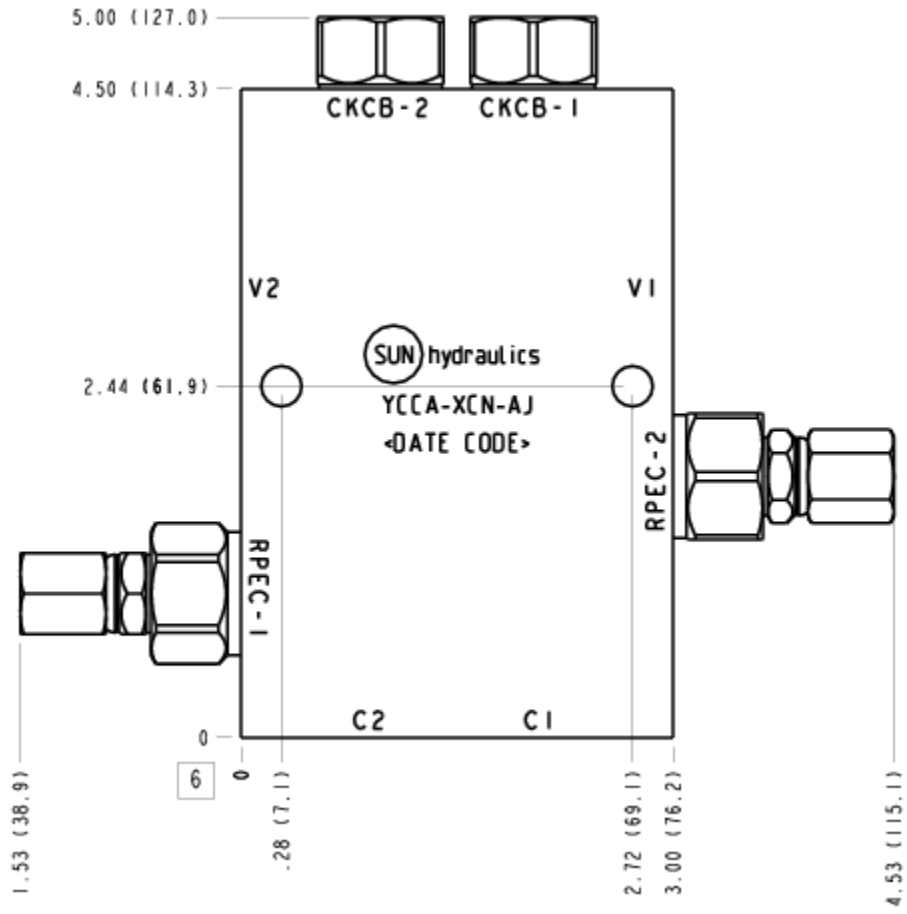
FACE 2



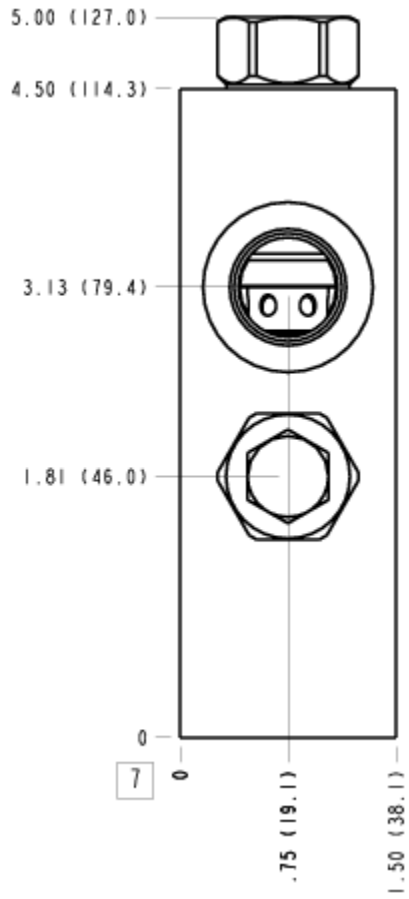
FACE 5



FACE 6



FACE 7



FACE 10

