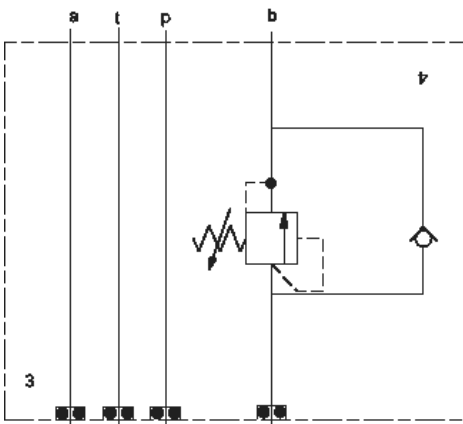


On A



On B

**CONFIGURATION OPTIONS**

**Model Code Example: YCDFLANAA**

CONTROL	(L)	ADJUSTMENT RANGE	(A)	SEAL MATERIAL	(N)
<b>L</b>	Standard Screw Adjustment	<b>A</b>	500 - 3000 psi (35 - 210 bar), 1000 psi (70 bar) Standard Setting	<b>N</b>	Buna-N
<b>C</b>	Tamper Resistant - Factory Set	<b>W</b>	800 - 4500 psi (55 - 315 bar), 1000 psi (70 bar) Standard Setting	<b>V</b>	Viton
<b>F</b>	Hex Head Screw with Locknut				
<b>W</b>	Hex Wrench Adjustment				
<b>Y</b>	manilla de tres agarres				

**PRIMARY CARTRIDGE**

(A)

<b>A</b>	A (with RDDA primary cartridge, Acción-directa alivio válvula )
<b>A</b>	A (with RDDA3 primary cartridge, No-ajustable acción-directa alivio válvula )

**INCLUDED COMPONENTS**

Part	Description	Quantity
500-001-012*	O-Ring	4
700-002*	Seal Plate	1
811-001-006*	Pin	1
CXCDXCN	Cartridge	1
RDDALAN	Cartridge - Primary	1