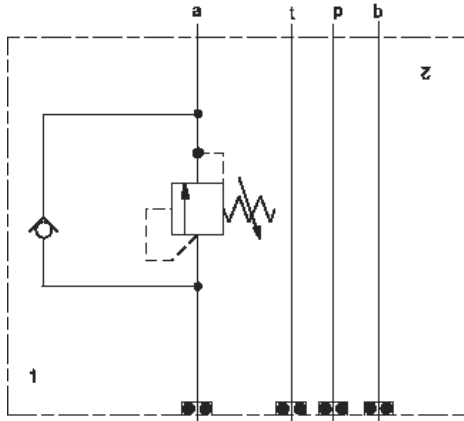


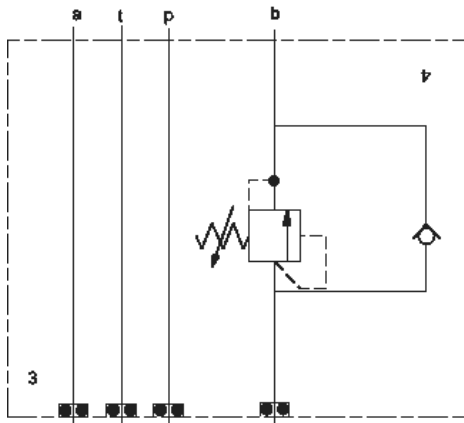


sunhydraulics.com/model/YCDF

This assembly consists of direct-acting relief cartridge which is normally closed, pressure-limiting valve and also includes a check valve that allows reverse free flow.



On A



On B

TECHNICAL DATA

NOTE:
DATA MAY VARY BY

Body Type	Sandwich
Interface	ISO 03
Capacity	15 gpm
Body Features	On A or B
Seal Plate Included (see notes)	Yes
Stack Height	1.75 in.

CONFIGURATION

NOTES: • Customer to install locating pin (included) for functional orientation desired.

L Control • For detailed information regarding the cartridges contained in this assembly, click on the models codes shown in the Included Components tab.

• **Important:** Carefully consider the maximum system pressure. The pressure rating of the manifold is dependent on the manifold material, with the port type/size a secondary consideration. Manifolds constructed of aluminum are not rated for pressures higher than 3000 psi (210 bar), regardless of the port type/size specified.

N Seal Material	Buna-N
A Primary Cartridge	A (with RDDA primary cartridge, Direct-acting relief valve)
A Port and Material Designation	A Aluminum

OPTION SELECTION EXAMPLE: YCDFLANAA

CONTROL		(L) ADJUSTMENT RANGE	(A) SEAL MATERIAL	(N)	
L	Standard Screw Adjustment	A	500 - 3000 psi (35 - 210 bar), 1000 psi (70 bar) Standard Setting	N	Buna-N
C	Tamper Resistant - Factory Set	C	1000 - 6000 psi (70 - 420 bar), 1000 psi (70 bar) Standard Setting	V	Viton
K	Handknob	D	200 - 800 psi (14 - 55 bar), 400 psi (28 bar) Standard Setting		
W	Hex Wrench Adjustment	E	100 - 400 psi (7 - 28 bar), 200 psi (14 bar) Standard Setting		
Y	Tri-Grip Handknob	S	50 - 200 psi (3,5 - 14 bar), 100 psi (7 bar) Standard Setting		
		W	800 - 4500 psi (55 - 315 bar), 1000 psi (70 bar) Standard Setting		

PRIMARY CARTRIDGE (A)

A	A (with RDDA primary cartridge, Direct-acting relief valve)
A	A (with RDDA3 primary cartridge, Non-adjustable direct-acting relief valve)

INCLUDED COMPONENTS

Part	Description	Quantity
500-001-012*	O-Ring	4
700-002*	Seal Plate	1
811-001-006*	Pin	1
CXCDXCN	Cartridge	1
RDDALAN	Cartridge - Primary	1