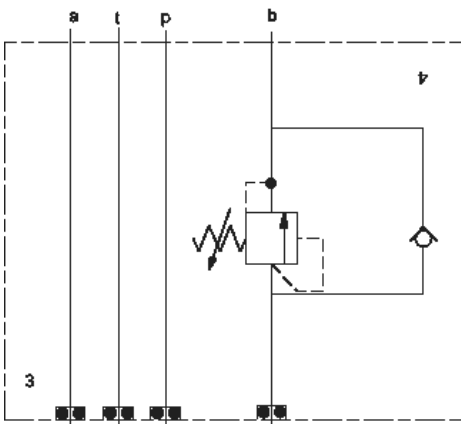


On A

TECHNICAL DATA

Body Type	Sandwich
Interface	ISO 03
Capacity	60 L/min.
Body Features	On A or B
Seal Plate Included (see notes)	Yes
Stack Height	44,5 mm



On B

OPTION SELECTION EXAMPLE: YCDFLANAA

CONTROL		(L) ADJUSTMENT RANGE	(A) SEAL MATERIAL	(N)	
L	Standard Screw Adjustment	A	500 - 3000 psi (35 - 210 bar), 1000 psi (70 bar) Standard Setting	N	Buna-N
C	Tamper Resistant - Factory Set			V	Viton
F	Hex Head Screw with Locknut	W	800 - 4500 psi (55 - 315 bar), 1000 psi (70 bar) Standard Setting		
W	Hex Wrench Adjustment				
Y	manilla de tres agarres				
PRIMARY CARTRIDGE				(A)	
A	A (with RDDA primary cartridge, Acción-directa alivio válvula)				
A	A (with RDDA3 primary cartridge, No-ajustable acción-directa alivio válvula)				

INCLUDED COMPONENTS

Part	Description	Quantity
500-001-012*	O-Ring	4
700-002*	Seal Plate	1
811-001-006*	Pin	1
CXCDXCN	Cartridge	1
RDDALAN	Cartridge - Primary	1