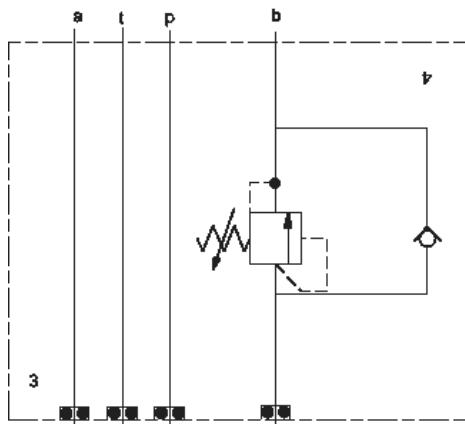


On A



On B

**TECHNICAL DATA** NOTE: DATA MAY VARY BY CONFIGURATION. SEE CONFIGURATION SECTION.

	ISO 03
	60 L/min.
( )	
	On A or B
Stack Height	44,5 mm

**OPTION SELECTION EXAMPLE: YCDFLANAA**

(L) (A) (N)

<b>L</b>	<b>A</b>	500 - 3000 psi (35 - 210 bar), 1000 psi (70 bar)	<b>N</b>
<b>C</b>			<b>V</b>
<b>F</b>	<b>W</b>	800 - 4500 psi (55 - 315 bar), 1000 psi (70 bar)	
<b>W</b>			
<b>Y</b>			

**PRIMARY CARTRIDGE**

(A)

<b>A</b>	A (with RDDA primary cartridge, )
<b>A</b>	A (with RDDA3 primary cartridge, )

**INCLUDED COMPONENTS**

Part	Description	Quantity
500-001-012*	O-Ring	4
700-002*	Seal Plate	1
811-001-006*	Pin	1
CXCDXCN	Cartridge	1
RDDALAN	Cartridge - Primary	1