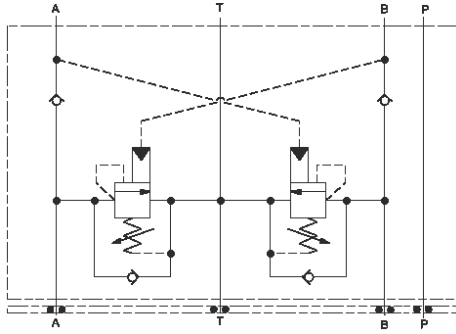




[sunhydraulics.com/model/YCEV](https://sunhydraulics.com/model/YCEV)

This valve assembly provides overrunning load-control, load-port relief protection, supplies make-up oil, and flushes hot dirty oil out of the actuator. All oil coming out of the actuator returns to tank through port T.



## CONFIGURATION

Control	
Functional Setting Range	
Seal Material	
Pilot Ratio (4th Letter) of Primary Cartridge	3:1 (with CBEA primary cartridge, 3:1 pilot ratio, standard capacity counterbalance valve)

**NOTES:** Stack height value in technical data table includes seal retainer plate.

For detailed information regarding the cartridges contained in this assembly, click on the models codes shown in the Included Components tab.

**Important:** Carefully consider the maximum system pressure. The pressure rating of the manifold is dependent on the manifold material, with the port type/size a secondary consideration. Manifolds constructed of aluminum are not rated for pressures higher than 3000 psi (210 bar), regardless of the port type/size specified.

## TECHNICAL DATA

NOTE:  
DATA MAY VARY BY

Body Type	Sandwich
Interface	ISO 05
Capacity	30 gpm
Seal Plate Included (see notes)	Yes
Stack Height	2.99 in.
Mounting Hole Diameter	.28 in.
Mounting Hole Depth	Through
Mounting Hole Quantity	4

CONFIGURATION. SEE CONFIGURATION SECTION.

**OPTION SELECTION EXAMPLE: YCEVHNA**

CONTROL	(L) FUNCTIONAL SETTING RANGE	(I) SEAL MATERIAL	(V)	
<b>L</b> Standard Screw Adjustment	<b>I</b> 400 - 1500 psi w/25 psi Check (28 - 105 bar w/ 1,7 bar Check), 1000 psi (70 bar) Standard Setting	<b>V</b> Viton		
<b>C</b> Tamper Resistant - Factory Set		<b>N</b> Buna-N		
		<b>A</b> 1000 - 4000 psi w/4 psi Check (70 - 280 bar w/ 0,3 bar Check), 3000 psi (210 bar) Standard Setting		
		<b>B</b> 400 - 1500 psi w/4 psi Check (28 - 105 bar w/ 0,3 bar Check), 1000 psi (70 bar) Standard Setting		
	<b>H</b> 1000 - 4000 psi w/25 psi Check (70 - 280 bar w/ 1,7 bar Check), 3000 psi (210 bar) Standard Setting			

**PRIMARY CARTRIDGE (A)**

<b>A</b>	3:1 (with CBEA primary cartridge, 3:1 pilot ratio, standard capacity counterbalance valve)
<b>H</b>	10:1 (with CBEHX primary cartridge, )
<b>G</b>	4.5:1 (with CBEGX primary cartridge, Fixed setting, 4.5:1 pilot ratio, standard capacity counterbalance valve)
<b>A</b>	3:1 (with CBEAX primary cartridge, Fixed setting, 3:1 pilot ratio, standard capacity counterbalance valve)
<b>H</b>	10:1 (with CBEH primary cartridge, 10:1 pilot ratio, standard capacity counterbalance valve)
<b>G</b>	4.5:1 (with CBEG primary cartridge, 4.5:1 pilot ratio, standard capacity counterbalance valve)