

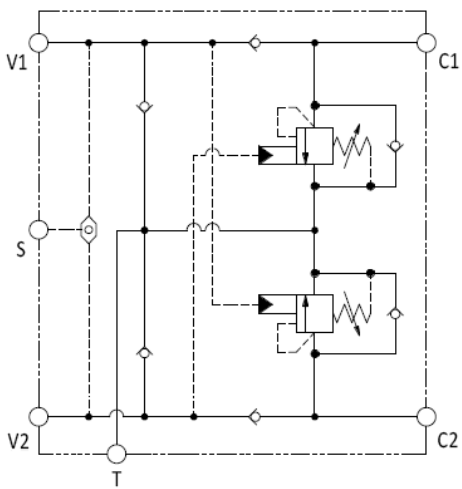
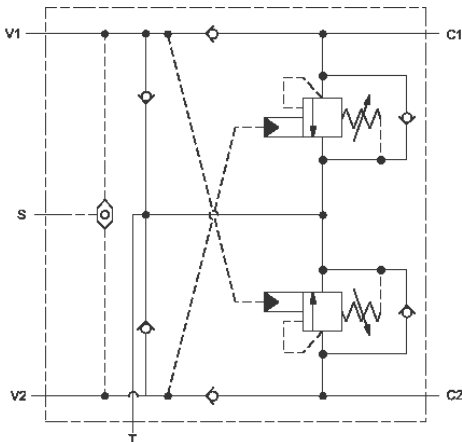


sunhydraulics.com/model/YCGG

This valve assembly provides overrunning load-control and load-port relief protection and includes a load sense shuttle for brake release. Connecting the T port is optional and will supply make-up oil and may flush hot dirty oil out of the actuator. Oil coming out of the actuator may return to tank through either port T or the directional valve.

TECHNICAL DATA

Body Type	Line mount
Mounting Hole Diameter	.53 in.
Mounting Hole Depth	Through
Mounting Hole Quantity	2



CONFIGURATION

NOTES:

Control
Functional Setting Range
Seal Material
Pilot Ratio (4th Letter) of Primary Cartridge
Port and Material Designation

- **Important:** Carefully consider the maximum system pressure. The pressure rating of the manifold is dependent on the manifold material, with the port type/size a secondary consideration. Manifolds constructed of aluminum are not rated for pressures higher than 3000 psi (210 bar), regardless of the port type/size specified.
- For detailed information regarding the cartridges contained in this assembly, click on the models codes shown in the Included Components tab.

CONFIGURATION OPTIONS

Model Code Example: **YCGGHNAN**

CONTROL	(L) FUNCTIONAL SETTING RANGE	(I) SEAL MATERIAL	(V)	
L Standard Screw Adjustment	I 400 - 1500 psi w/25 psi Check (28 - 105 bar w/ 1,7 bar Check), 1000 psi (70 bar) Standard Setting	V Viton		
C Tamper Resistant - Factory Set		N Buna-N		
		A 1000 - 4000 psi w/4 psi Check (70 - 280 bar w/ 0,3 bar Check), 3000 psi (210 bar) Standard Setting		
		B 400 - 1500 psi w/4 psi Check (28 - 105 bar w/ 0,3 bar Check), 1000 psi (70 bar) Standard Setting		
	H 1000 - 4000 psi w/25 psi Check (70 - 280 bar w/ 1,7 bar Check), 3000 psi (210 bar) Standard Setting			

PRIMARY CARTRIDGE

(A)

A 3:1 (with CBGA primary cartridge, 3:1 pilot ratio, standard capacity counterbalance valve)
H 10:1 (with CBGH primary cartridge, 10:1 pilot ratio, standard capacity counterbalance valve)
G 4.5:1 (with CBGG primary cartridge, 4.5:1 pilot ratio, standard capacity counterbalance valve)