

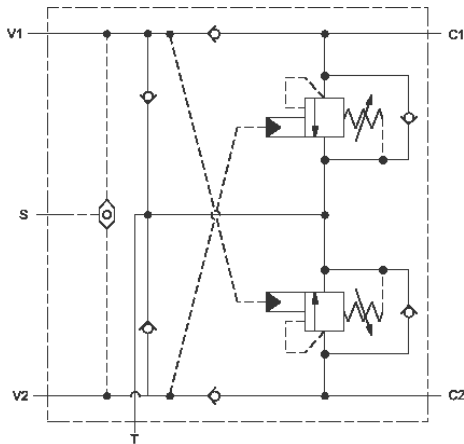


[sunhydraulics.com/model/YCGR](https://sunhydraulics.com/model/YCGR)

This valve assembly provides overrunning load-control, load-port relief protection, supplies make-up oil, and flushes hot dirty oil out of the actuator and includes a load sense shuttle for brake release. All oil coming out of the actuator returns to tank through port T.

### TECHNICAL DATA

|                        |            |
|------------------------|------------|
| Body Type              | Line mount |
| Mounting Hole Diameter | .53 in.    |
| Mounting Hole Depth    | Through    |
| Mounting Hole Quantity | 2          |



### CONFIGURATION

NOTES:

|   |
|---|
| Control                                       |
| Functional Setting Range                      |
| Seal Material                                 |
| Pilot Ratio (4th Letter) of Primary Cartridge |
| Port and Material Designation                 |

- **Important:** Carefully consider the maximum system pressure. The pressure rating of the manifold is dependent on the manifold material, with the port type/size a secondary consideration. Manifolds constructed of aluminum are not rated for pressures higher than 3000 psi (210 bar), regardless of the port type/size specified.
- For detailed information regarding the cartridges contained in this assembly, click on the models codes shown in the Included Components tab.

**CONFIGURATION OPTIONS**

Model Code Example: YCGRHNaN

| CONTROL                                 | (L) FUNCTIONAL SETTING RANGE   | (I) SEAL MATERIAL   | (V) |  |
|---|--|---|-----|--|
| <b>L</b> Standard Screw Adjustment      | <b>I</b> 400 - 1500 psi w/25 psi Check (28 - 105 bar w/ 1,7 bar Check), 1000 psi (70 bar) Standard Setting   | <b>V</b> Viton  |     |  |
| <b>C</b> Tamper Resistant - Factory Set |  | <b>N</b> Buna-N   |     |  |
|   |  | <b>A</b> 1000 - 4000 psi w/4 psi Check (70 - 280 bar w/ 0,3 bar Check), 3000 psi (210 bar) Standard Setting |     |  |
|   |  | <b>B</b> 400 - 1500 psi w/4 psi Check (28 - 105 bar w/ 0,3 bar Check), 1000 psi (70 bar) Standard Setting   |     |  |
|   | <b>H</b> 1000 - 4000 psi w/25 psi Check (70 - 280 bar w/ 1,7 bar Check), 3000 psi (210 bar) Standard Setting |   |     |  |

**PRIMARY CARTRIDGE**

(A)

|   |
|---|
| <b>A</b> 3:1 (with CBGA primary cartridge, 3:1 pilot ratio, standard capacity counterbalance valve)     |
| <b>H</b> 10:1 (with CBGH primary cartridge, 10:1 pilot ratio, standard capacity counterbalance valve)   |
| <b>G</b> 4.5:1 (with CBGG primary cartridge, 4.5:1 pilot ratio, standard capacity counterbalance valve) |